

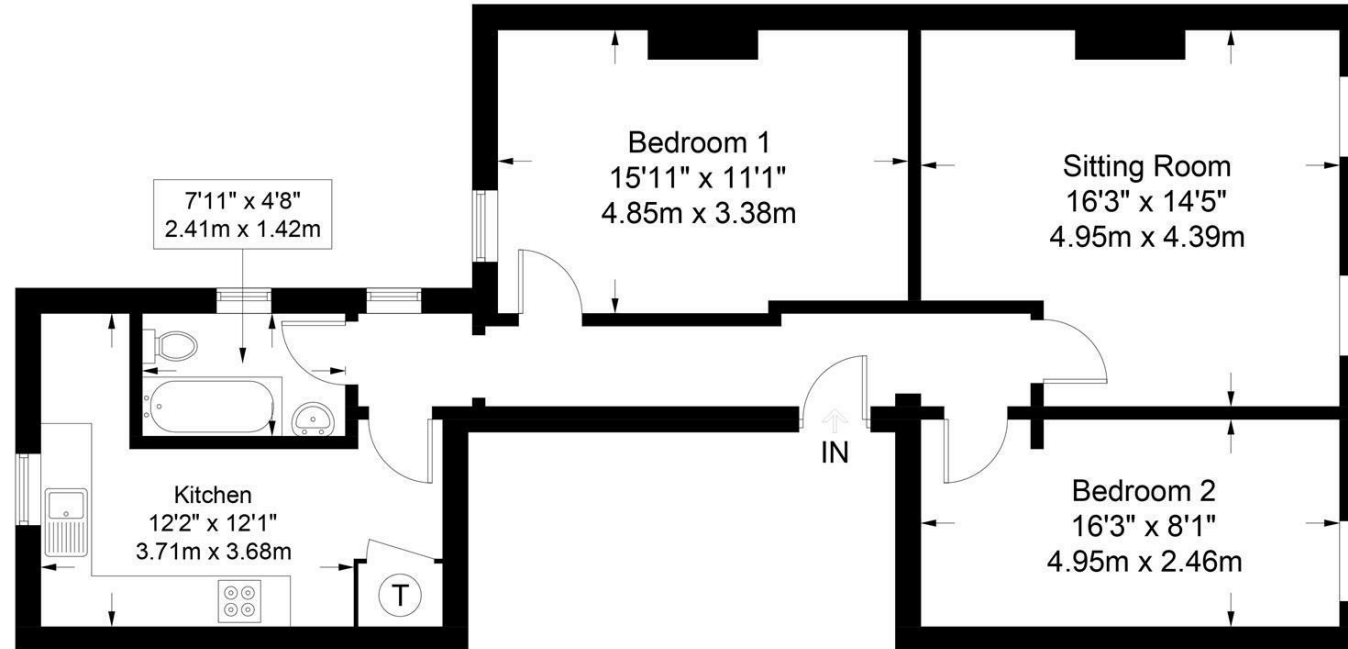
First Floor Flat

39 St. Georges Road Cheltenham Gloucestershire GL50 3DU

readmaurice 



SET IN THE CHARMING AREA OF CENTRAL CHELTENHAM AND WITHIN A SHORT WALK OF THE PROMENADE, THIS LARGE FIRST FLOOR FLAT OFFERS AMPLE ACCOMMODATION. IT HAS A FITTED KITCHEN, BATHROOM AND TWO BEDROOMS WITH GAS FIRED CENTRAL HEATING.



FIRST FLOOR



Approximate Gross Internal Area = 814 sq ft / 75.6 sq m

Illustration for identification purposes only, measurements are approximate and are not to scale.
Please check all details before making any decisions reliant upon them.
Copyright Read Maurice. (ID1269475)

ACCOMMODATION:

Entrance hall
Large living space
Kitchen
Two bedrooms
Bathroom

PARKING:

Permit parking - Cheltenham Westend Zone 12

ADDITIONAL:

Gas fired central heating
Sash single glazed windows
Unfurnished

INCLUDED:

Oven
Hob
Extractor hood

VIEWING AND SHOWING TIMES:

Read Maurice show our rental property during weekdays only. No application may be made without a physical viewing of the property. For certain properties block viewings will be offered and you are advised to attend at the earliest opportunity if this property is of interest to you.

General

Council Tax: C

EPC: Band D

Rating: 66

readmaurice 

48 Andover Road, Cheltenham, GL50 2TL

Tel: 01242 241122

Email: post@readmaurice.co.uk

www.readmaurice.co.uk

First Floor Flat 39 St. Georges Road Cheltenham Gloucestershire GL50 3DU

These particulars, whilst believed to be accurate are set out as a general outline only for guidance and do not constitute any part of an offer or contract. Intending purchasers should not rely on them as statements or representation of fact, but must satisfy themselves by inspection or otherwise as to their accuracy. We have not carried out a detailed survey nor tested the services, appliances and specific fittings. Room sizes should not be relied upon for carpets and furnishings. The measurements given are approximate. No person in this firm's employment has the authority to make or give any representation or warranty in respect of the property. Purchasers should not rely on room labels they are chosen by the floor planner and may not have the deemed planning consent for such use.