



For Sale Offers in the region of £475,000

Devonshire Road, Bathampton, Bath BA2 6UD

Attractive semi-detached bungalow in this sought-after location.

2 Beds | 2 Recepts | Gas CH | Double glazed | Driveway parking & Garage



Phone: 01225 443322 | Email: property@wildandlye.com



What we like

This is one of the most sought-after locations in the village with views towards Solsbury Hill. Built between 1930 and 1949, they enjoy typically large gardens for their age. All were built as bungalows and some are now greatly extended family homes. Lots of options with these properties and always popular.

Location

Bathampton is about 2 miles (3 km) east of Bath on the south bank of the River Avon. The Kennet and Avon Canal passes through the village and a toll bridge links Bathampton to Batheaston. It's a thriving village with an annual Flower Show, Primary School, two churches (Methodist and CofE), two gastro-pubs, Spar shop, café, dentist and doctors' surgery.

Tenure

Freehold

Council Tax

Band D

Arrange a viewing

01225 443322

www.wildandlye.com

Important Notice 1. Particulars: These particulars are not an offer or contract, nor part of one. You should not rely on statements by Wild & Lye in the particulars or by word of mouth or in writing ("information") as being factually accurate about the property, its condition or its value. Neither Wild & Lye nor any joint agent has any authority to make any representations about the property, and accordingly any information given is entirely without responsibility on the part of the agents, seller(s) or lessor(s). 2. Photos etc: The photographs show only certain parts of the property as they appeared at the time they were taken. Areas, measurements and distances given are approximate only. 3. Regulations etc: Any reference to alterations to, or use of, any part of the property does not mean that any necessary planning, building regulations or other consent has been obtained. A buyer or lessee must find out by inspection or in other ways that these matters have been properly dealt with and that all information is correct.



Ref: 2410

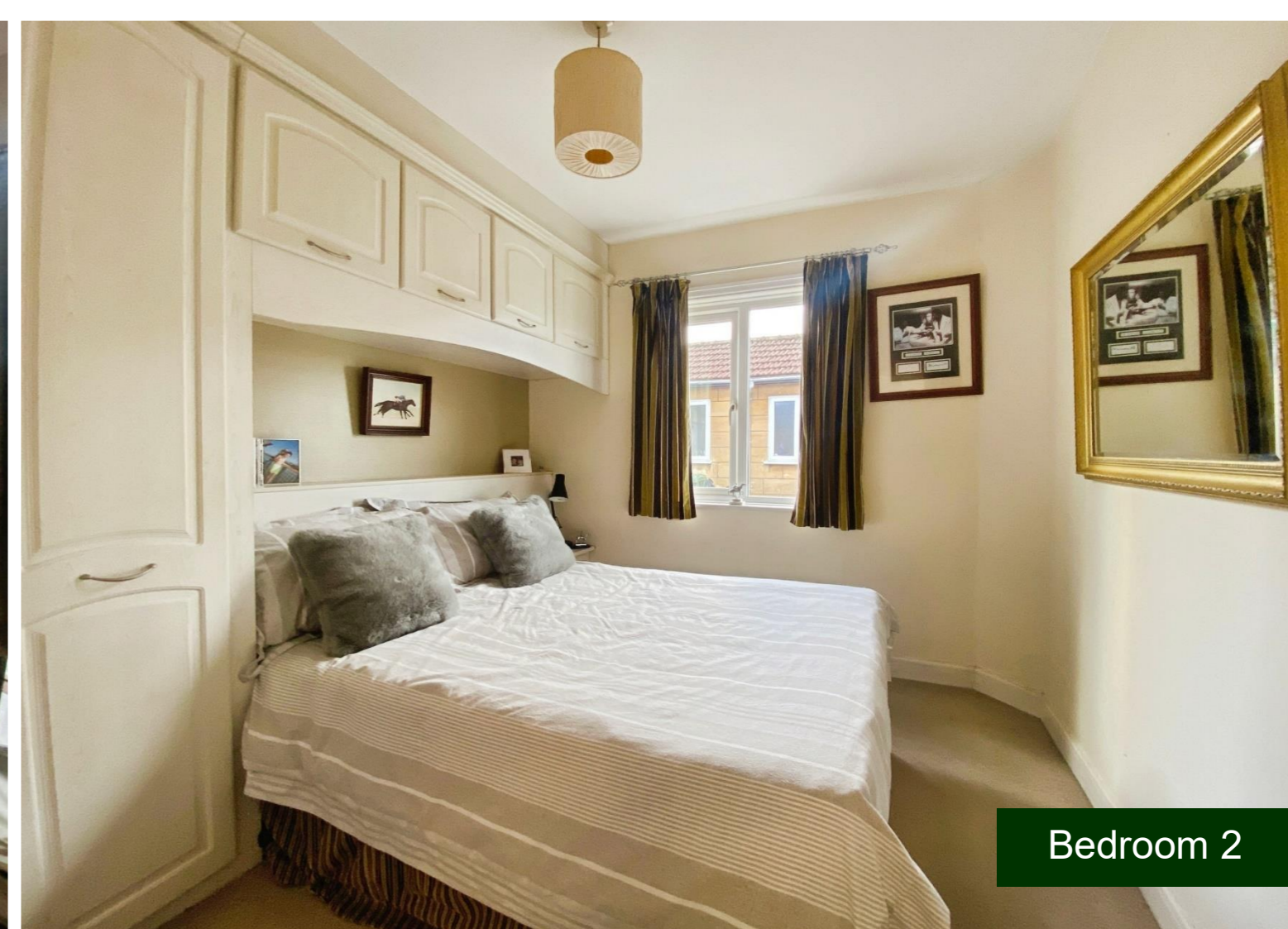
Floor area 63.4 sq.m. (682 sq.ft.)

Total floor area: 63.4 sq.m. (682 sq.ft.)

This floor plan is for illustrative purposes only. It is not drawn to scale. Any measurements, floor areas (including any total floor area), openings and orientations are approximate. No details are guaranteed, they cannot be relied upon for any purpose and do not form any part of any agreement. No liability is taken for any error, omission or misstatement. A party must rely upon its own inspection(s). Powered by www.Propertybox.io



Bedroom 1



Bedroom 2



Rear



Rear