



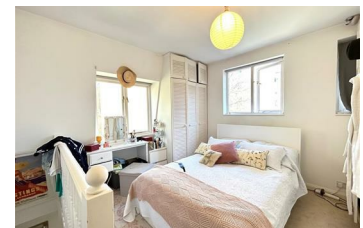
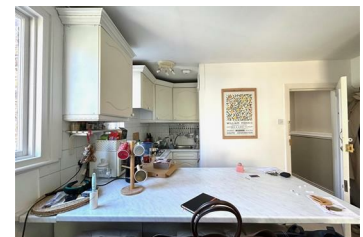
## Wetherby Place, Kensington, SW7

**£2,200 Per Month**

Bright and well presented one bedroom flat situated on the second & third floor located in the heart of Kensington area.

This property comprises a built-in entrance storage space, bright reception, an open plan kitchen, spacious bedroom and a bathroom.

Wetherby Place is ideally located just minutes from both Gloucester Road and South Kensington tube stations.



- Fantastic location
- Split level
- Ample natural lights
- Bright reception
- Spacious bedroom
- Close to many amenities
- Open plan kitchen
- Good size bathroom
- 3 mins from Gloucester Road station
- 10 mins from South Kensington station

Energy Efficiency Rating		Environmental Impact (CO <sub>2</sub> ) Rating	
Current	Potential	Current	Potential
A	A	B	B
B	B	C	C
C	C	D	D
D	D	E	E
E	E	F	F
F	F	G	G
G	G		

England & Wales 2008/1/EC