



110 Moor View Road, Sheffield, S8 0HJ



# 110 Moor View Road

Guide Price

## £280,000

GUIDE PRICE £280,000 - £300,000

Situated in the ever-popular residential area of Sheffield S8 is this well-proportioned three-bedroom link-detached home, offering fantastic potential for a new owner to create a wonderful long-term family property.

The accommodation briefly comprises a welcoming entrance hallway, a bright and spacious open-plan living and dining area creating an ideal space for relaxing and entertaining, and a separate fitted kitchen with access to the rear garden. To the first floor are two generously sized double bedrooms, a comfortable single bedroom, and a family bathroom.

Externally, the property benefits from off-road parking to the front and a charming rear garden featuring a patio seating area alongside a variety of established plants and greenery, providing a pleasant outdoor space to enjoy throughout the year.

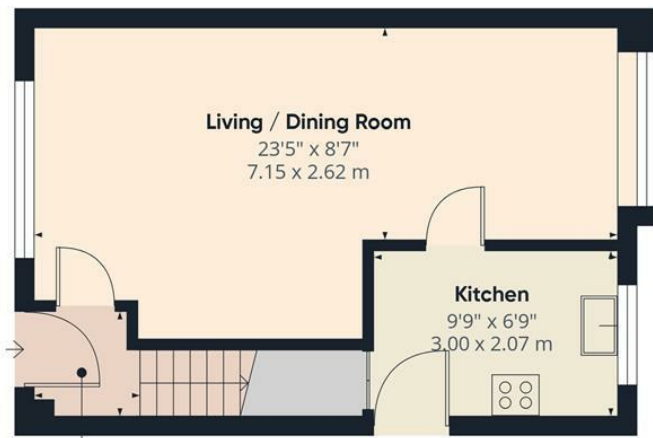
Conveniently located close to a range of local amenities, reputable schools, parks, and transport links into Sheffield City Centre, this home is perfectly positioned for a variety of buyers.

Early viewing is highly recommended to appreciate the space and opportunity on offer.

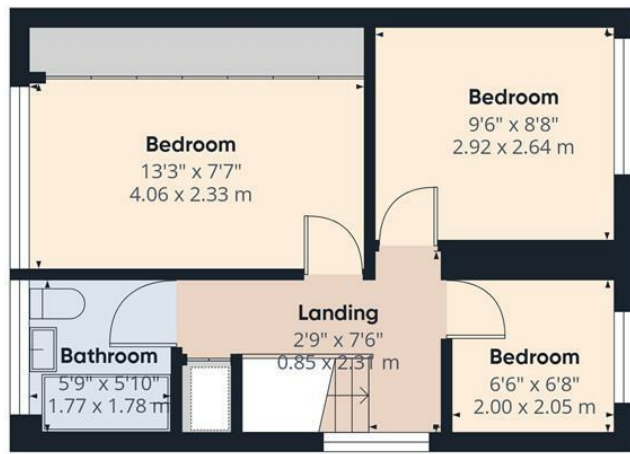
- Spacious three-bedroom link-detached home
- Bright open-plan living and dining area
- Two generous double bedrooms
- Versatile third single bedroom/home office
- Separate fitted kitchen
- Driveway providing off-road parking
- Attractive rear garden with patio seating area
- Popular and well-connected S8 location
- Close to a range of local shops, cafés and amenities
- Well placed for reputable schools and transport links







**Approximate total area<sup>m</sup>**  
713 ft<sup>2</sup>  
66.4 m<sup>2</sup>



Floor 1

(1) Excluding balconies and terraces

Calculations reference the RICS IPMS 3C standard. Measurements are approximate and not to scale. This floor plan is intended for illustration only.

GIRAFFE360

While we endeavour to make our sales particulars fair, accurate and reliable, they are only a general guide to the property and, accordingly, if there is any point, which is of particular importance to you, please contact the relevant office. The Agents have not tested any apparatus, equipment, fittings or services and so cannot verify they are in working order. The buyer is advised to obtain verification. Please note all the measurement details are approximate and should not be relied upon as exact. All plans, floor plans and maps are for guidance purposes only and are not to scale. Under no circumstances should they be relied upon as exact or for use in planning carpets and other such fixtures, fittings or furnishings. YOUR HOME IS AT RISK IF YOU DO NOT KEEP UP REPAYMENTS ON A MORTGAGE OR OTHER LOAN SECURED ON IT. 'A Life Assurance policy may be requested.' 'Written Quotations of credit terms available on request.'

Banner Cross  
T: 0114 268 3241  
E: [bannercross@saxtonmee.co.uk](mailto:bannercross@saxtonmee.co.uk)  
[www.saxtonmee.co.uk](http://www.saxtonmee.co.uk)

Hathersage  
T: 01433 650009  
E: [hathersage@saxtonmee.co.uk](mailto:hathersage@saxtonmee.co.uk)

Bakewell  
T: 01629 815307  
E: [bakewell@saxtonmee.co.uk](mailto:bakewell@saxtonmee.co.uk)

Matlock  
T: 01629 828250  
E: [matlock@saxtonmee.co.uk](mailto:matlock@saxtonmee.co.uk)

