



Millacres, Ware SG12 9PU

Guide price £325,000

Taylor Phelps

Estate Agency



2



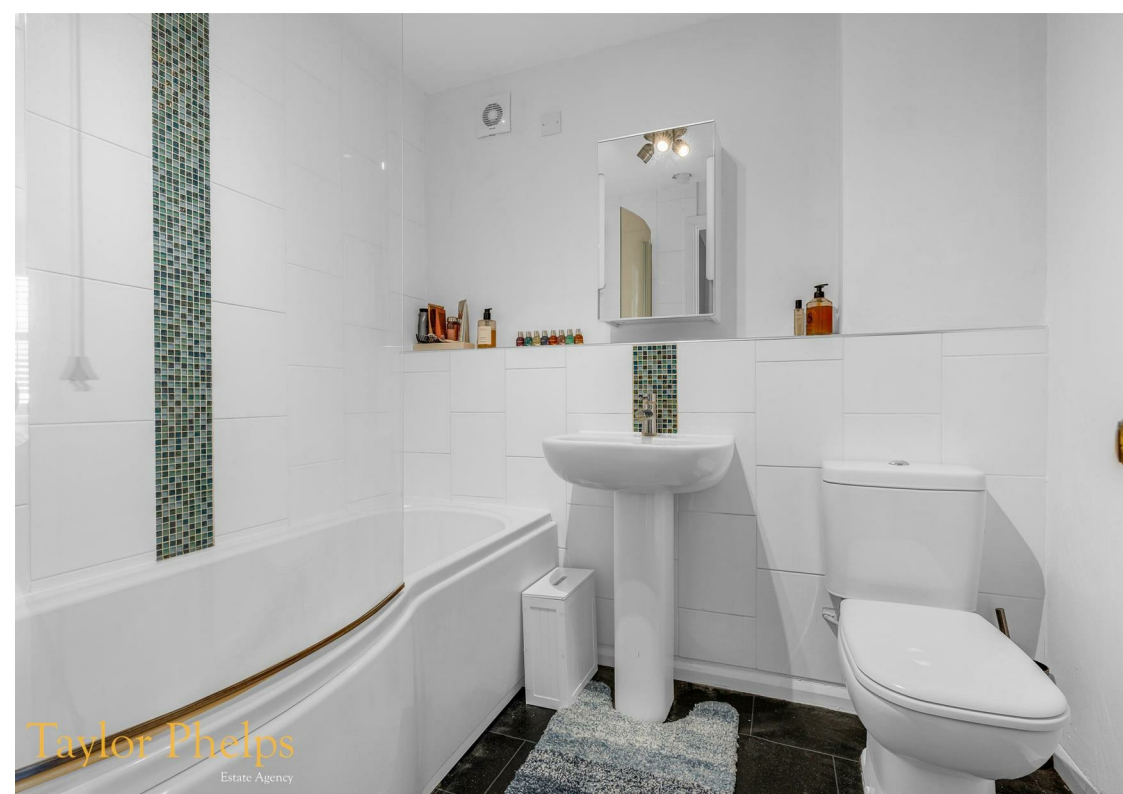
1

Taylor Phelps

Estate Agency

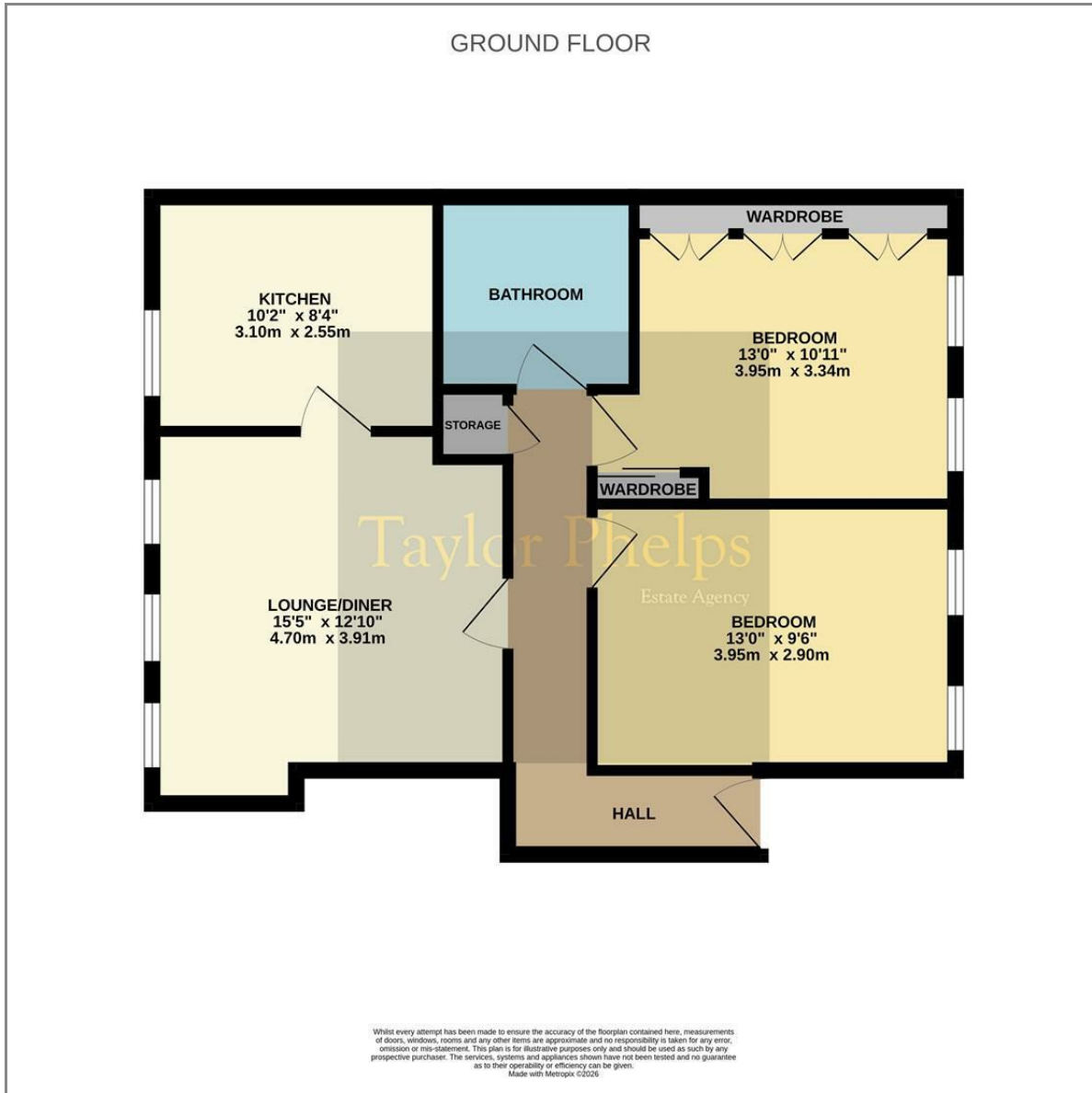
Taylor Phelps are pleased to offer this superb two bedroom ground floor apartment positioned within this highly regarded gated development in Ware town centre close to Ware train station which serves both Hertford East and London Liverpool Street! This fantastic apartment benefits from its own entrance door a good size living room and a high spec refitted kitchen and bathroom. Both bedrooms are doubles with the principle room benefitting from bespoke fitted wardrobes. Externally there is parking for both residents and visitors and the added benefit of EV charging points.



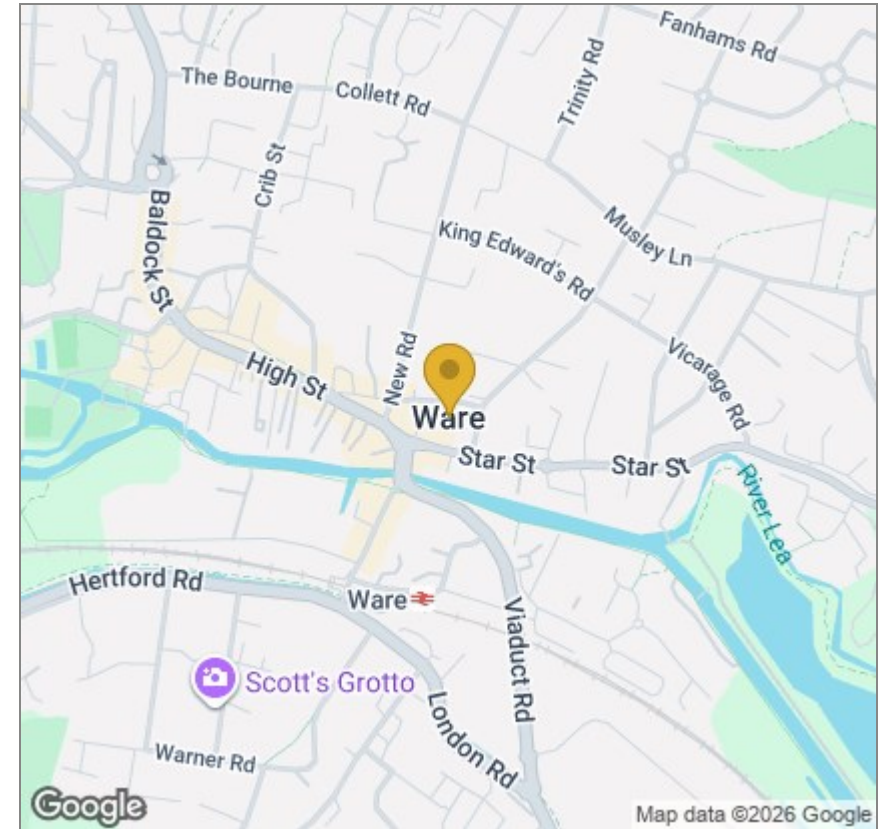




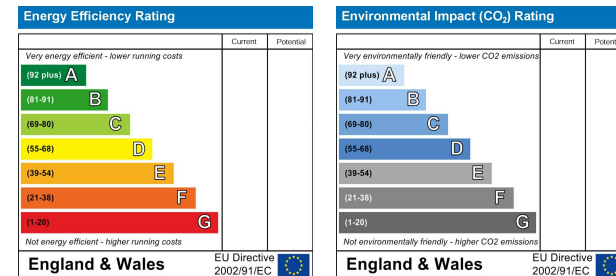
Floor Plan



Area Map



Energy Efficiency Graph



These particulars, whilst believed to be accurate are set out as a general outline only for guidance and do not constitute any part of an offer or contract. Intending purchasers should not rely on them as statements of representation of fact, but must satisfy themselves by inspection or otherwise as to their accuracy. No person in this firm's employment has the authority to make or give any representation or warranty in respect of the property.

01920 459000

hello@taylorphelps.co.uk

5 Frenchs Yard, Amwell End, Ware, Hertfordshire, SG12 9HP

www.taylorphelps.co.uk

