



Jordan fishwick

DIDSBURY VILLAGE
Sandhurst House



Sandhurst House, Didsbury Village, M20 2HW

Offers In Excess Of £350,000



The Property

A superb first floor apartment forming part of the exclusive St James Park development by PJ Livesey, enjoying a high level of presentation throughout and a great location close to the heart of Didsbury village. 729 sq ft. A bright and spacious living / dining room with wonderful sash windows opens to the bespoke breakfast kitchen which is finished with a complete range of integrated appliances striking the perfect balance between contemporary design and practicality. There is an extremely generous master bedroom with fitted wardrobes to one wall and additional mezzanine storage, luxury family bathroom with useful storage areas off the main hall and a private lobby with cloaks space. In addition, there are most impressive communal areas with a sweeping staircase and lift access to all floors, landscaped grounds & gardens and allocated residents parking. The development combines the opportunity to live within a short stroll of the vibrant and eclectic shops, restaurants and bars of Didsbury Village, whilst offering outstanding commuter links to the city, airport and countryside beyond.

Directions

M20 2HW



- Exclusive development
- High specification throughout
- 729 sq ft of accommodation
- Living room with large sash windows
- Fully integrated bespoke kitchen
- Spacious bedroom
- Fitted wardrobes
- Luxury bathroom
- Allocated parking
- Council Tax Band - D / EPC Rating - B

Postcode - M20 2HW

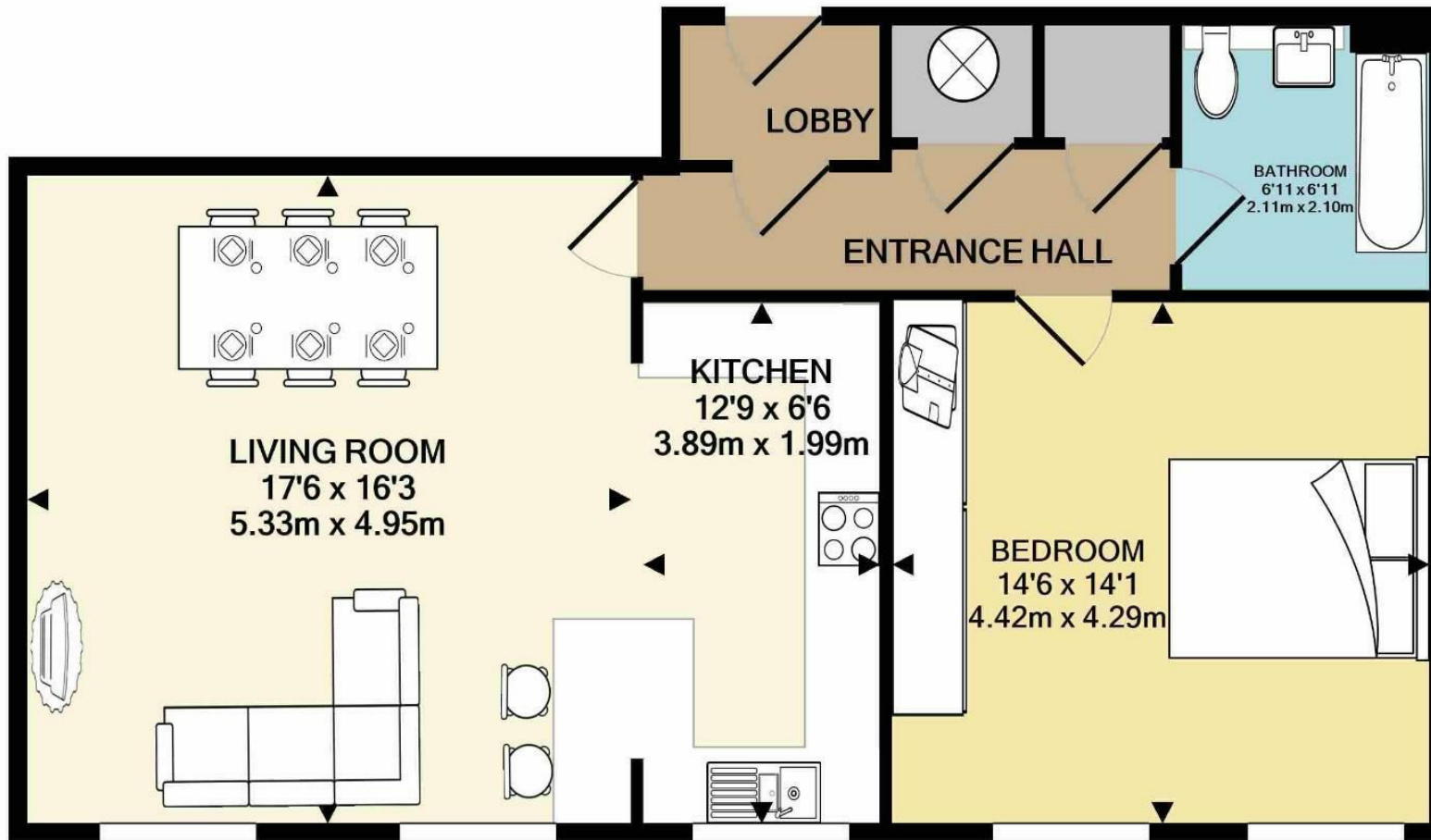
EPC Rating - B

Floor Area - 729.00 sq ft

Local Authority - Manchester City Council

Council Tax - D





TOTAL APPROX. FLOOR AREA 729 SQ.FT. (67.7 SQ.M.)

Measurements are approximate. Not to scale. Illustrative purposes only
 Made with Metropix ©2022



These particulars are believed to be accurate but they are not guaranteed and do not form a contract. Neither Jordan Fishwick nor the vendor or lessor accept any responsibility in respect of these particulars, which are not intended to be statements or representations of fact and any intending purchaser or lessee must satisfy himself by inspection or otherwise as to the correctness of each of the statements contained in these particulars. Any floorplans on this brochure are for illustrative purposes only and are not necessarily to scale.

Offices also at: Wilmslow, Macclesfield, Hale, Sale, Chorlton, Glossop, Manchester & Salford

757-759 Wilmslow Road, Didsbury Village, Manchester

0161 445 4480

didsbury@jordanfishwick.co.uk
 www.jordanfishwick.co.uk