

£335,000

23 Braemar Road

Bridgemary, Gosport, Hampshire, PO13 0XY

Beautifully presented, this charming two-bedroom chalet-style semi-detached bungalow offers spacious and versatile accommodation throughout. The property features two generous reception rooms, along with two well proportioned bedrooms with the principal further benefiting from an en-suite shower room. Externally, the home enjoys a westerly-facing rear garden, perfect for making the most of the afternoon and evening sun. There is also potential to create off-road parking in the future.

Early viewing is highly recommended to fully appreciate all that this delightful home has to offer. Please contact the Jeffries & Dibbens Gosport team to arrange your internal viewing – our phone lines are open until 8pm.

2 

2 

2 





ENTRANCE HALL

LOUNGE 16' 11" x 16' 8" (5.16m x 5.10m) maximum measurements

DINING ROOM 14' 4" x 9' 3" (4.38m x 2.84m)

KITCHEN 16' 3" x 8' 4" (4.96m x 2.55m)

BATHROOM

FIRST FLOOR LANDING

MASTER BEDROOM 13' 0" x 10' 11" (3.97m x 3.34m)

EN-SUITE SHOWER ROOM

BEDROOM TWO 13' 3" x 9' 2" (4.04m x 2.81m) maximum measurements

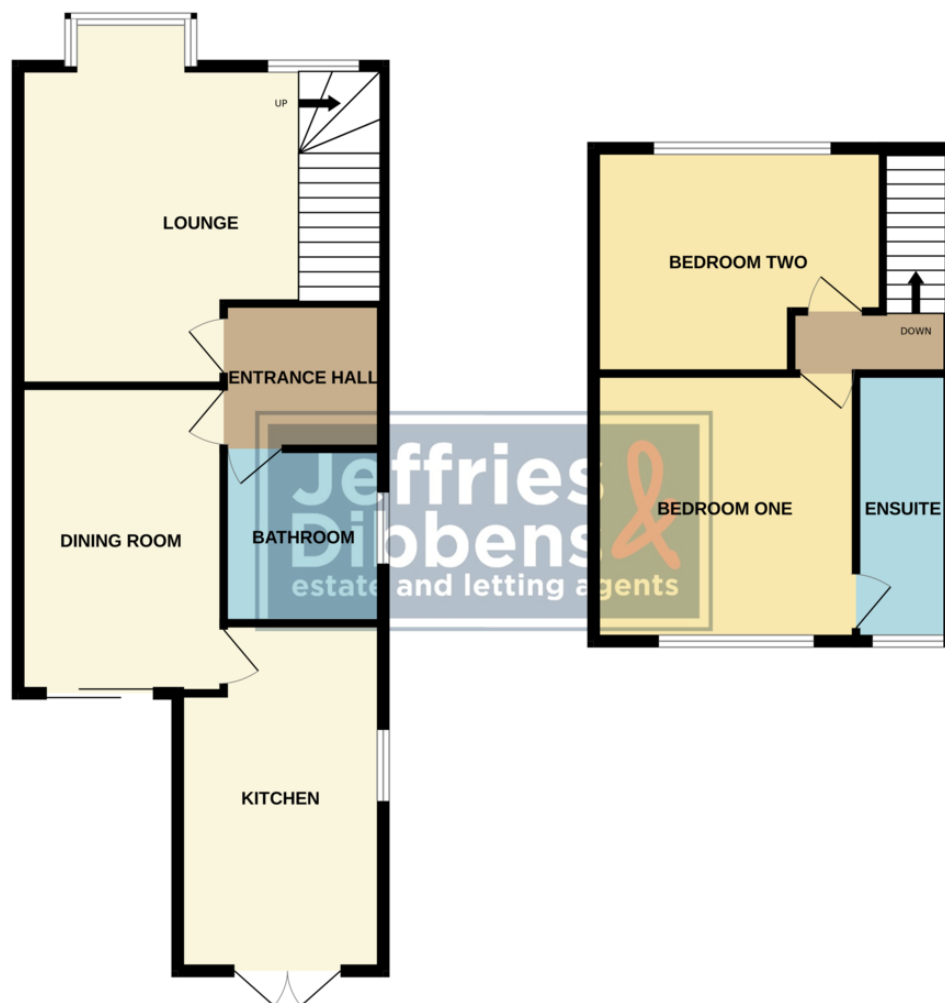
OUTSIDE

REAR ENCLOSED GARDEN



GROUND FLOOR

1ST FLOOR



LOCAL AUTHORITY
Gosport Borough Council

TENURE
Freehold

COUNCIL TAX BAND
Band C

VIEWINGS
By prior appointment only

EPC Awaited

Agents Note: Whilst every care has been taken to prepare these particulars, they are for guidance purposes only. All measurements are approximate and are for general guidance purposes only and whilst every care has been taken to ensure their accuracy, they should not be relied upon and potential buyers/tenants are advised to recheck the measurements.

As part of our legal obligations under the **Money Laundering, Terrorist Financing and Transfer of Funds (Information on the Payer) Regulations 2017**, we are required to conduct an **electronic identity verification check** on all purchasers. Please note that this is **not a credit check** and will **not affect your credit history** in any way. Purchasers are required to make a one off payment of £24 inc VAT to facilitate this requirement.

**Jeffries
Dibbens**
estate and letting agents

OFFICE ADDRESS
126 High Street, Gosport,
Hampshire, PO12 1DU

CONTACT
02392 602 155
gosport@dibbensproperty.co.uk
www.jdea.co.uk