



Connells

All Saints Road
Weymouth



Property Description

A beautifully presented 3 double bedroom terrace house in the popular and sought after location in Wyke Regis. Before entering the property, you are met by a lovely elevated landscaped front garden predominantly laid to patio. This lovely family home is arranged over three floors. The ground floor consists of a stylish separate living room and a spacious kitchen/diner with ample eye and base level cupboards and worktops and an external door giving access the enclosed rear garden. The first floor offers 2 double bedrooms and the well appointed family shower room. Stairs further rise to the top floor master bedroom with its an ensuite shower room.

Entrance

Hallway

Wooden style flooring. Understairs storage cupboard. Wall mounted radiator. Dado railing. Skirt boarding. Power points. Stairs rise to the first floor. Door leading into: -

Living Room

14' 11" x 10' 9" (4.55m x 3.28m)

Feature front aspect double glazed bay window, enjoying views towards All Saints Church. Carpeted. Wall mounted radiator. Dado railing. Skirt boarding. Power points. Feature fireplace and chimney recess.

Kitchen/Dining Room

16' 8" x 12' (5.08m x 3.66m)

Open plan kitchen diner with ample worktop space, eye and base level cupboards, 5 ring gas hob, low level oven, single sink with drainer and mixer tap, breakfast bar, designated spaces for domestic appliances, utility cupboard and external rear door. Rear aspect double glazed window. Vertical chrome heated towel rail. Extractor fan. Coving. Tiled flooring. Brushed chrome power points.

First Floor

Landing

Carpeted. Dado railing. Skirt boarding. Under stairs storage. Feature front aspect double glazed window, enjoying views towards All Saints Church. Stairs rise to the second floor. Door leading into: -

Bedroom Two

14' 10" x 10' 10" (4.52m x 3.30m)

Feature front aspect double glazed bay window, enjoying views towards All Saints Church. Carpeted. Wall mounted radiator. Skirt boarding. Brushed chrome usb Power points. Coving. Chimney breast recess. Vertical wall mounted radiator.

Bedroom Three

11' 11" x 10' 11" (3.63m x 3.33m)

Rear aspect double glazed window. Carpeted. Skirt boarding. Power points. Television point. Coving. Vertical wall mounted radiator.

Shower Room

Fully tiled with large double shower, WC, hand wash basin, large vertical radiator and rear aspect window. Extractor fan. Coving.

Second Floor

Landing

Carpeted. Fire door leading into: -

Bedroom One

14' 9" x 12' (4.50m x 3.66m)

Spacious double bedroom with restricted head height, front aspect low level Velux window enjoying direct views toward All Saints Church. Eaves storage. Rear aspect double glazed window enjoying some sea views. Wooden style flooring. Wall mounted radiator. Power points. Television point,

En Suite

Single shower cubicle, WC, space-saver wash hand basin and rear aspect window. Extractor fan.

Outside

Front Garden

An elevated landscaped garden laid to a mixture of slab patio and tile, enjoying a picturesque setting in Old Wyke Village.

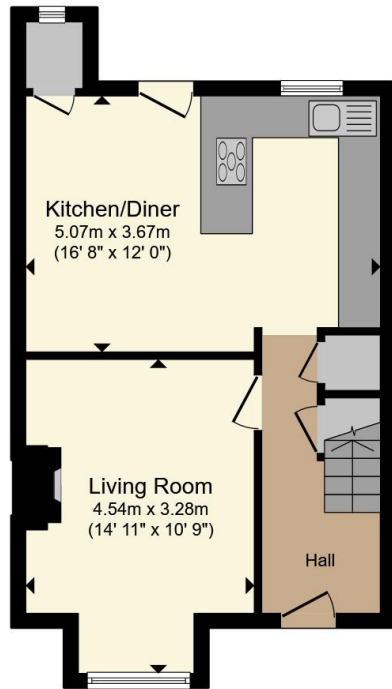
Westerly Rear Garden

Enclosed low maintenance courtyard garden laid to composite decking.

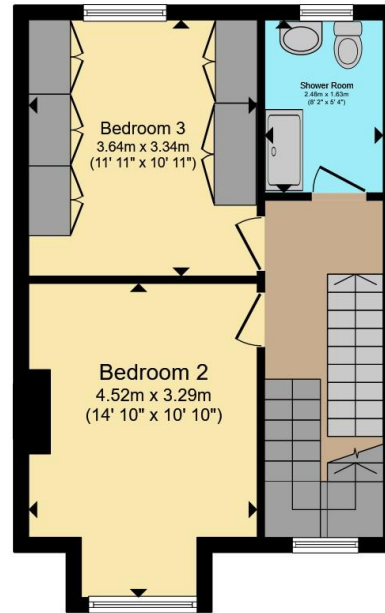




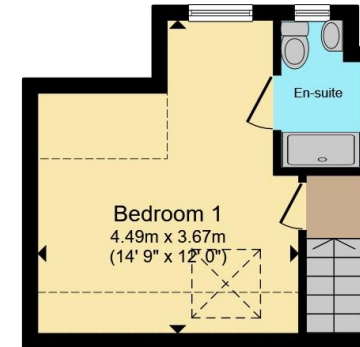




Ground Floor



First Floor



Second Floor

Total floor area 96.8 m² (1,042 sq.ft.) approx

This floor plan is for illustrative purposes only. It is not drawn to scale. Any measurements, floor areas (including any total floor area), openings and orientation are approximate. No details are guaranteed, they cannot be relied upon for any purpose and they do not form part of any agreement. No liability is taken for any error, omission or misstatement. A party must rely upon its own inspection(s). Powered by www.propertybox.io



To view this property please contact Connells on

T 01305 770 333
E weymouth@connells.co.uk

84 St. Thomas Street
WEYMOUTH DT4 8EN

EPC Rating: D Council Tax
Band: C

Tenure: Freehold

view this property online connells.co.uk/Property/WEY309753



1. MONEY LAUNDERING REGULATIONS Intending purchasers will be asked to produce identification documentation at a later stage and we would ask for your co-operation in order that there will be no delay in agreeing the sale. 2. These particulars do not constitute part or all of an offer or contract. 3. The measurements indicated are supplied for guidance only and as such must be considered incorrect. Potential buyers are advised to recheck measurements before committing to any expense. 4. We have not tested any apparatus, equipment, fixtures, fittings or services and it is in the buyers interest to check the working condition of any appliances.

Connells Residential is registered in England and Wales under company number 1489613, Registered Office is Cumbria House, 16-20 Hockliffe Street, Leighton Buzzard, Bedfordshire, LU7 1GN. VAT Registration Number is 500 2481 05.

See all our properties at www.connells.co.uk | www.rightmove.co.uk | www.zoopla.co.uk

Property Ref: WEY309753 - 0010