

## Mill Hill Road, W3

£425,000

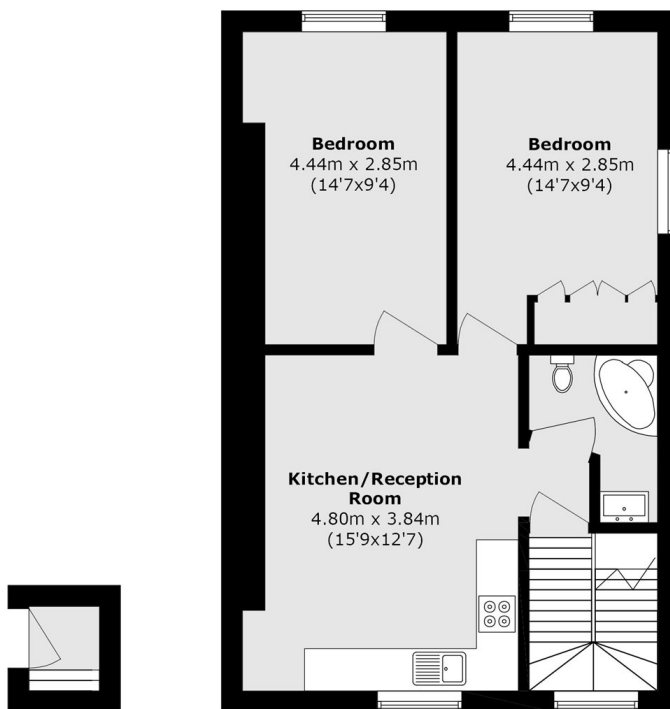
A top-floor period conversion within an imposing house in the Mill Hill Conservation Area. This lateral apartment has two good-sized bedrooms and an open-plan kitchen and living area which is filled with natural light. Mill Hill Road has a long lease and will be sold with no onward chain

Mill Hill Road is ideally located within half a mile of both Acton Town and South Acton stations as well as the shops and amenities of both Churchfield Road and Acton High Street.

### Features

- Two Bedroom
- End of Terrace
- Top Floor Flat
- No Onward Chain
- Mill Hill Conservation Area
- Long Lease

# Mill Hill Road, London, W3



**First Floor**

**Second Floor**

Total area (approx.): 56.4 sq. m (607.1 sq. ft)