



4 Wren Terrace, Innsworth, Gloucester, GL3 1BG
£300,000

Farr & Farr

Sales
Lettings 

4 Wren Terrace

Innsworth, Gloucester

A stylish and immaculately presented bungalow situated in a quiet cul-de-sac. This beautifully maintained three bedroom bungalow offers immaculate, move straight in accommodation finished to an exceptional standard throughout. Designed with both comfort and style in mind, the property provides bright, generously proportioned living spaces ideal for modern living. The property also benefits from brand new windows, installed less than a year ago and complete with the remainder of a 10 year warranty, offering added peace of mind.

Outside, the home continues to impress with a substantial rear garden, perfect for relaxing or entertaining, alongside ample off-road parking for multiple vehicles.

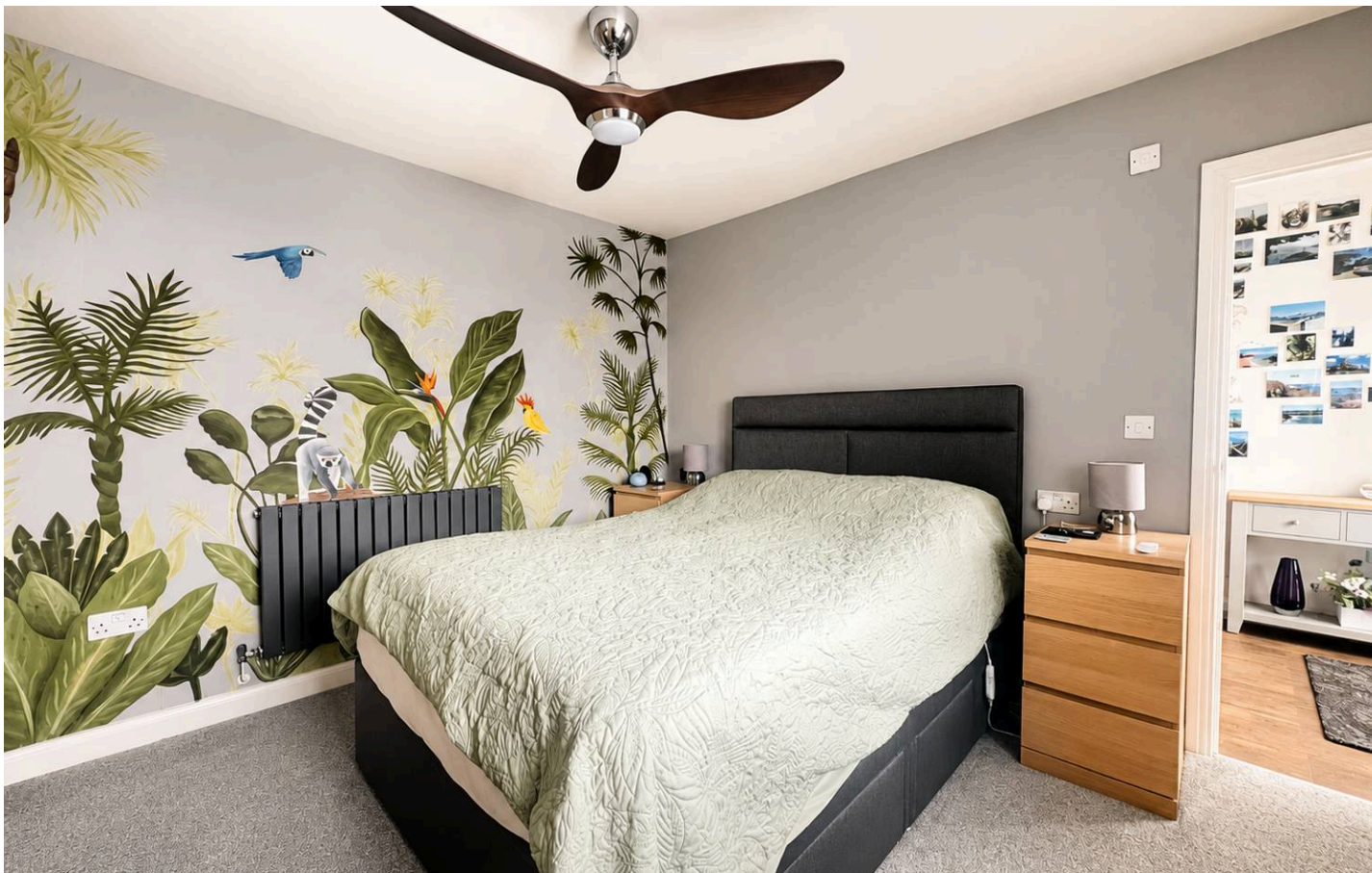
Council Tax band: A

Tenure: Freehold

EPC Energy Efficiency Rating: D

- IMMACULATELY PRESENTED BUNGALOW
- THREE GOOD SIZED BEDROOMS
- SITUATED IN A CUL-DE-SAC
- AMPLE OF ROAD PARKING
- ENCLOSED REAR GARDENS





Entrance

Accessed via double glazed front door. Radiator. Tiled floor. Small storage cupboard. Broadband point.

Bedroom

9' 8" x 11' 10" (2.94m x 3.60m)
Floor to ceiling fitted wardrobes with mirror. Double glazed window to front aspect. Ceiling fan. Radiator.

Bedroom 2

9' 5" x 12' 8" (2.86m x 3.85m)
Mirrored fitted wardrobes. Radiator. Double glazed window to rear aspect.

Bedroom 3

11' 10" x 9' 0" (3.61m x 2.75m)
Contemporary style radiator. Fitted wardrobe with mirror. Double glazed window to rear aspect.

Bathroom

7' 9" x 8' 0" (2.37m x 2.45m)
Large walk in shower with sliding doors. Panelled bath. Vanity unit wash hand basin with drawers below. Low level w.c. Double glazed windows. Storage cupboard. LED mirror. Tiled floor. Inset ceiling spotlights. Heated towel rail.

Living/dining room

11' 9" x 17' 10" (3.58m x 5.44m)
Double glazed window to front aspect. Electric featured fireplace. Two contemporary style radiators.

Kitchen

12' 9" x 10' 0" (3.89m x 3.05m)
Beautifully appointed and thoughtfully designed, this stylish fitted kitchen combines practicality with a sleek modern finish. Featuring an extensive range of shaker-style wall and base units, complemented by contrasting work surfaces and attractive tiled splashbacks. Ceramic sink and drainer. Five ring ceramic hob with extractor fan. Double oven. Plumbing for washing machine. Space for dishwasher. Double glazed window and door to garden.



REAR GARDEN

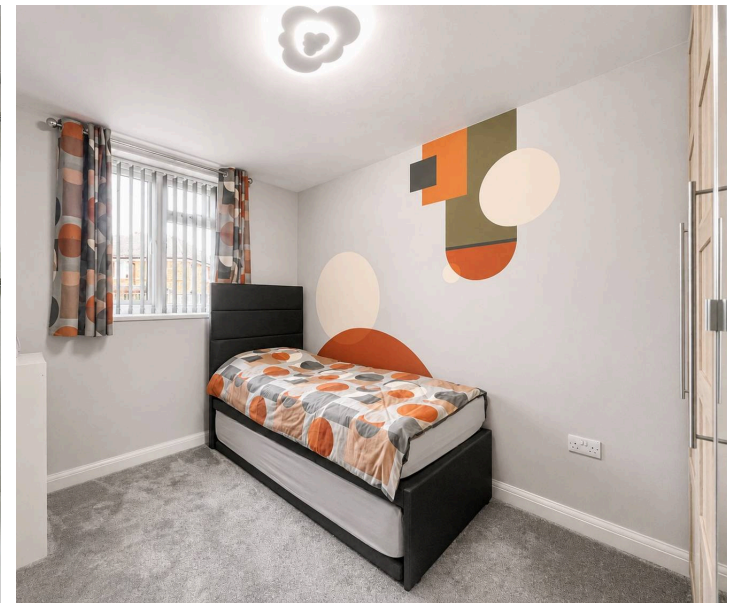
Predominantly laid to lawn, fully enclosed by fencing with outside tap and gated side access.

FRONT GARDEN

Boasting excellent kerb appeal, the property enjoys a generously sized frontage with an expansive stamped concrete driveway, providing ample off-road parking for several vehicles. Attractive low-maintenance gravel borders enhance the exterior, while enclosed boundaries and side access add both privacy and practicality.

DRIVEWAY

6 Parking Spaces



GROUND FLOOR



Whilst every attempt has been made to ensure the accuracy of the floorplan contained here, measurements of doors, windows, rooms and any other items are approximate and no responsibility is taken for any error, omission or mis-statement. This plan is for illustrative purposes only and should be used as such by any prospective purchaser. The services, systems and appliances shown have not been tested and no guarantee as to their operability or efficiency can be given.
Made with Metropix ©2026

Farr & Farr

125 Cheltenham Road, Gloucester - GL2 0JQ

01452380444 • longlevens@farrandfarr.co.uk •

Farr & Farr Sales Lettings 