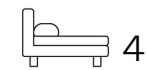




Living
made
better

Kildare Walk
London, E14 7DB



Asking Price £450,000

Kildare Walk, London, E14 7DB

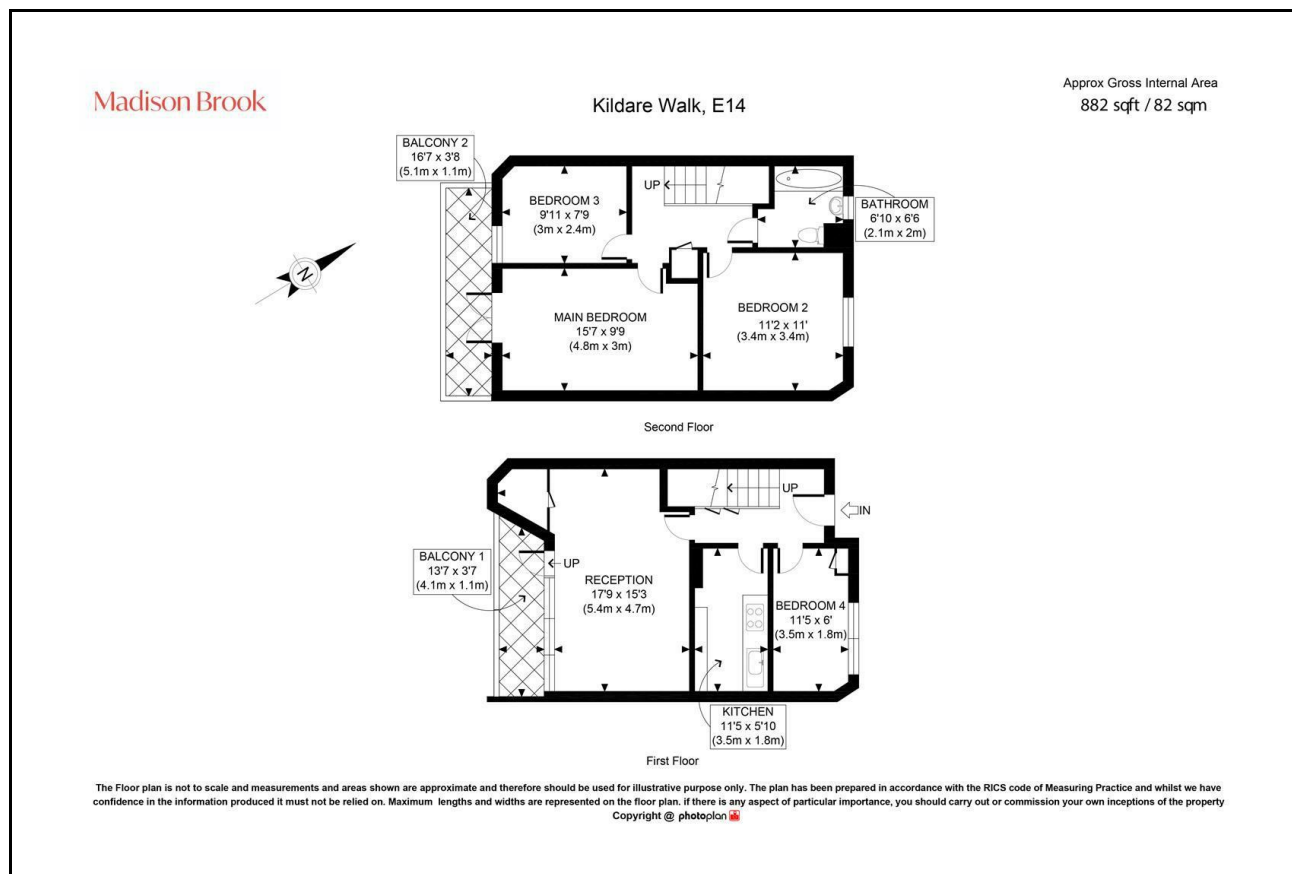
Madison Brook

Property Summary

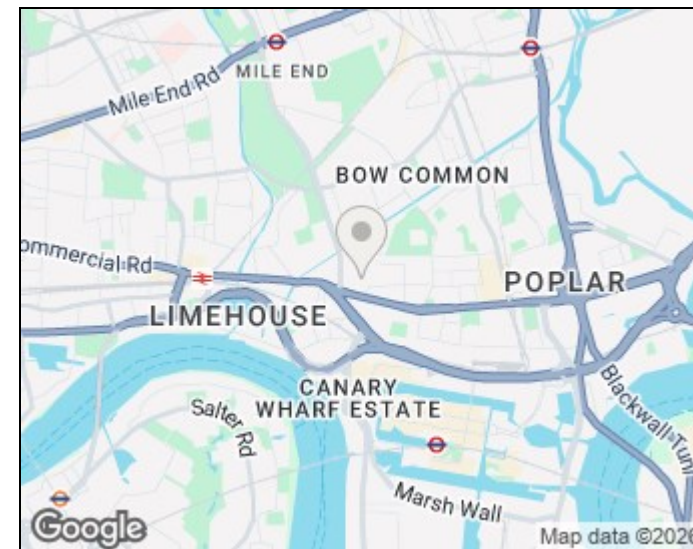
A well-presented four bedroom first and second floor maisonette offering 881 sq ft of living space and two private balconies. The property is offered chain free and ideally located close to Devons Road DLR, providing easy access to Canary Wharf, Stratford and the City.

Service Charge: £2,706.22 pa | Ground Rent: £10 pa | Lease Remaining: 87 years

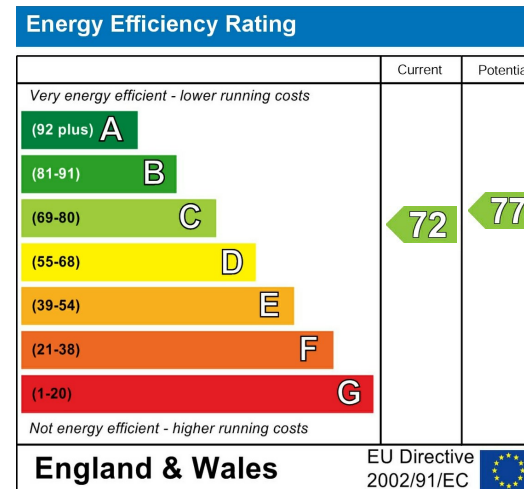
Floorplan



Area Map



Energy Efficiency Graph



These particulars, whilst believed to be accurate are set out as a general outline only for guidance and do not constitute any part of an offer or contract. Intending purchasers should not rely on them as statements of representation of fact, but must satisfy themselves by inspection or otherwise as to their accuracy. No person in this firm's employment has the authority to make or give any representation or warranty in respect of the property.

Unit B 20 Western Gateway, Royal Victoria
Dock, London, E16 1BS
Tel: 020 3946 6000 Email:
docklands@madisonbrook.com
<https://madisonbrook.com/>