



## BOWEN DRIVE, SE7

£450,000

Flat  
Two bedrooms  
One bathroom  
Second floor  
Balcony  
Energy rating: b

@marshandparsons  
marshandparsons.co.uk

MARSH &  
PARSONS



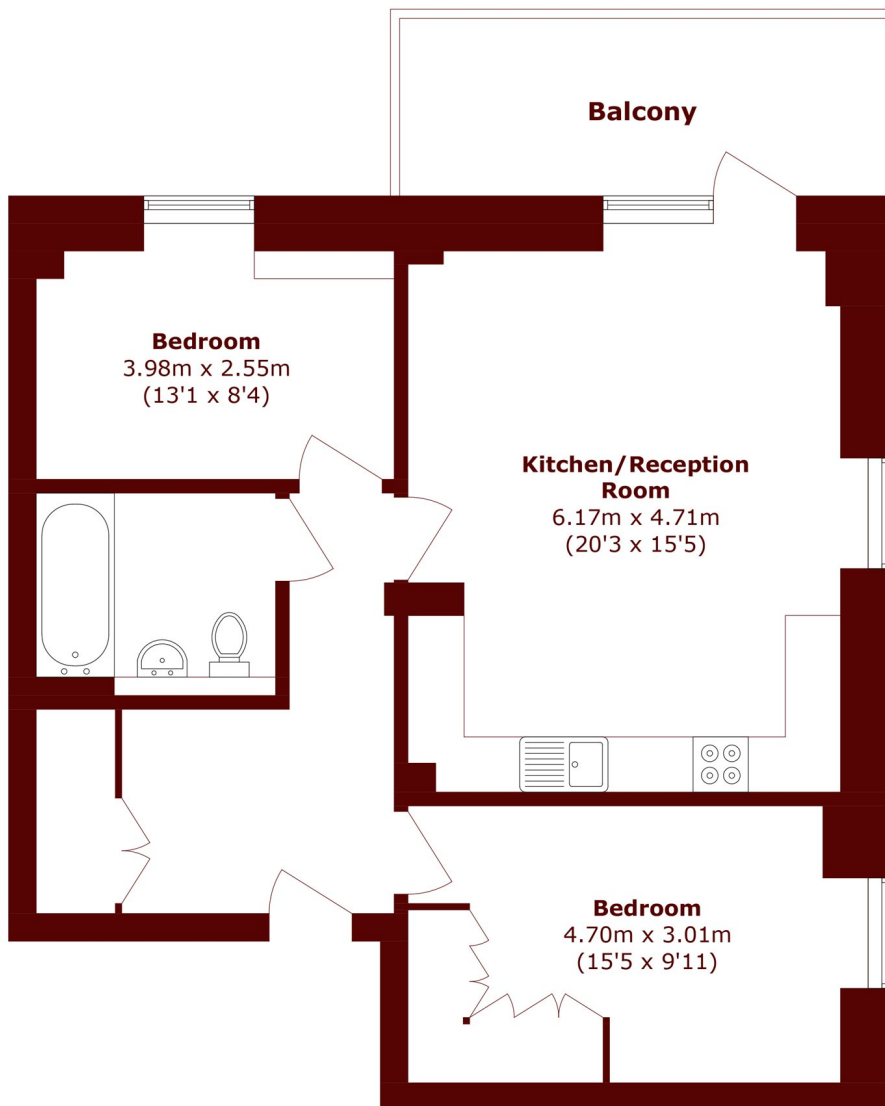
# ABOUT THE PROPERTY

Offers Over £450,000. This beautifully presented two bedroom, one bathroom second floor apartment is an ideal purchase for first-time buyers. Built just five years ago, the property offers modern, stylish living throughout. The apartment features two spacious double bedrooms and a bright, open plan kitchen and living area, which opens onto a private balcony.

Ideally located near Greenwich Shopping Park, the property offers excellent transport links. Westcombe Park and Charlton stations provide regular services to Central London, with London Bridge around 15 minutes away, while North Greenwich Underground station (Jubilee line) is just a 10 minute bus ride.



# STEP INSIDE BOWEN DRIVE



Total area (approx.): 77.0 sq. m (828.8 sq. ft)  
Balcony area (approx.): 10.2 sq. m (109.7 sq. ft)

**Charlton**  
020 8293 0454

Energy Rating: B We aim to make our particulars both accurate and reliable. However, they are not guaranteed; nor do they form part of an offer or contract. If you require clarification on any points then please contact us, especially if you're traveling some distance to view. Please note that appliances and heating systems have not been tested and therefore no warranties can be given as to their good working order

**MARSH &  
PARSONS**