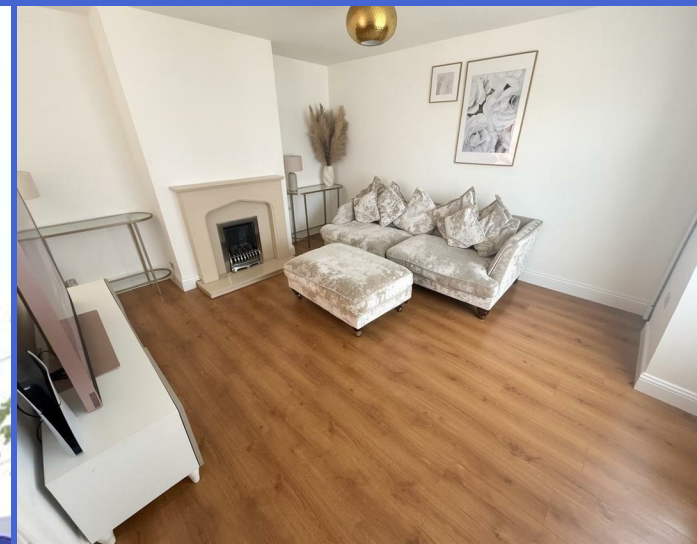




519 Leagrave High Street, Luton, LU4 0TH
£1,650 Per month



- PR Property Lettings
- Modern kitchen with dining area
- Ample off-road parking

- Available beginning of July
- Large private garden
- Close to local shops, schools, and amenities

- Three well-proportioned bedrooms
- Double glazing throughout
- Excellent transport links — Leagrave railway station nearby

Exclusive to PR Property — A fantastic opportunity to rent this well-presented three bedroom family home, ideally situated on Leagrave High Street, Luton. Boasting a large lounge, a modern kitchen diner, and a family bathroom, the property offers comfortable and practical living throughout. Outside, you'll find a generous garden — perfect for families or those who love their outdoor space — along with ample off-road parking. Gas central heating and double glazing throughout ensure year-round comfort and energy efficiency. Located in the popular north-west Luton, residents benefit from excellent local amenities, Luton & Dunstable Hospital near by, Leagrave Park, great schools, and superb transport links including Leagrave railway station with direct services to London.

ENTRANCE HALL

LOUNGE 13'4" X 12'2" (4.06M X 3.70M)

KITCHEN/DINING ROOM 9'2" X 18'6" (2.79M X 5.63M)

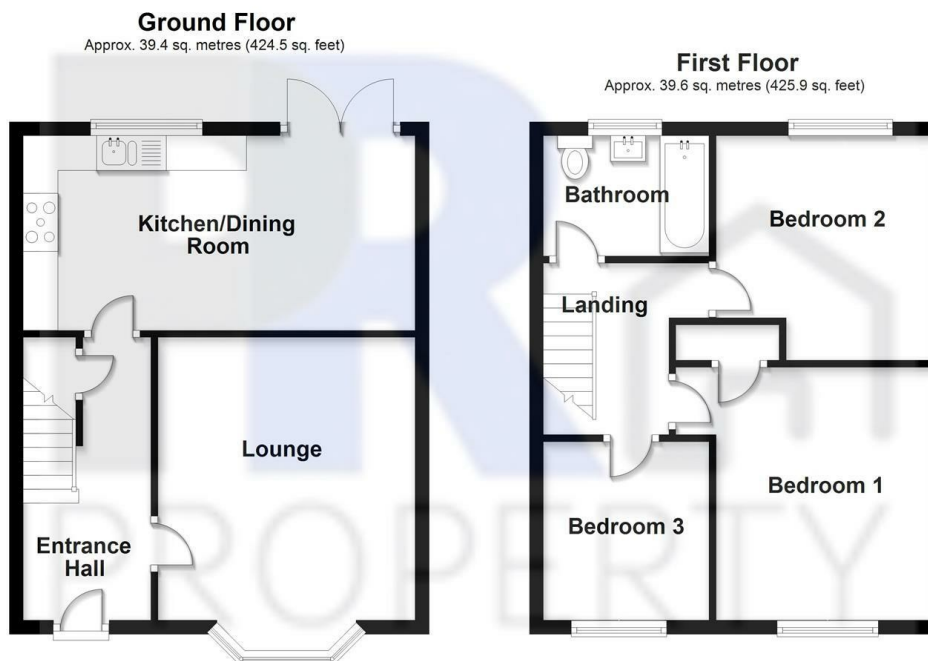
LANDING

BEDROOM 1 11'11" X 10'4" (3.63M X 3.15M)

BEDROOM 2 10'10" X 10'5" (3.30M X 3.18M)

BEDROOM 3 8'8" X 7'11" (2.64M X 2.41M)

BATHROOM



Total area: approx. 79.0 sq. metres (850.4 sq. feet)
519 Leagrave High Street

Energy Efficiency Rating		Current	Potential
Very energy efficient - lower running costs	(92 plus) A		
	(81-91) B		
	(69-80) C		
	(55-68) D		
	(39-54) E		
	(21-38) F		
Not energy efficient - higher running costs	(1-20) G		
		71	85
England & Wales		EU Directive 2002/91/EC	