



Brondesbury Road, NW6

£675,000

The property offers a bright open-plan reception with a contemporary kitchen, alongside two well proportioned double bedrooms with built-in storage. Presented in excellent condition throughout.

Conveniently located close to Queen's Park station (Bakerloo Line & Overground), the green open spaces of the park. The array of boutique shops, bars, and restaurants along Salusbury Road and Lonsdale Road makes this an especially popular location.

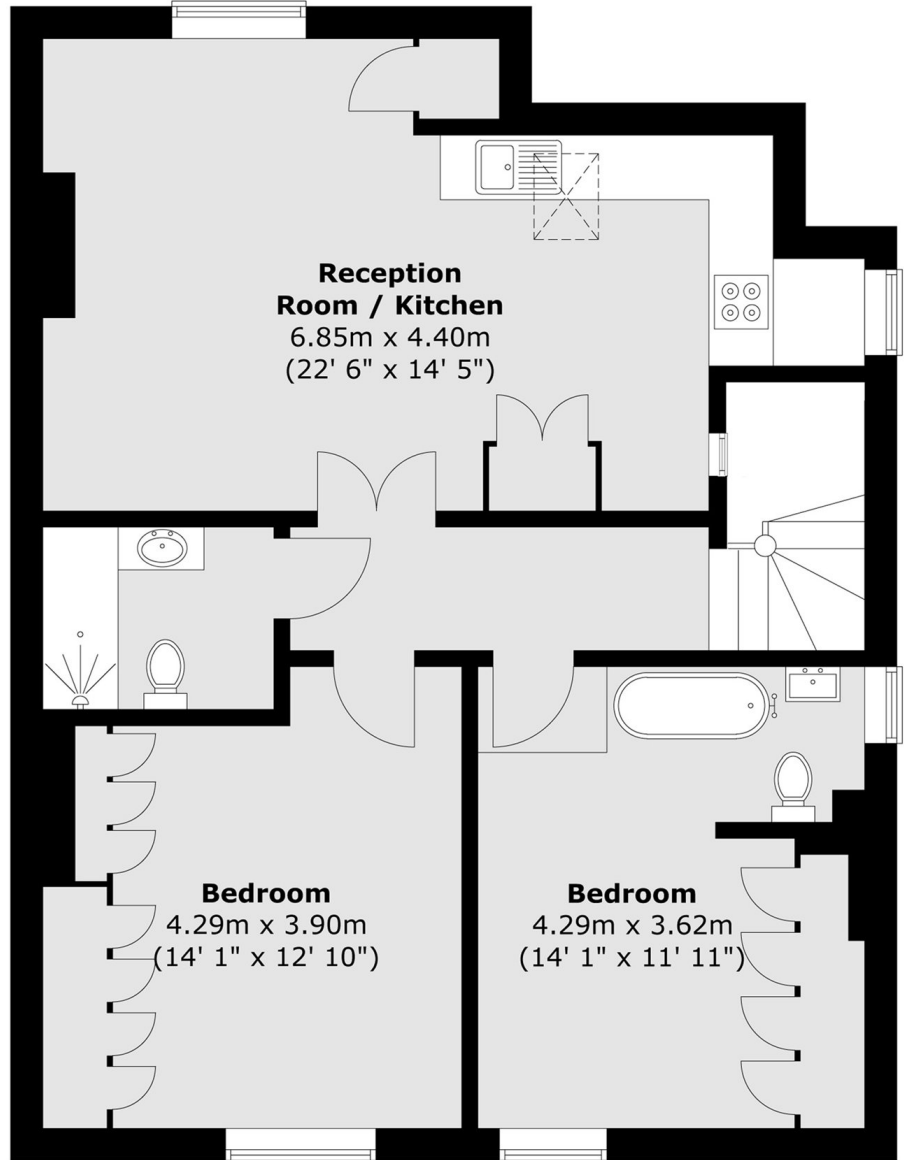
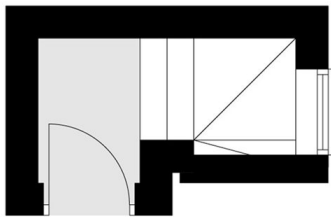
Features

- Two Bedrooms
- Top Floor Flat
- Excellent Condition
- Close to Transport Links
- Leasehold
- Chain Free

Brondesbury Road, London, NW6

Second Floor

First Floor



Total area (approx.) : 76.5 sq. m (823 sq. ft)