

## Amherst Road, W13

£475,000

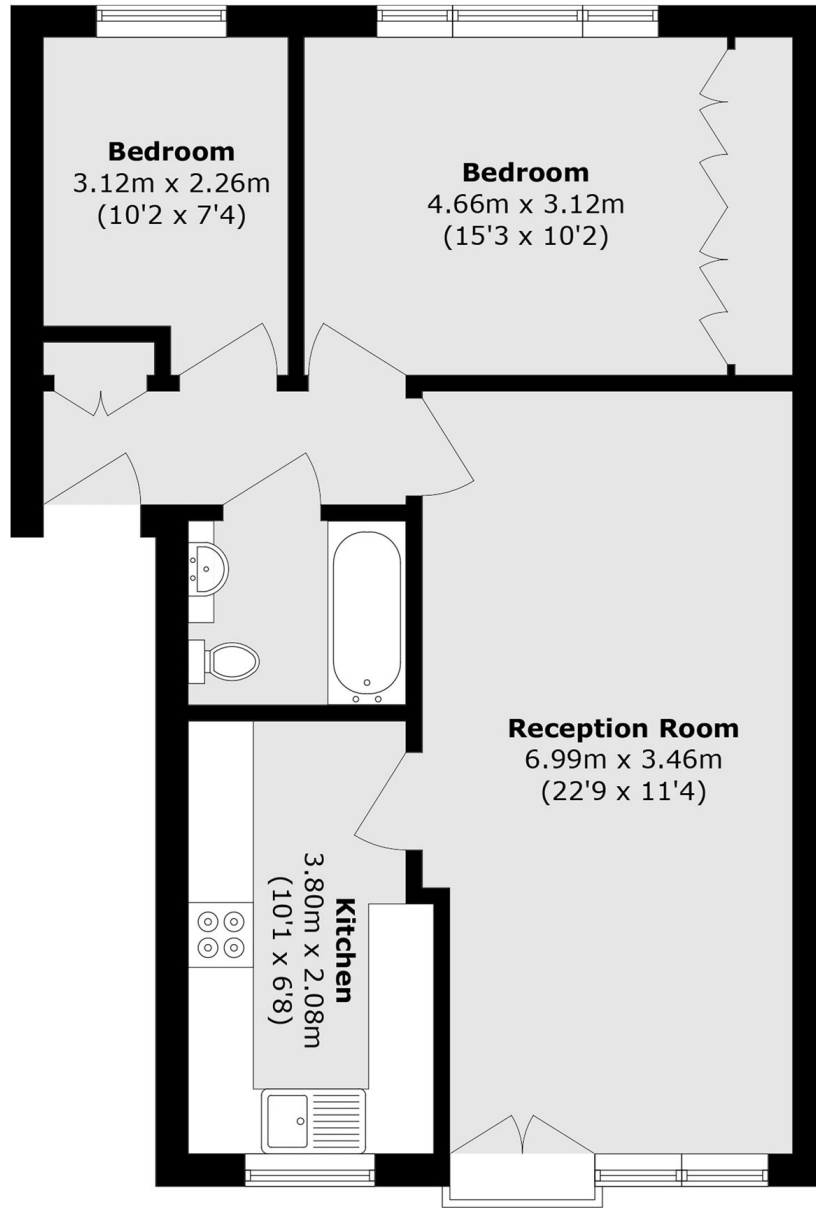
This bright two-bedroom first-floor flat offers a spacious reception room, separate kitchen, two double bedrooms one with fitted wardrobes and a modern bathroom. With around 140 years left on the lease, no onward chain, a nearby garage, and residents' parking, it's ideal for first-time buyers or investors.

Just half a mile from Ealing Broadway, the flat benefits from excellent transport links, including the Elizabeth Line, Central and District line. With a wide variety of restaurants, cafes, and shops on your doorstep, it's a convenient and highly desirable location to call home.

### Features

- First Floor
- Two Double Bedrooms
- Separate Kitchen
- Garage In Block
- Long Lease
- No Onward Chain

# Amherst Road, London, W13



Total area (approx.): 63.4 sq. m (682.4 sq. ft)