

**HS HAIR & SON**

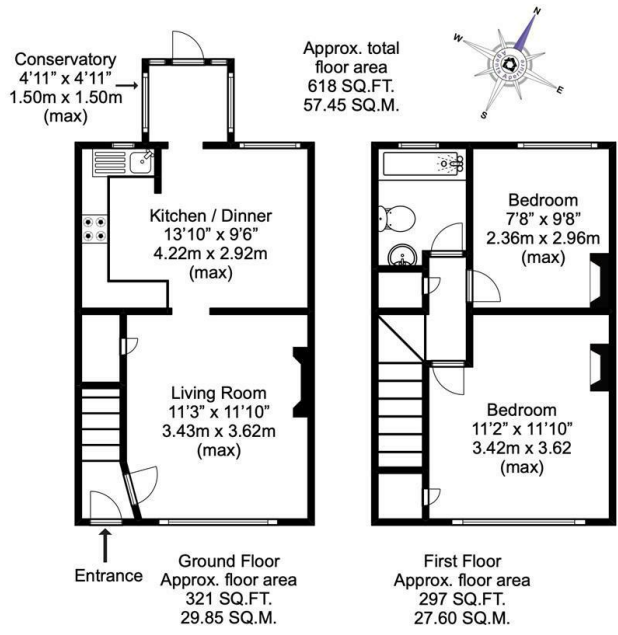


## Shoebury Road , Southend-on-Sea SS1 3RP

- TWO BEDROOM MID TERRACED HOUSE
- MODERN KITCHEN WITH ELECTRIC OVEN AND HOB
- BATHROOM WITH SHOWER OVER BATH
- REAR GARDEN
- APPLICANTS MUST BE IN FULL TIME EMPLOYMENT WITH A HOME OWNING GUARANTOR
- GOOD SIZE LOUNGE
- KITCHEN WITH DINING AREA
- GAS CENTRAL HEATING AND DOUBLE GLAZING THROUGHOUT
- NO PETS AND NO SHARERS
- CALL TO VIEW NOW!

**£1,400 PCM**

Local Authority **Southend on Sea Borough Council**  
 Council Tax Band **B**  
 EPC Rating **D**



**Disclaimer**  
 This plan is for illustrative purposes only and no responsibility is taken for any error, omission or misstatement. The appliances shown have not been tested and no guarantee as to their operability or efficiency can be given. Measurements have been added as a guide to prospective buyers only, are not precise, not to scale, may have been taken from the widest area and may include wardrobe / cupboard space. Garages and outbuildings may not be represented in their actual location in relation to the property. Compass point, measurements and total areas should be considered inaccurate and checked as no guarantee is given to their accuracy. Buyers are strongly advised to take their own measurements and compass bearing.



**Lettings Office**  
 190 London Road, Southend-On-Sea,  
 Essex, SS1 1PJ

**Contact**  
 01702 34 11 77  
<https://hairandson.co.uk/>

**Agents Note:** Whilst every care has been taken to prepare these particulars, they are for guidance purposes only. All measurements are approximate and for general guidance purposes only and whilst every care has been taken to ensure accuracy, they should not be relied upon and potential buyers/tenants are advised to recheck the measurements.

