

# Flat 2

30C Forest View, London

A bright and airy two bedroom apartment in the super spot of Forest View, moments from Chingford's bustling Station Road and train station. First floor and overlooking Chingford Golf Course, this is a terrific home for commuters and first-time buyers alike.

Council Tax band: D

Tenure: Leasehold

- Two bedroom apartment
- Overlooking Chingford Golf Course
- Short walk to Chingford train station
- Short walk to local shops and restaurants
- Close to Epping Forest
- Ideal for commuters



**Entrance Hall**

**Kitchen**

12' 6" x 6' 11" (3.80m x 2.10m)

**Living / Dining Room**

16' 5" x 12' 6" (5.00m x 3.80m)

**Bedroom**

13' 1" x 12' 6" (4.00m x 3.80m)

**Bedroom**

11' 2" x 7' 3" (3.40m x 2.20m)

**Shower Room**

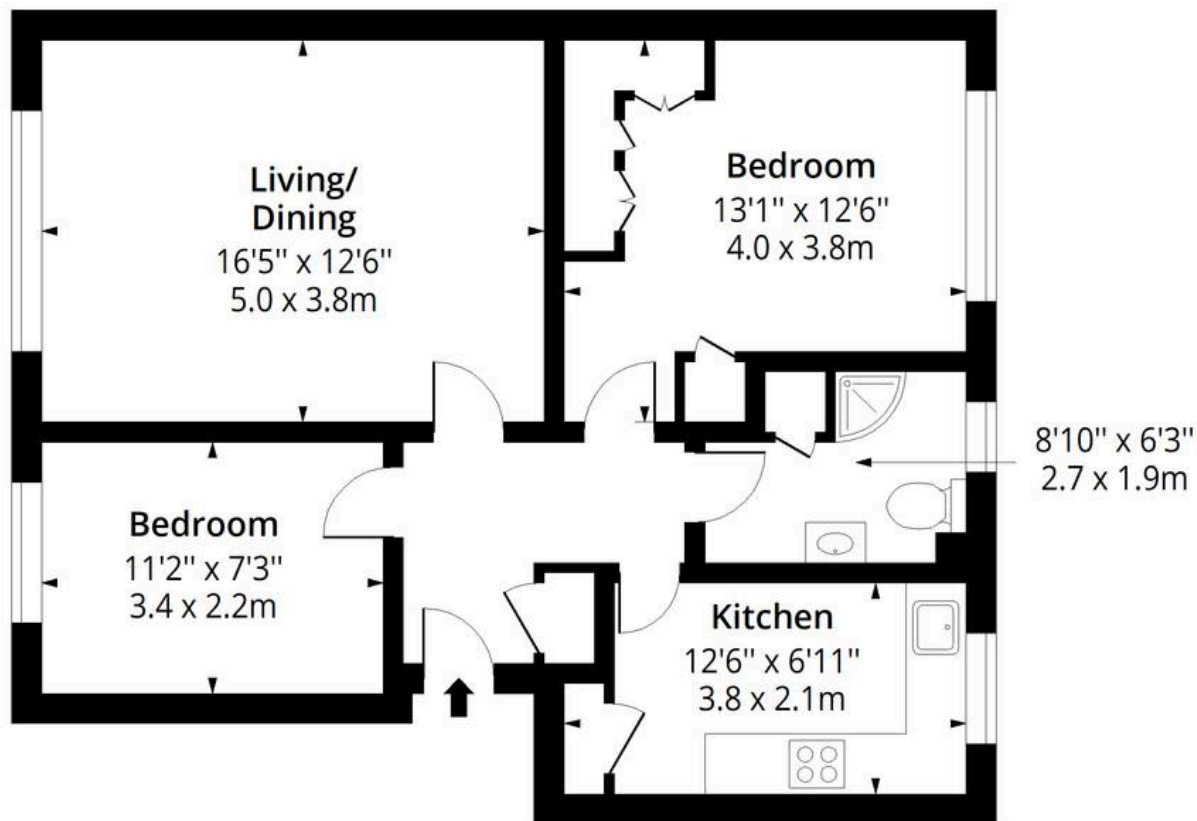
8' 10" x 6' 3" (2.70m x 1.90m)





# Forest View E4

Approx. Gross Internal Area 670 Sq Ft - 62.24 Sq M



## First Floor

Floor Area 670 Sq Ft - 62.24 Sq M



Measured according to RICS IPMS2. Floor plan is for illustrative purposes only and is not to scale. Every attempt has been made to ensure the accuracy of the floor plan shown, however all measurements, fixtures, fittings and data shown are an approximate interpretation for illustrative purposes only. 1 sq m = 10.76 sq feet.

Date: 3/6/2026