



Vicarage Walk, Clowne Chesterfield S43 4FH

welcome to

Vicarage Walk, Clowne Chesterfield

LEGAL FEES PAID UP TO £1300 PLUS VAT, T&C'S APPLY.

Modern three-storey home with a driveway, bright kitchen, spacious lounge/diner opening to the garden, two first-floor bedrooms and bathroom, plus a top floor main suite with en-suite. A flexible, designed home ideal for modern family living.

Driveway

The home begins with a practical, easy-to-maintain frontage offering dedicated parking right outside the door. The driveway provides a neat, welcoming first impression and sets the tone for a property designed around convenience and modern living.

Hall

A welcoming entrance hall offering access to the ground-floor rooms. It sets a calm, tidy first impression and leads naturally through the home.

Kitchen

The kitchen sits at the heart of the ground floor, bright and well-planned, with generous worktop space and modern cabinetry. It's a sociable, functional area that supports everything from quick weekday meals to relaxed weekend cooking, with room to move and work comfortably.

Downstairs W/C

Just off the entrance, the downstairs WC is a handy everyday addition. Ideal for guests and perfect for busy mornings. Its position keeps the ground floor running smoothly without interrupting the main living spaces.

Lounge / Diner

A spacious, open lounge/diner stretches across the rear of the home, offering a natural hub for both relaxing and entertaining. With room for a dining table and a comfortable seating area, it's a versatile space that flows beautifully and opens out to the garden, drawing in plenty of natural light.

Stairs / Landing

The first-floor landing connects the two bedrooms and bathroom, offering a calm midpoint between the living areas below and the private top-floor suite

Bedroom Two

A generous double room with a balanced layout, ideal as a main family bedroom, guest room or child's room. Its proportions make furnishing simple and flexible.

Bedroom Three

Another well-sized bedroom, perfect for a child's room, nursery, workspace or hobby room. Its shape and natural light make it an easy, adaptable space.

Bathroom

The first-floor bathroom is modern and fresh, fitted with a full suite and designed for comfort and practicality. It serves bedrooms two and three perfectly, offering a clean, bright space for daily routines.

Stairs

A second staircase leads to the top floor, creating a sense of separation and retreat as you step up into the main bedroom suite.

Bedroom One

Occupying the entire top floor, the main bedroom is a standout feature — spacious, peaceful and full of character. Its generous floorplan allows for a full bedroom setup with room to spare for dressing furniture or a cosy reading corner.

En-Suite

The en-suite adds a touch of luxury to the top-floor suite, offering a modern shower room that makes this level feel like a private sanctuary away from the rest of the home.



Rear Garden

The rear garden is a lovely extension of the living space, accessed directly from the lounge/diner. With a lawned area and room for outdoor seating, it's ideal for relaxing, entertaining or simply enjoying a bit of fresh air in a private, enclosed setting.



view this property online williamhbrown.co.uk/Property/CSF105087



welcome to

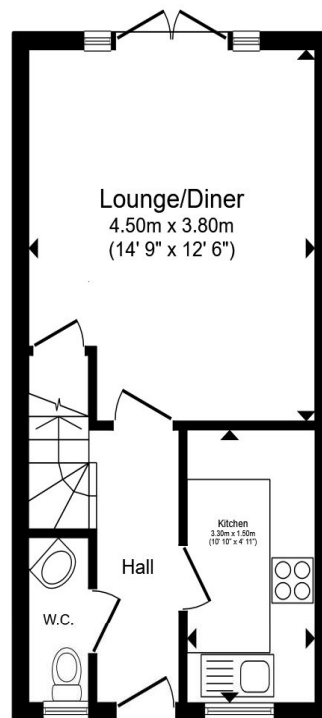
Vicarage Walk, Clowne Chesterfield

- LEGAL FEES PAID UP TO £1300 + VAT, T&C'S APPLY.
- Council Tax Band - B
- Allocated Parking
- Accommodation Over Three Floors
- Bright Modern Kitchen

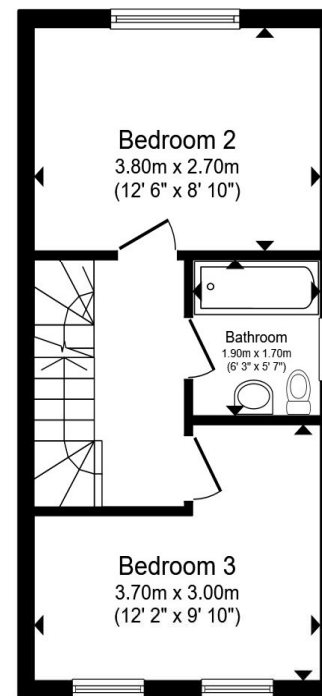
Tenure: Freehold EPC Rating: C

Council Tax Band: B

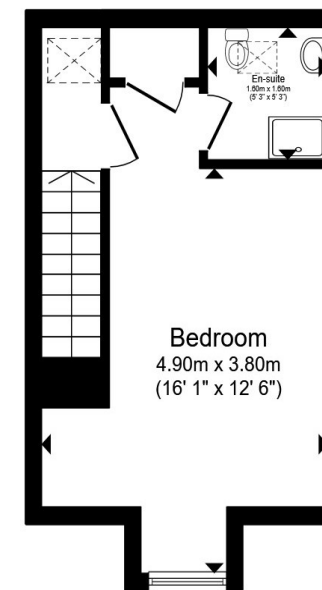
£210,000



Ground Floor



First Floor



Second Floor

Total floor area 83.0 m² (893 sq.ft.) approx

This floor plan is for illustrative purposes only. It is not drawn to scale. Any measurements, floor areas (including any total floor area), openings and orientation are approximate. No details are guaranteed, they cannot be relied upon for any purpose and they do not form part of any agreement. No liability is taken for any error, omission or misstatement. A party must rely upon its own inspection(s). Powered by www.propertybox.io



view this property online williamhbrown.co.uk/Property/CSF105087



Property Ref:
CSF105087 - 0002

1. MONEY LAUNDERING REGULATIONS Intending purchasers will be asked to produce identification documentation at a later stage and we would ask for your co-operation in order that there is no delay in agreeing the sale. 2. These particulars do not constitute part or all of an offer or contract. 3. The measurements indicated are supplied for guidance only and as such must be considered incorrect. Potential buyers are advised to recheck measurements before committing to any expense. 4. We have not tested any apparatus, equipment, fixtures or services and it is in the buyers interest to check the working condition of any appliances. 5. Where an EPC, or a Home Report (Scotland only) is held for this property, it is available for inspection at the branch by appointment. If you require a printed version of a Home Report, you will need to pay a reasonable production charge reflecting printing and other costs. 6. We are not able to offer an opinion either written or verbal on the content of these reports and this must be obtained from your legal representative. 7. Whilst we take care in preparing these reports, a buyer should ensure that his/her legal representative confirms as soon as possible all matters relating to title including the extent and boundaries of the property and other important matters before exchange of contracts.

William H Brown is a trading name of Sequence (UK) Limited which is registered in England and Wales under company number 4268443, Registered Office is Cumbria House, 16-20 Hockliffe Street, Leighton Buzzard, Bedfordshire, LU7 1GN. VAT Registration Number is 500 2481 05.

william h brown



01246 204492



chesterfield@williamhbrown.co.uk



6 Glumangate, CHESTERFIELD, Derbyshire, S40 1TP



williamhbrown.co.uk