



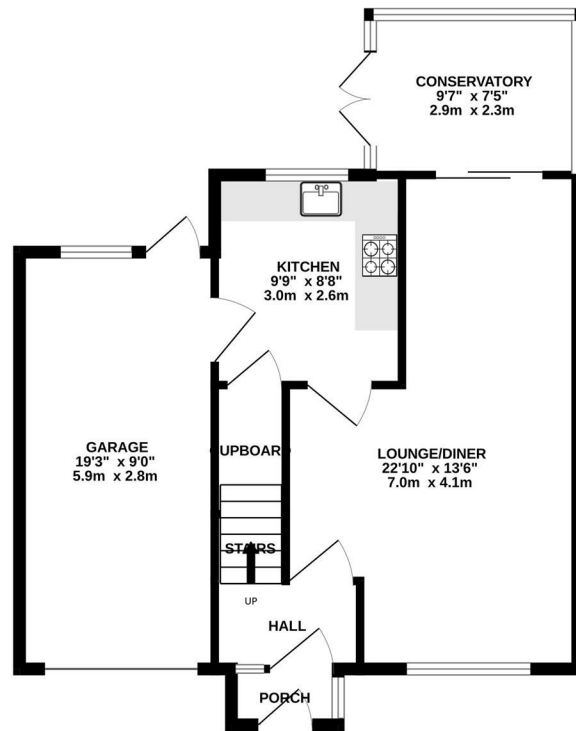
3 Bed  
House - Detached  
located in

£1,100 Per month

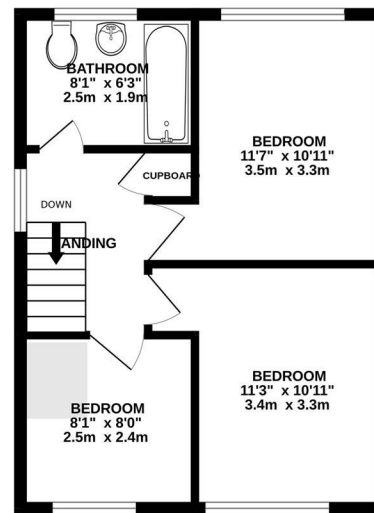


**SMART STREET**  
THE PROPERTY PEOPLE

GROUND FLOOR

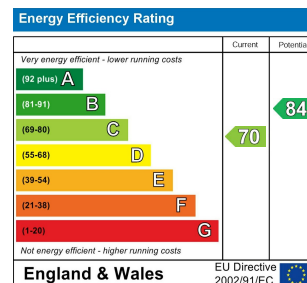


1ST FLOOR



TWO FLOORS, THREE BEDROOMS

Whilst every attempt has been made to ensure the accuracy of the floorplan contained here, measurements of doors, windows, rooms and any other items are approximate and no responsibility is taken for any error, omission or mis-statement. This plan is for illustrative purposes only and should be used as such by any prospective purchaser. The services, systems and appliances shown have not been tested and no guarantee as to their operability or efficiency can be given.  
Made with Metropix ©2025



## DIRECTIONS

## CONTACT

14 Withambrook Park  
Grantham  
NG31 9ST

E: [info@smartstreetproperty.com](mailto:info@smartstreetproperty.com)  
T: 01476 247107



**SMART STREET**  
THE PROPERTY PEOPLE