



DESCRIPTION

This bright and well kept apartment offers a fantastic opportunity for first time buyers, downsizers or investors alike.

Inside, the accommodation is well laid out and filled with natural light. The lounge provides a comfortable space to relax, while the galley style kitchen is both practical and efficient, offering good storage and workspace. There are two well proportioned bedrooms, along with a modern bathroom, and built-in storage adds to the overall functionality of the home.

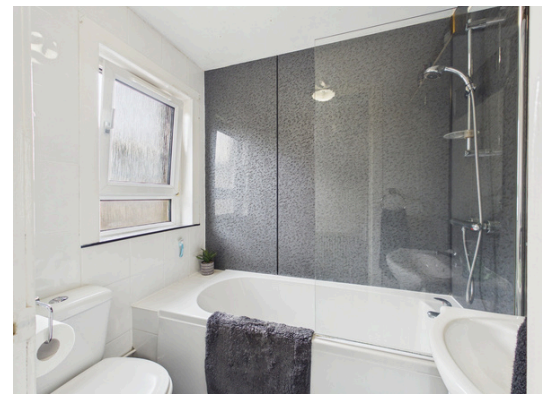
One of the standout features is the outdoor space, with a garden to the front and a private garden to the rear, offering great external space for an apartment, perfect for enjoying the warmer months.

Overall, this is a charming and well presented home in a popular Dunfermline location, offering great value and ready for someone to move straight in and enjoy.

Key Features:

- Bright and well presented apartment
- Two well proportioned bedrooms
- Galley style kitchen
- Modern bathroom
- Built-in storage
- Front garden and private rear garden
- Move-in ready condition
- Ideal for first time buyers or investors
- Popular Dunfermline location

To view, please contact Gibson Estate Agents.



LOCATION

The property is situated within the popular and well established area of Dunfermline, a sought after location known for its excellent range of amenities and strong community feel. The town offers a variety of shops, cafes, restaurants and leisure facilities, along with beautiful parks and green spaces, including the historic Pittencrieff Park, perfect for walks and family outings. There are also a number of well regarded primary and secondary schools nearby, making it an ideal setting for families.

Dunfermline is well placed for commuters, with excellent transport links including easy access to the M90 motorway, connecting to Edinburgh, Perth and beyond. The town also benefits from regular bus services and train stations providing direct routes to Edinburgh and surrounding areas. In addition, Dunfermline offers a wide selection of supermarkets, retail parks and local businesses, ensuring all day to day needs are well catered for.

