



Elm Grove, SW19

£565,000

* Share Of The Freehold * A ground floor maisonette with two bedrooms and one bathrooms located within the centre of Wimbledon. There is a high specification throughout, including German & Italian appliances in the kitchen. Further benefits include low running costs and a share of the freehold.

70% NOW SOLD - PLEASE CALL TO VIEW.

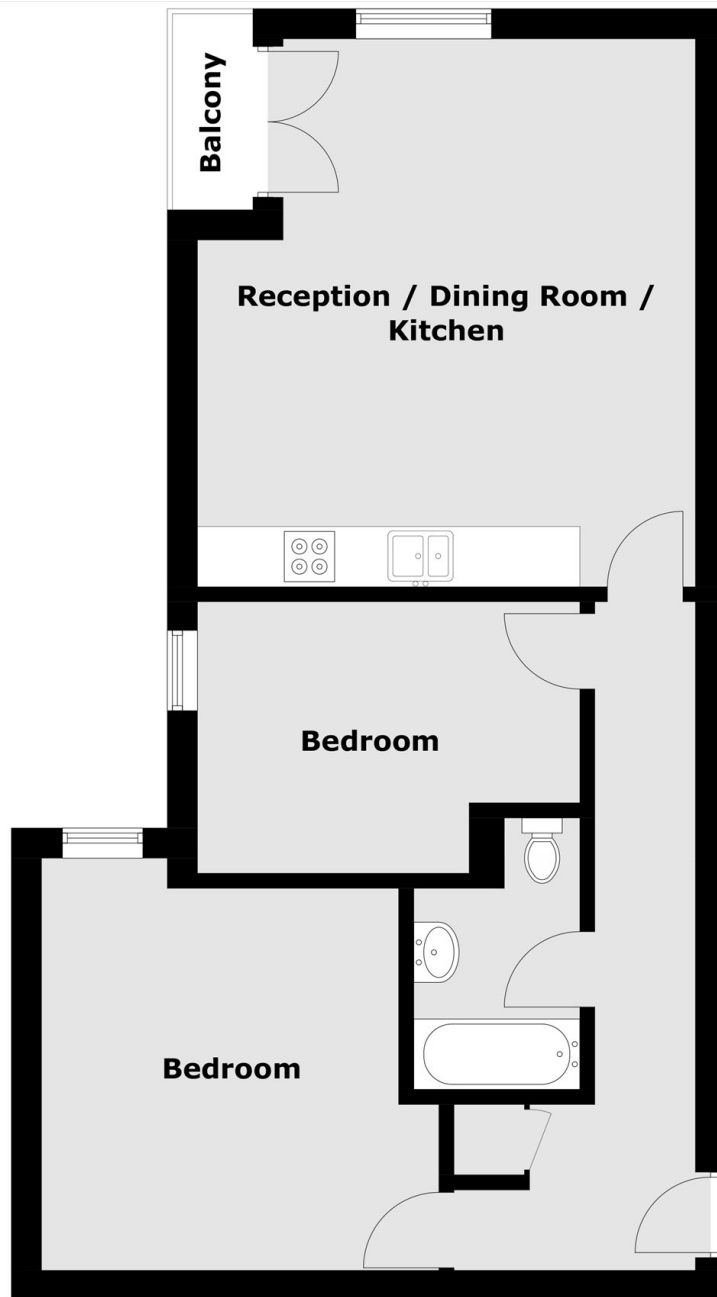
Please note - Whilst every effort has been made to accurately portray the development, CGI images have been used, alongside indicative floorplans produced from the planning documents.

Elm Grove is a cul-de-sac situated just off of Worple Road and just under half a mile walk from Wimbledon Broadway allowing easy access to the town centre's restaurants and shops. Transport links include overground, underground and a number of good bus routes

Features

Eco-Conscious Build
Two Bedrooms
Two Bathrooms
Terrace/Patio Garden
Wimbledon - Walking Distance
Bike & Parcel Store
Share Of The Freehold

Elm Grove,
Wimbledon, SW19



Flat 14
Second Floor

Total area (approx.): 59.37 sq. m (639.0 sq. ft)
Balcony: 3.0 sq. m (32.3 sq. ft)