

Boardwalk

Boot Lane

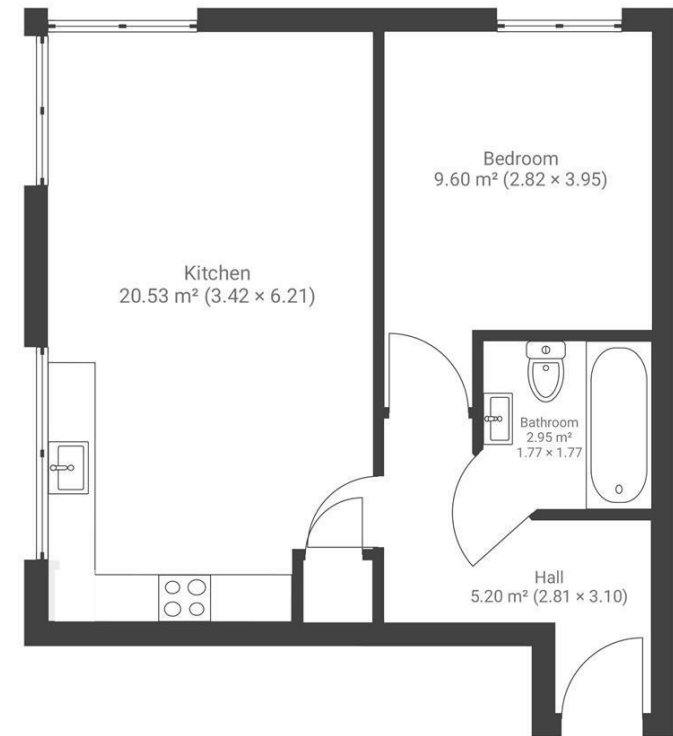
BEDMINSTER, BRISTOL

Boot Lane BEDMINSTER

APPROXIMATE FLOOR AREA
40.5 SQM / 436 SQFT



FIRST FLOOR



Boardwalk

Boot Lane

BEDMINSTER, BRISTOL



£220,000



1 Bedrooms



BS3 4BD



1 Bathrooms

"The location is one of my favourite things about the home, the city centre is on your doorstep and pretty much everything you need is walkable. Whether it's a stroll to the park or down to King Street, you're looking at no more than 15 minutes on foot."

