



49 Meadow Road, Bushey – WD23 3PW
£530,000





Beautifully presented and finished to a modern standard, this stylish 3 bedroom end of terrace home offers comfortable living in a highly convenient setting. A welcoming entrance hall leads to a contemporary fitted kitchen positioned at the front of the property, while a practical utility room with WC adds everyday ease. To the rear, a spacious lounge creates the perfect space for relaxing or entertaining, with double-glazed bifolding doors opening seamlessly onto a south-west facing garden, ideal for enjoying afternoon and evening sun, complete with ample outdoor storage. Upstairs, three well proportioned bedrooms are complemented by a sleek, modern family bathroom. Further benefits include gas central heating, double glazing throughout, and ample off-street parking via a smart block-paved driveway. Ideally located close to local shops and well regarded schools, this home perfectly blends modern comfort with family friendly convenience.





- 3 Bedroom End Of terrace House
- Well Presented Throughout
- Spacious Lounge
- Utility Room/ Downstairs WC
- Modern Kitchen & Bathroom
- South West Facing Garden
- Ample Off Street Parking
- Close To Local Schools

Council Tax band: D

Tenure: Freehold

EPC Energy Efficiency Rating: C

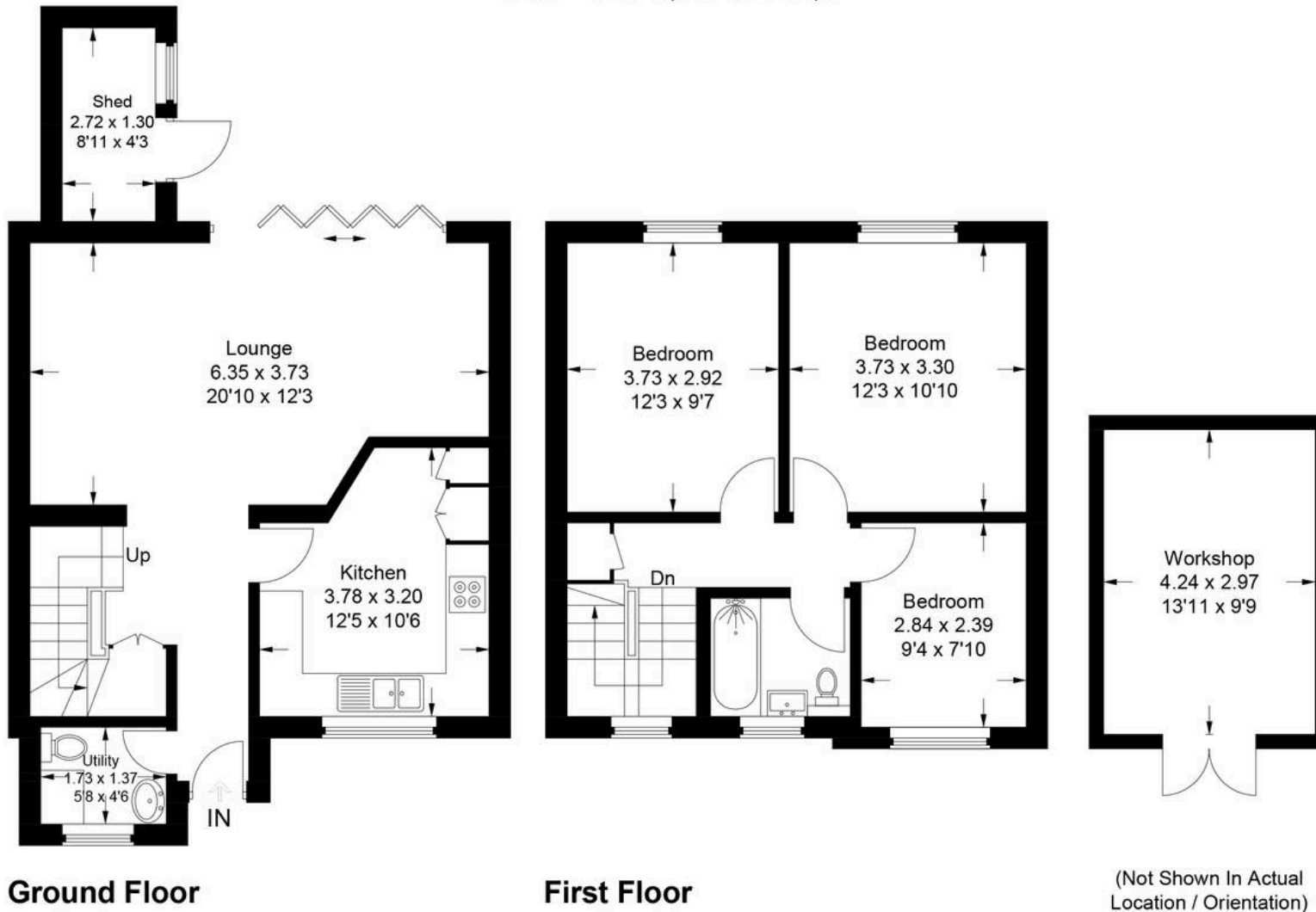






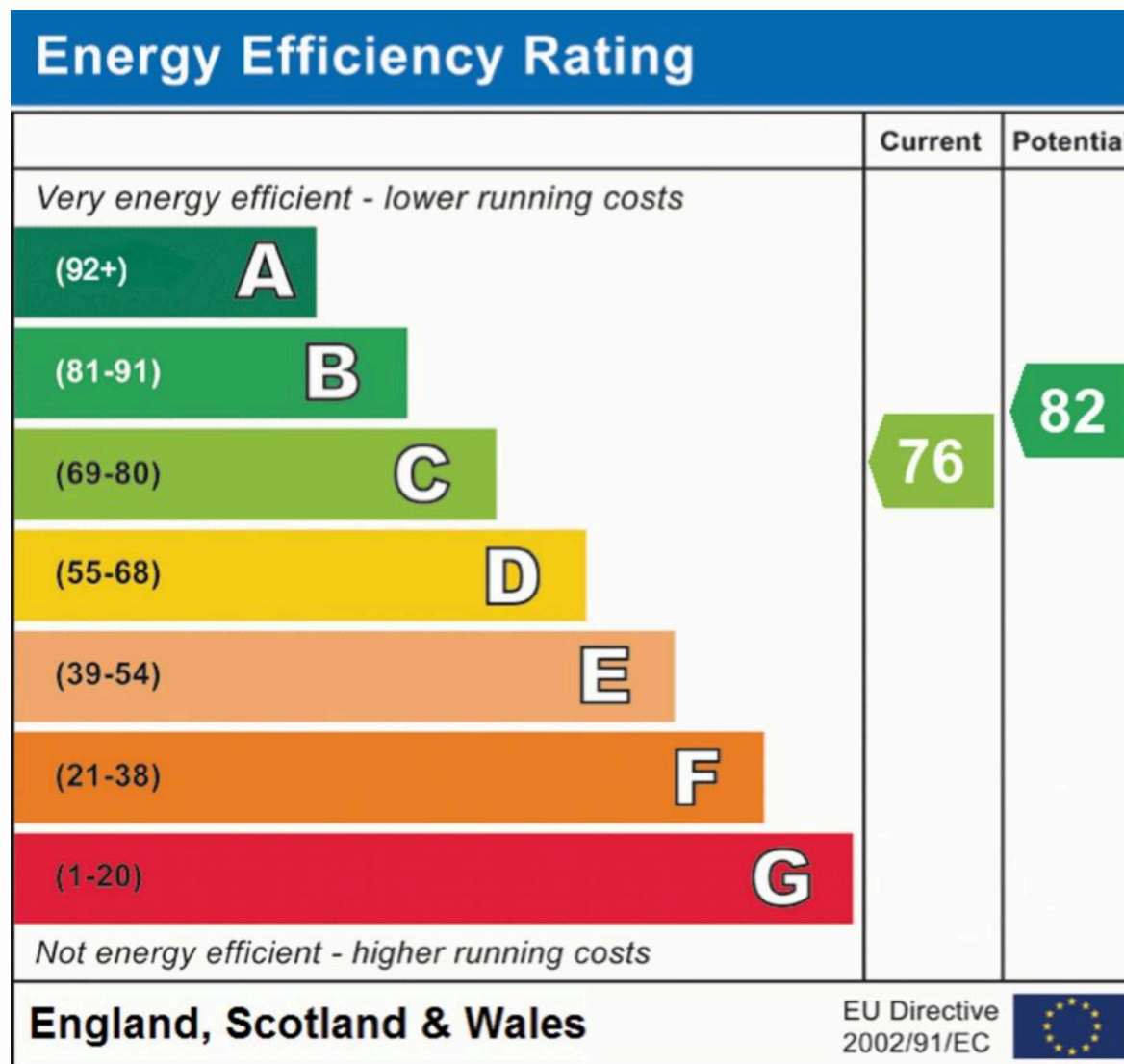
Meadow Road

Approximate Gross Internal Area
Ground Floor = 46.5 sq m / 500 sq ft
First Floor = 42.6 sq m / 458 sq ft
Workshop / Shed = 16.2 sq m / 174 sq ft
Total = 105.3 sq m / 1,132 sq ft



This plan is for layout guidance only. Not drawn to scale unless stated. Windows and door openings are approximate. Whilst every care is taken in the preparation of this plan, please check all dimensions, shapes and compass bearings before making any decisions reliant upon them.

© CJ Property Marketing Ltd Produced for Churchills



Churchills – Bushey

Churchills Independent Estate Agents, 72 High Street – WD23 3HE

020 8950 0033

francesco@churchillsbushey.co.uk

churchillsbushey.co.uk/

We have prepared these particulars as a general guide of the property and they are not intended to constitute part of an offer or contract. We have not carried out a detailed survey of the property and we have not tested any apparatus, fixtures, fittings, or services. All measurements and floorplans are approximate, and photographs are for guidance only. These should not be relied upon for the purchase of carpets or any other fixtures or fittings. Lease details, service charges and ground rent (where applicable) have been provided by the client and should be checked and confirmed by your solicitor prior to exchange of contracts.