



Manor Gardens, W3

£700,000

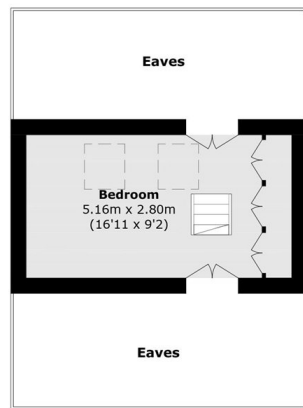
Set over three floors a three bedroom mid terrace family home situated between Gunnersbury and Chiswick spanning 1150 sq ft of living space. The house is full of character with potential to extend (STPP) a secluded garden and a private garage and will be sold with no onward chain.

Located within a 10 minute walk from Chiswick High Street and just over a half mile from Acton Town station (District and Piccadilly Line) and moments away from Gunnersbury park.

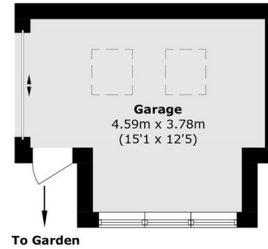
Features

- Three Bedroom
- Loft Room
- Garage
- Potential to Extend (STPP)
- Chiswick Borders
- No Onward Chain

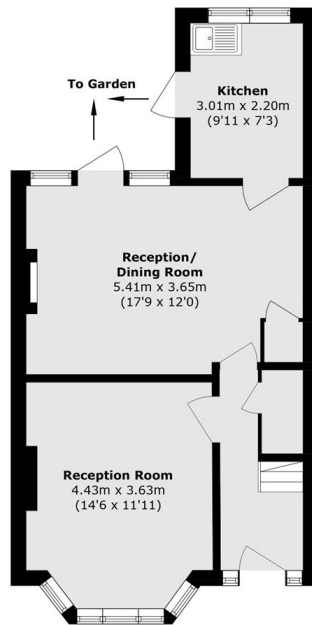
Manor Gardens, London, W3



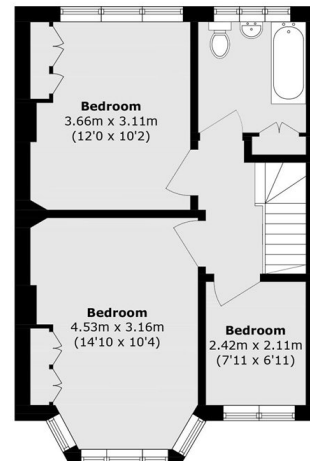
Second Floor



Ground Floor



Ground Floor



First Floor

Total area (approx.): 106.3 sq. m (1144.2 sq. ft)
(Excluding Eaves)
Garage area (approx.): 15.2 sq. m (163.6 sq. ft)