



Tyndale | £750,000

Butts Green, Lockerley, Hampshire, SO51 0JJ





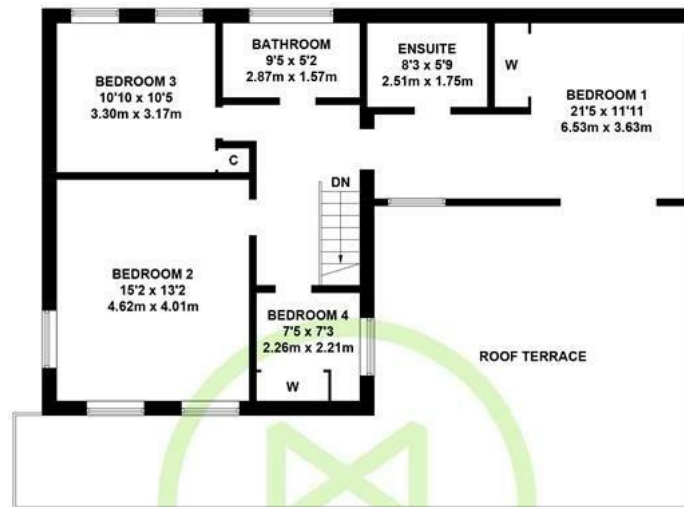
Tyndale Butts Green
Butts Green, Lockerley, Hampshire, SO51 0JJ

01794 521339 / 02382 541100
homes@henshawfox.co.uk
www.henshawfox.co.uk

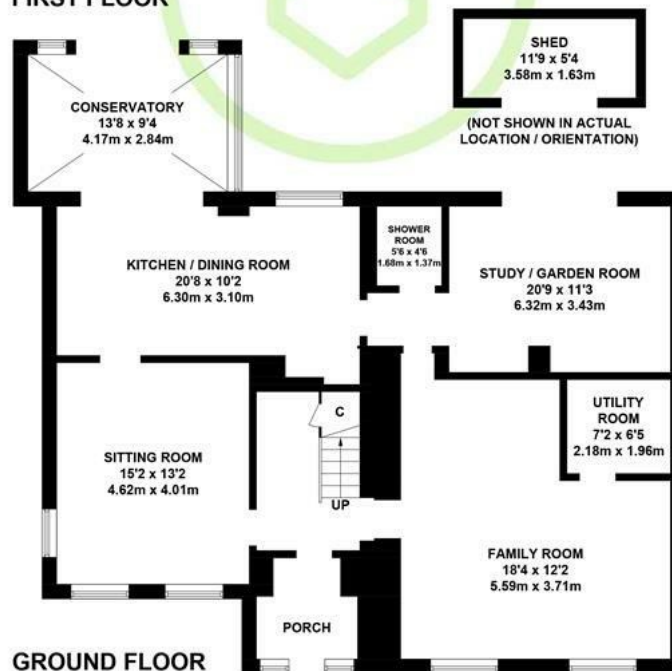


Summary

A beautifully presented, wonderfully light and social home, located within Lockerley village, enjoying far reaching westerly facing countryside views. The ground floor consists of a sitting room, kitchen/dining room opening into a conservatory, study/garden room, two shower rooms and large family room with annex potential. Upstairs are four bedrooms, with bedroom one benefiting from a luxury en-suite and large roof terrace. Outside is a low maintenance rear garden with a 'John Lewis Pod Summerhouse' and ample driveway parking to the front of the home.



FIRST FLOOR



GROUND FLOOR

APPROXIMATE GROSS INTERNAL AREA
GROUND FLOOR = 1368 SQ FT / 127.1 SQ M
FIRST FLOOR = 800 SQ FT / 74.3 SQ M
SHED = 63 SQ FT / 5.9 SQ M
TOTAL = 2231 SQ FT / 207.3 SQ M

Illustration for identification purposes only,
measurements are approximate, not to scale. (ID1075170)

Features

- A light and spacious detached home in the popular village of Lockerley
- Far reaching westerly facing views from a roof terrace, enjoying evening sun sets
- Four bedrooms, luxury en-suite, family bathroom and two further shower rooms
- Study/Garden room, with access to ground floor shower room and WC
- Sitting room, kitchen/dining room, family room with annexe potential and conservatory
- Driveway parking for several vehicles
- Low maintenance rear garden

EPC Rating

Energy Efficiency Rating
Current D
Potential C

Tyndale Butts Green

Butts Green, Lockerley, Hampshire, SO51 0JJ

Ground Floor

A large porch opens into the entrance hallway, which provides access to the first floor via the staircase, the under stairs storage and sitting room. The sitting has a pleasant double aspect, an opening leads to the kitchen/dining room. This is a wonderfully light and open space, ideal for entertaining and family alike, the perfect space for modern living. The kitchen is fitted with a range of cupboards and drawers, a six ring 'Bosch' hob with extractor canopy over, double 'Neff' oven with warming drawer and space for fridge/freezer. The conservatory leads to and overlooks the rear garden. A study/garden room has sliding doors leading to the rear garden, there is access to a shower room which is fitted with a WC with inset wash hand basin, enclosed shower cubicle and heated towel rail. The study/garden room offers many uses as a room, including a ground floor bedroom. The family room is a large room overlooking the front of the home, access leads to a shower room with WC, wash basin, walk in shower and heated towel rail.

First Floor

The first floor landing provides access to the four bedrooms, the family bathroom and loft space. Bedroom one is a double room with built in wardrobes, the en-suite is fitted with stylish white suite comprising WC, wash basin, freestanding bath with shower attachment and heated towel rail. Sliding doors lead from bedroom one to a large roof terrace, with far reaching countryside views and a westerly aspect enjoying the afternoon sun and evening sun sets. Bedrooms two and three are both double rooms and bedroom four, currently used as a dressing room, is a good size single room. The family bathroom is fitted with a modern white suite comprising WC, wash basin, bath with shower over, fitted shower screen and heated towel rail.

Outside

The rear garden offers a great deal of privacy, is laid with artificial lawn and a large patio area. There is 'John Lewis Ornate Garden Summerhouse Pod', an outbuilding with power and lighting and a further shed. Side access leads to the front of the home. The front garden is mainly laid to lawn with well stocked borders.

Parking

There is driveway parking for several vehicles to the front of the home.

Location

Lockerley is a beautiful scenic village in the heart of the Test Valley, offering a semi-rural setting and a lovely community feel. There is a local primary school as well as an ideal convenience store opposite Lockerley Green. The village itself is well connected to Romsey (6.4 miles) and neighbouring villages of Dunbridge and West Dean which host a train station and a popular public house.

Sellers Position

Looking for forward purchase

Heating

Oil fired central heating

Infants & Junior School

Lockerley C of E Endowed Primary School

Secondary School

Test Valley School

Council Tax

Band G - Test Valley Borough Council

Terms and Conditions

These particulars are set out as a general outline and do not constitute any part of an offer or contract. We have not tested any services, appliances or equipment and no warranty is given or implied that these are in working order. Fixtures, fittings and furnishings are included unless specifically described. All measurements, floor plans, distances and areas are approximate and for guidance only. It should not be assumed that the property remains the same as shown in the photographs.

01794 521339 / 02382 541100

homes@henshawfox.co.uk

www.henshawfox.co.uk

