



Crew Farm Barn, Crew Lane, Kenilworth, CV8 2LA

£1,750 PCM

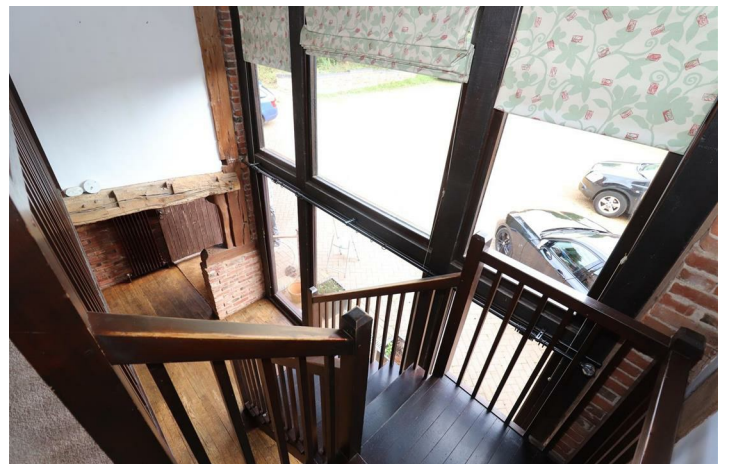
- Detached Barn Conversion
- Two Well Proportioned Bedrooms
- Ample Parking
- Oil Fired Central Heating
- Open Outlook To The Rear
- Wealth of Original Features
- EPC Rating E
- Extensive Rear Garden
- Stunning Lounge with Exposed Beams
- Available 27th April 2026

Crew Lane, Kenilworth CV8 2LA

A stunning barn conversion with a wealth of original features. Extensive gardens and rural location. With an open plan lounge, fitted kitchen, utility, two bedrooms, bathroom and en suite. Attractive mezzanine landing. Oil fired central heating. Available 27th April 2026 UNFURNISHED.



Council Tax Band: G



ENTRANCE

You enter into a small vestibule area with coir matting and stripped wood flooring.

DINING AREA

With stripped wood flooring, exposed beams throughout, French doors with matching side light windows, downlighters, stairs to the mezzanine landing, radiator and exposed brick walls.

SITTING ROOM

Continuation of the wood flooring, ornate wood burning stove set on a flagstone hearth, radiator, exposed beams and brickwork, full height window and opening into the study area.

STUDY

With windows onto the rear and side gardens, stripped flooring, vaulted and beamed ceiling and a radiator.

KITCHEN

With tiled flooring and fitted with a range of shaker style wall and base units. The base units have a wood block effect roll topped worksurface with a corner double bowl sink unit set beneath the double glazed windows to the fore. Integrated oven, fridge freezer, halogen hob and dishwasher. Tiling to splashbacks, extractor canopy and radiator. Door onto rear garden and utility.

UTILITY

With quarry tiled floor, wash hand basin, pantry, wall and base units, washing machine and window to the rear garden

MEZZANINE

With an amazing vaulted ceiling and full height windows to the front and rear elevations. Doors off to

MASTER BEDROOM

With vaulted ceiling with exposed beams, school house radiator, wardrobes and a door into the ensuite.

EN SUITE

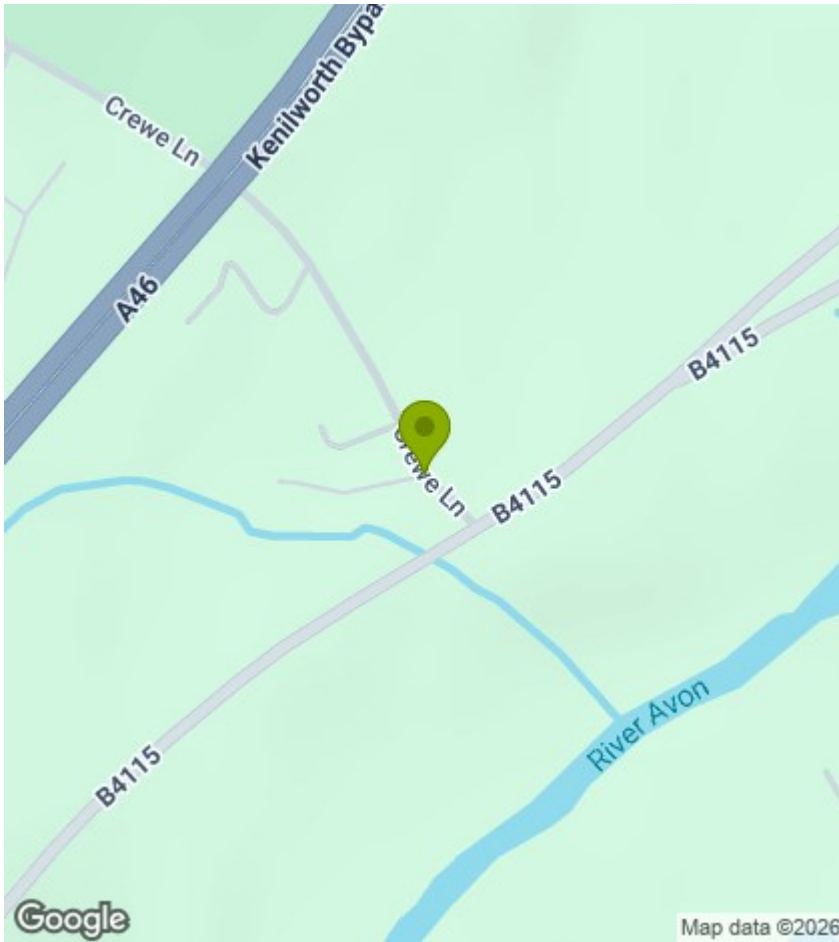
With a shower cubicle, vanity unit and a close coupled wc. Velux window and a cabinet.

BEDROOM TWO

A vaulted ceiling with exposed beams, velux window, school house radiator and a bank of fitted wardrobes.

BATHROOM

Fully tiled with a bath, wash hand basin and a close coupled wc.



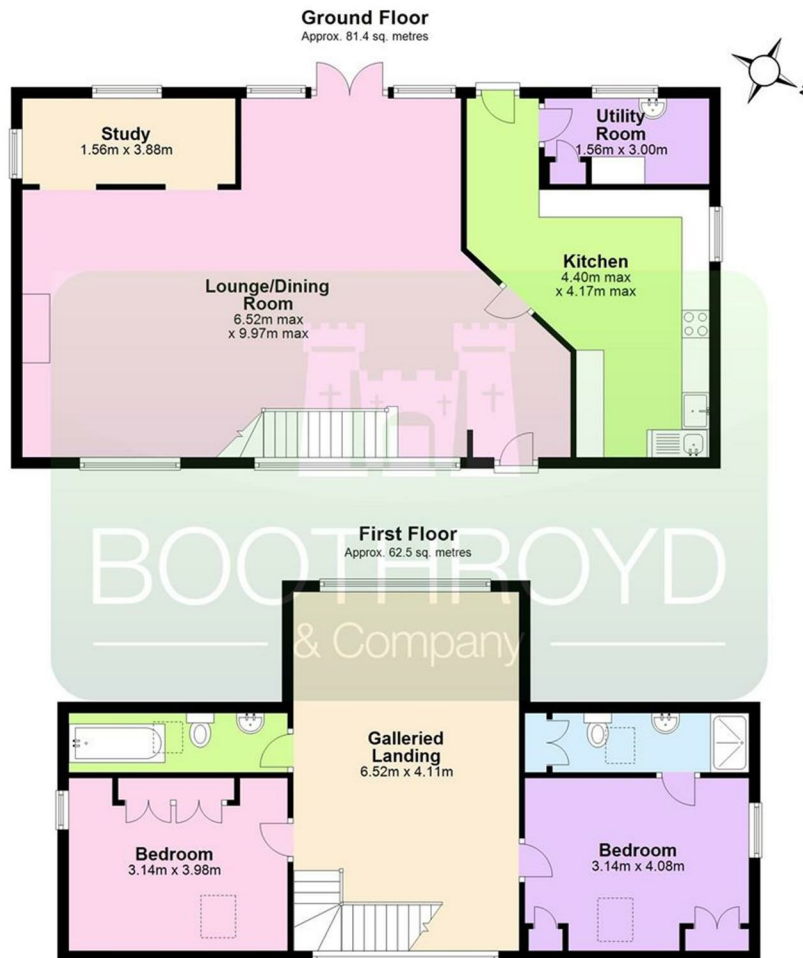
Viewings

Viewings by arrangement only. Call 01926 857244 to make an appointment.

EPC Rating:

E

Energy Efficiency Rating		Current	Potential
Very energy efficient - lower running costs			
(92 plus) A			
(81-91) B			
(69-80) C			
(55-68) D			
(39-54) E		53	66
(21-38) F			
(1-20) G			
Not energy efficient - higher running costs			
England & Wales		EU Directive 2002/91/EC	



Total area: approx. 143.9 sq. metres