

**LONDON
VICTORIA
GROUPS** 



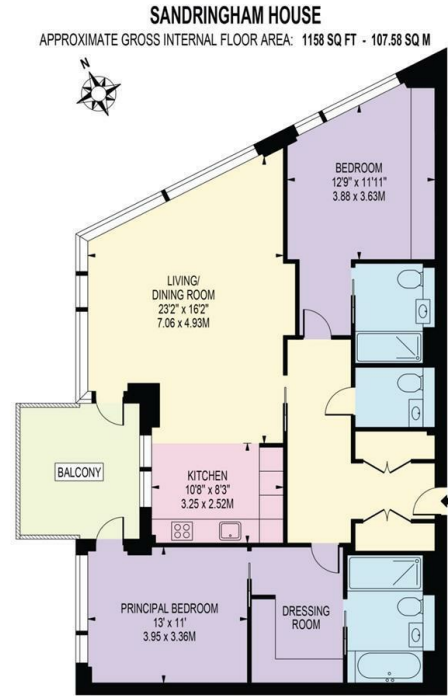
Sandringham House, Earls Way

, London SE1 2QX

- 24-hour concierge service
 - Relaxation pool
- Fully equipped residents' gym
 - Private meeting room
 - EPC-C
- Indoor swimming pool
 - Luxury spa facilities
 - Business lounge
- Secure entry system and lift access
 - CTB-G

£5,800 Per Month

Local Authority **Southwark**
Council Tax Band **G**
EPC Rating **C**



London Office Office
Spaces Victoria, 25 Wilton Road, Pimlico,
London, SW1V 1LW

Contact
020 3084 3094
XL@londonvictoriagroups.co.uk
www.londonvictoriagroups.co.uk

Agents Note: Whilst every care has been taken to prepare these particulars, they are for guidance purposes only. All measurements are approximate and for general guidance purposes only and whilst every care has been taken to ensure accuracy, they should not be relied upon and potential buyers/tenants are advised to recheck the measurements.

