

AVAILABLE



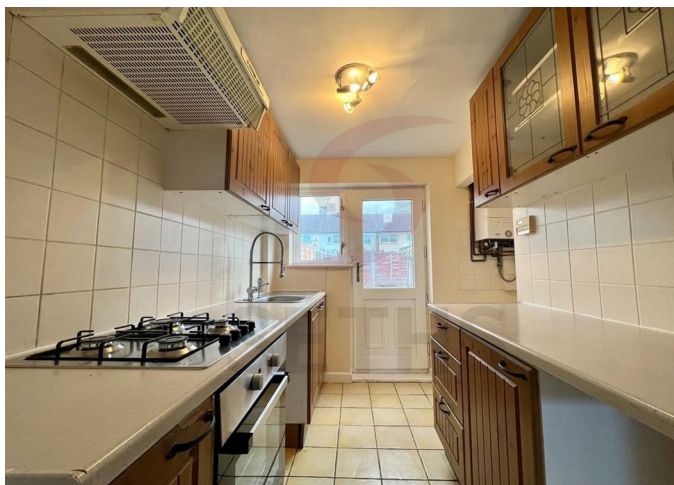
House - Terraced

COTSWOLD GREEN LEICESTER LE4 2LF

£1,100 PCM

FEATURES

- Three Bedroom Terrace
- Fitted Kitchen
- Gas Central Heating
- Through Lounge
- Double Glazing
- Bathroom



 **SETHS**

3 Bedroom House - Terraced located in Leicester

****No Deposit Option Available****

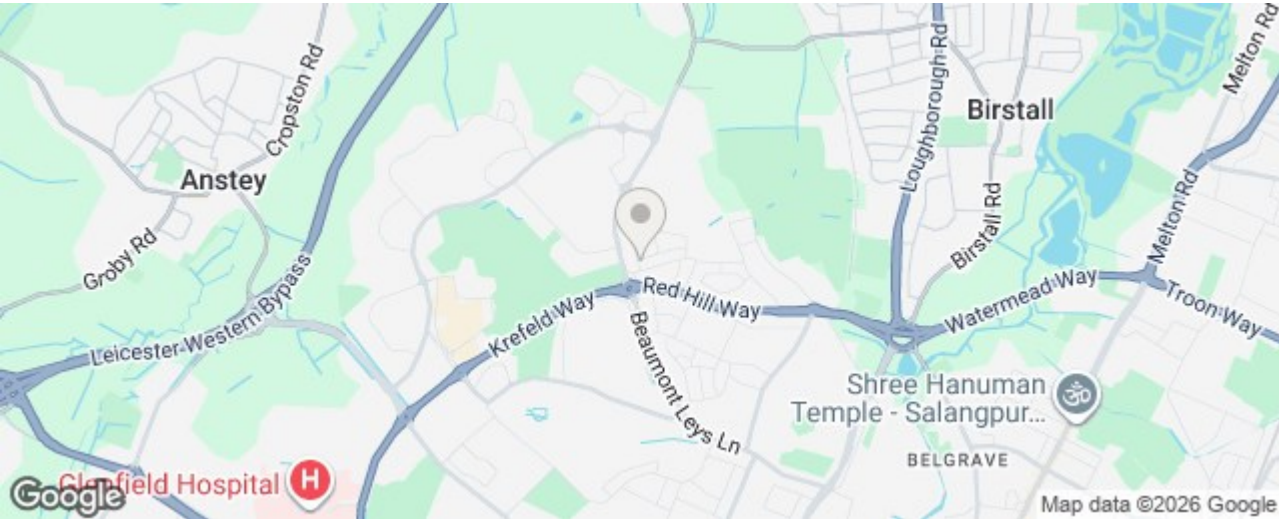
Seths are proud to present this well-proportioned three-bedroom townhouse, ideally located on Cotswold Green in the popular Mowmacre Hill area.

The property offers spacious and comfortable living accommodation, featuring a large through lounge providing an ideal space for both relaxing and entertaining. The fitted kitchen is equipped with an integrated gas hob and oven, offering practicality for everyday living.

Upstairs, the property comprises three well-sized bedrooms and a family bathroom fitted with a bath and shower over, wash basin, and W.C.

To the rear, the property benefits from a private garden, perfect for outdoor enjoyment. Additional features include double glazing and gas central heating throughout, ensuring comfort and efficiency all year round.

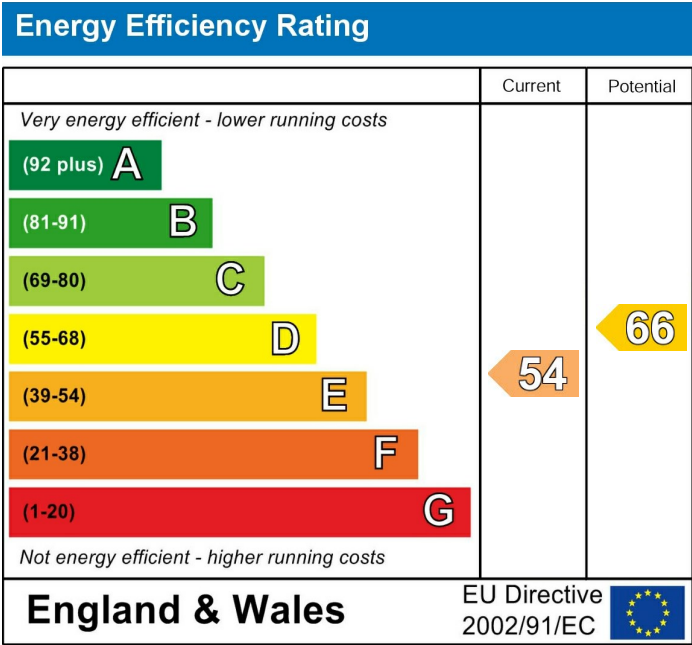
Rent: £1100PCM
 Security Deposit: £1265.00
 Tenancy Length: 6
 Council Tax Band: A
 Pets may be considered at the landlord's discretion and will be subject to a higher rent.



Call us on
 0116 266 9977

let@seths.co.uk
 www.seths.co.uk

Council Tax Band
 A



Agents Note: Whilst every care has been taken to prepare these particulars, they are for guidance purposes only. All measurements are approximate and are for general guidance purposes only and whilst every care has been taken to ensure their accuracy, they should not be relied upon and potential buyers are advised to recheck the measurements.

