



Agincourt Road, Lichfield, WS14 0GH - No Upward Chain

£310,000

3 2 1



NO UPWARD CHAIN - Agincourt Road is a well-presented three-bedroom townhouse, ideally positioned in a popular residential area of Lichfield.

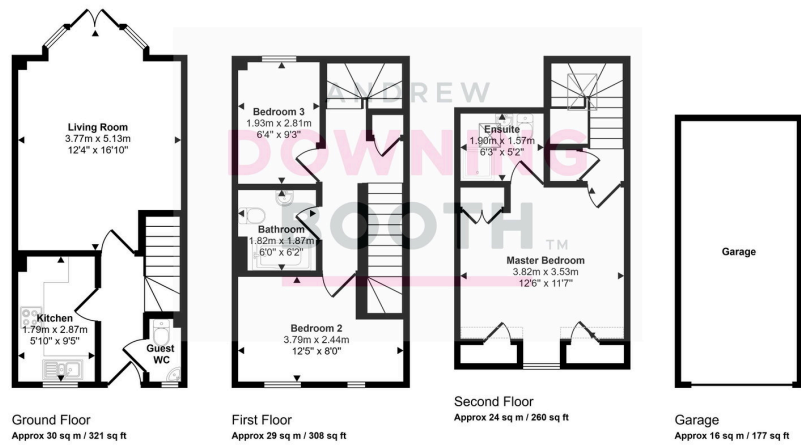
This property is ideally located within easy reach of Lichfield's excellent range of local amenities, including shops, cafés, and leisure facilities. Families will appreciate the choice of highly regarded local schools, such as Christ Church Primary School and Netherstowe High School, both within close proximity. The property also benefits from a large green opposite to the property as well a community park ideal with buyers with young children. There is also superb transport links, with Lichfield Trent Valley and Lichfield City railway stations providing direct services to Birmingham and London, while the nearby A38 and A5 offer convenient road connections. This desirable setting combines everyday convenience with easy access to both the historic city centre and surrounding countryside.

The accommodation is set across three floors, beginning with a welcoming entrance hall, a contemporary fitted kitchen, a spacious lounge, and a guest WC. The first floor offers two double bedrooms and a modern family bathroom, while the second floor is dedicated to the master bedroom, complete with en-suite facilities.

With its modern accommodation, convenient location, and well-presented living space, this property is sure to appeal to a wide range of buyers. Early viewing is highly recommended—book your appointment today.



Approx Gross Internal Area
99 sq m / 1066 sq ft



- No Upward Chain
- Beautifully Appointed Throughout With Attractive Outlook Over A Green
- Garden With Rear Access, Garage & Parking Space
- EPC Rating: C
- Three Storey, Three Bedroom Townhouse
- Modern En-Suite, Guest WC & Stunning Bathroom
- Generous Living Room With French Doors Leading Out To Garden
- Council Tax Band: C

