



Lakefield Grange, Meaux, Beverley, East Riding of Yorkshire, HU17 9SS

THERE IS ONLY ONE WORD TO DESCRIBE THE LIFESTYLE THIS SUBSTANTIAL BARN CONVERSION, STANDING IN FIVE ACRES, PROVIDES AND THAT IS STUNNING



Approached via a long treelined driveway, set in approximately five acres, this outstanding barn conversion is a completely reconstructed replica of the original. Providing a style and quality unrivalled on the market today. The extremely versatile accommodation extends to approximately 4,000 sq.ft. providing up to five bedrooms, four bathrooms, and stunning reception areas. Take a look at the photographs, you will not fail to be impressed by the lifestyle this property offers, benefiting from ground source heating making this an economical house to run.

Location

Beverley is an extremely popular Historic Market Town with a wide range of facilities and special attractions including the Minster, the Westwood and Beverley Racecourse.

The town is generally acknowledged as the main retail shopping centre of the East Yorkshire region outside Hull. Boasting several good quality restaurants and bars and a private golf club situated on the Westwood. Beverley lies approximately ten miles to the north of the City of Hull and approximately thirty miles south-east of York and is ideally located for access to the coast and the motorway network.

There is a train station within the town and a local train service connects Beverley with Hull and the East Coast resorts of Bridlington and Scarborough.

Accommodation

The accommodation is arranged on the ground and one upper floor and can be seen in more detail on the dimensioned floorplan forming part of these sale particulars and briefly comprises as follows:

Entrance Lobby

With access to a large boot/cloakroom.





WC

With vessel wash hand basin standing on a rustic hardwood plinth.

Vaulted Living Room 45'7" x 17' (13.9m x 5.18m)

To the full height of two floors, also offers scope to provide a mezzanine as provisions have been put in place if desired. There are two full height picture windows taking full advantage of the outlook and views, inset rustic brick fireplace. Open plan to the...

Living Dining Kitchen 40' x 12'6" (12.2m x 3.8m)

Includes a 20ft span of bi-fold doors, again taking full advantage of the outlook and views. The kitchen area has a stylish range of cabinets with complementing Silestone white granite worktops, matching centre island unit with inset single drainer sink, two built-in ovens with steam oven facility, four ring hob plus wok burner. Open to a prep kitchen with additional single drainer sink unit, dishwasher and wine refrigerator.



Inner Lobby

Gives access to the ...

Master Bedroom Suite 25'7" x 11'10" (7.8m x 3.6m)

Comprising combined master bedroom and dressing room. With French door and full length window, enjoying the open aspect and views. The dressing area has a range of rustic mirror fronted wardrobes and connecting door to the ...

En-suite Bathroom

Featuring a stylish five piece suite comprising free standing bath in a copper finish, twin porcelain wash stand, independent shower cubicle and high level w.c.

Inner Hall 34'6" x 5'8" (10.52m x 1.73m)

Giving access to the ...

Utility Room 15'2" x 10'1" (4.62m x 3.07m)

Includes a range of fitted cabinets and Belfast sink with plumbing for an automatic washing machine. Internal access to the garage.

Bedroom 4 14'6" x 8'6" (4.42m x 2.6m)

Bedroom 5 17'7" (5.36) x 15' (4.57) narrowing to 10'8" (3.25)

Currently used a gymnasium with double French doors to the side garden.

Family Bathroom

Includes a four piece suite with complementing tiling comprising free standing bath, high level w.c., wash hand basin and independent shower cubicle.

First Floor Landing

Bedroom 2 26'6" x 14'9" (8.08m x 4.5m)

Would also make an excellent alternative master bedroom suite. Large walk-in wardrobe.



En-suite Shower Room

Half-tiled complementing a four piece suite comprising free standing bath, high level w.c., wash hand basin and independent shower cubicle plus heated towel rail.

Bedroom 3 15' x 14'7" (4.57m x 4.45m)

Large walk-in wardrobe.

En-suite Shower Room

Includes a shower cubicle, pedestal wash hand basin and high level w.c. plus heated towel rail.

Outside

The property is approached via a tree lined driveway approximately 200 yards long, serving only two properties terminating in two parking areas, providing multiple parking and turning space. Integral garage 15' x 15'.

There is a large enclosed courtyard with access to the plant room and large store, as shown on the floorplan.

A gravelled driveway extends to the side of the property providing access to the rear which opens out into beautifully laid out and landscaped grounds.

Leading from the house and kitchen is a raised outdoor entertaining area with a multitude of ornamental shrubs and plants.

The elevated position allows delightful views of the grounds.

Situated within the main paddock area is a large steel framed timber barn with overhang to the front providing an additional outdoor covered area with cook station.

The gardens extend to the opposite side which includes a wildlife pond and a large timber shelter/store.

Agents Note

The agent is aware of restrictions connected to this property. Please contact the office for more information.

Services

Mains electricity is connected to the property, water is provided by a private borehole which serves Lakefield Grange and the one neighbouring property. Drainage is by way of sewage treatment plant.



Central Heating

The property has the benefit of a ground source heating system, underfloor to the ground floor and panelled radiators to the first floor.

Council Tax

Council Tax is payable to the East Riding Of Yorkshire Council. From verbal enquiries we are advised that the property is shown in the Council Tax Property Bandings List in Valuation Band G.*

Fixtures & Fittings

Certain fixtures and fittings may be purchased with the property but may be subject to separate negotiation as to price.

Disclaimer

The agent has not had sight of confirmation documents and therefore the buyer is advised to obtain verification from their solicitor or surveyor.

Viewings

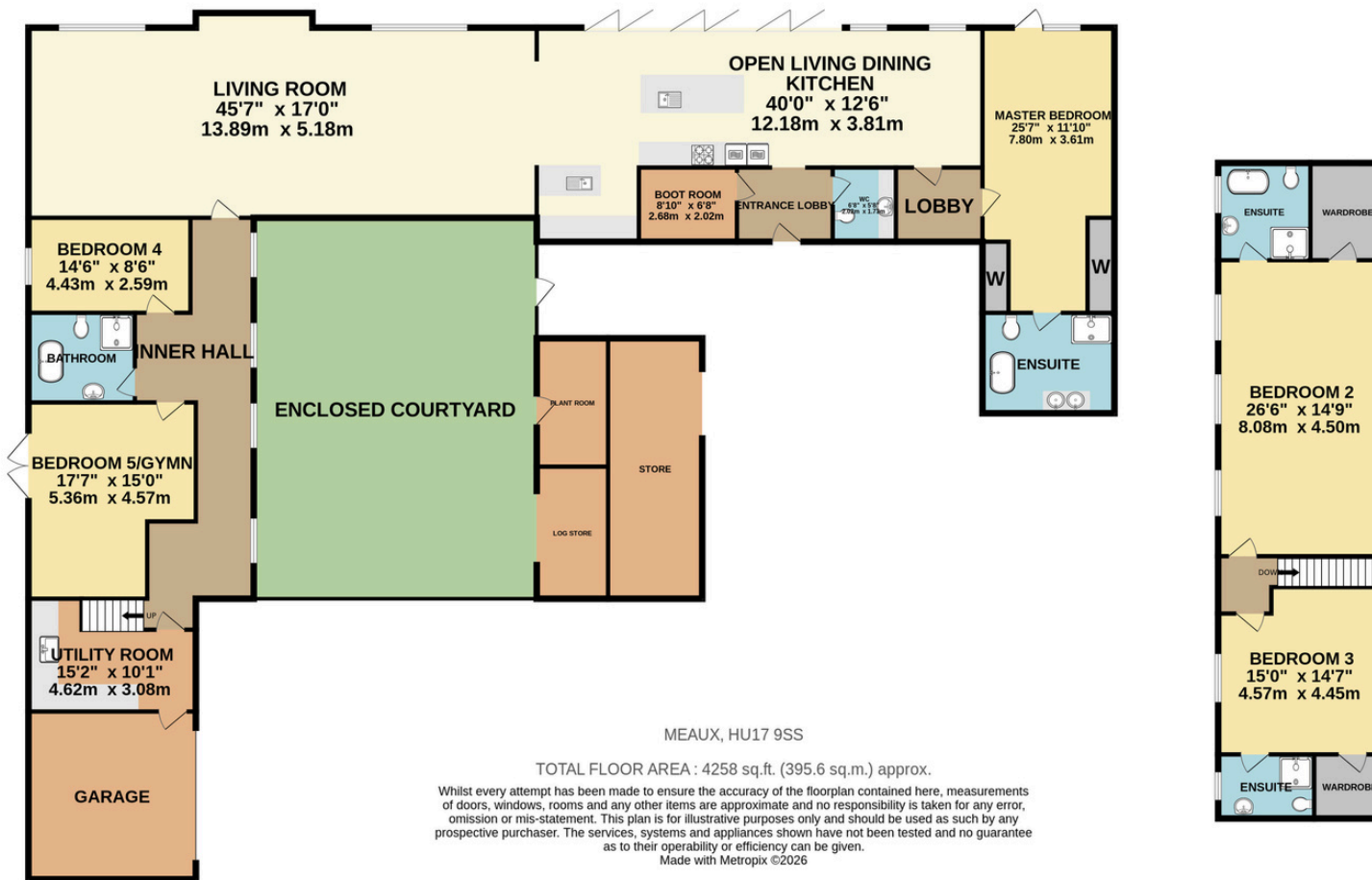
Strictly by appointment with the sole agents.

Mortgages

We will be pleased to offer independent advice regarding a mortgage for this property, details of which are available from our Fine and Country Office on 01482 420999. Independent advice will be given by Licensed Credit Brokers. Written quotations on request. Your home is at risk if you do not keep up repayments on a mortgage or other loan secured on it.

Important Buyer Information:

To progress your offer, we are legally required to verify your identity, confirm your source of funds, and assess affordability. This process incurs a fee of £50 (inc. VAT) for sole buyers, or £100 (inc. VAT) for joint buyers, regardless of the number of individuals involved.



8 Kingston Rd, Willerby, Hull, HU10 6BN

Tel: 01482 420999 E-mail: eastyorkshire@fineandcountry.com

1 Saturday Market, Beverley, HU17 0BB

Tel: 01482 887770 E-mail: eastyorkshire@fineandcountry.com



Each Fine & Country office is independently owned and operated under license.

Fine & Country Willerby and Beverley trade under Beercocks Limited. Beercock for themselves and for the vendors or lessors of this property whose agent they are given notice that (i) the particulars are set out as a general outline only for the guidance of intending purchasers or lessees and do not constitute, nor constitute part of an offer or contract; (ii) all descriptions, dimensions, references to condition and necessary permissions for use and occupation and other details are given in good faith and are believed to be correct but any intending purchasers or tenants should not rely on them as statements or representations of fact but must satisfy themselves by inspection or otherwise as to the correctness of each of them; (iii) no person in the employment of Beercocks has any authority to make or give any representation or warranty whatever in relation to this property. The fixtures, fittings and appliances, electrical and plumbing installation or central heating systems have not been tested and therefore no guarantee can be given that they are in working order, nor has any type of survey been given that they are in working order, nor has any type of survey been undertaken on this property. Photographs are reproduced for general information and it cannot be inferred that any item shown is included in the sale. Drawings, sketches and plans are provided for general guidance and are not to scale. LOCATION MAP - (c) OpenStreetMap contributors, CC BY-SA

To find out more or to arrange a viewing please contact 01482 420999 or visit www.fineandcountry.com

