



ROEHAMPTON CLOSE, SW15

£675,000

1930s Art Deco apartment

Two double bedrooms

Reception room

Dining room

Eat in kitchen

Barnes

@marshandparsons
marshandparsons.co.uk

MARSH &
PARSONS



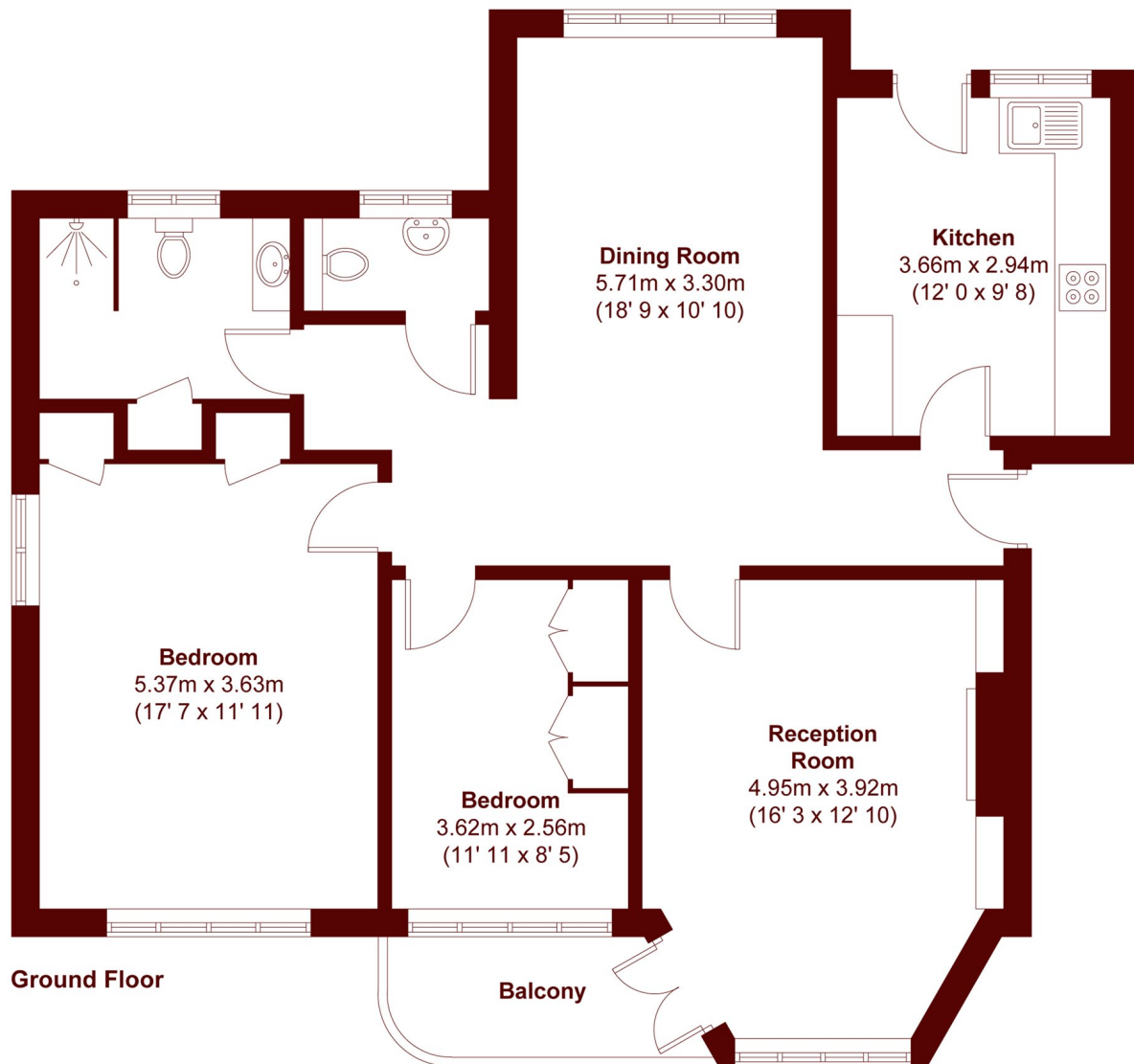
ABOUT THE PROPERTY

Marsh & Parsons are delighted to bring to the market this two bedroom apartment which is located on the ground floor of this elegant 1930s Art Deco estate, in the highly sought after development of Roehampton Close which is located moments away from the Roehampton Sports Club.

The apartment is peppered with period features and benefits from the original hallway parquet flooring plus timber oak engineered boards and extends over 1000 square feet for comfortable lateral living with direct access to the gardens. Comprising of two bedrooms which are both furnished with fitted cupboards, a large - bathroom, cloakroom, eat-in kitchen, a spacious reception



STEP INSIDE ROEHAMPTON CLOSE



APPROX. GROSS INTERNAL FLOOR AREA 1020 SQFT / 94.8 SQM
APPROX. GROSS EXTERNAL BALCONY AREA 43 SQFT / 4 SQM

Barnes & East Sheen
020 8563 8333

Energy Rating: We aim to make our particulars both accurate and reliable. However, they are not guaranteed; nor do they form part of an offer or contract. If you require clarification on any points then please contact us, especially if you're traveling some distance to view. Please note that appliances and heating systems have not been tested and therefore no warranties can be given as to their good working order

**MARSH &
PARSONS**