

8 Lightning Lane, Derby, DE74 2WA

£475,000

Elegant 4-Bedroom Detached Family Home with Double Garage & Coach House

Situated on a desirable cul-de-sac in Castle Donington, this beautifully presented four double bedroom home offers spacious and versatile living accommodation, finished to a high standard throughout.

The property benefits from a large driveway, double garage with up-and-over door, and a very unique coach house above - with potential for annexe use (subject to planning) - providing excellent parking, storage, or potential for a variety of uses.

Inside, the welcoming entrance hall leads to a bright dual-aspect living room, featuring a bay window to the front and double doors opening onto the rear garden. There is also a dining room with bay window to the front elevation, along with a separate snug/office—ideal for home working.

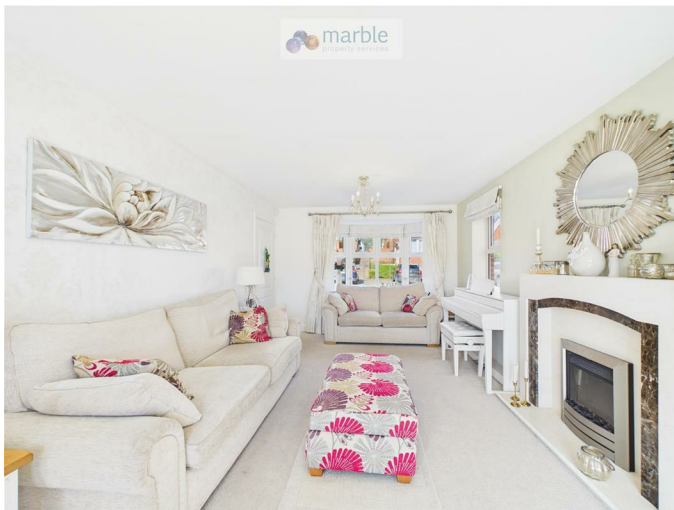
The kitchen is fitted with modern gloss units and integrated appliances including washing machine, fridge/freezer and dishwasher. French doors open onto the rear garden, creating a seamless indoor-outdoor flow.

Entrance Hallway



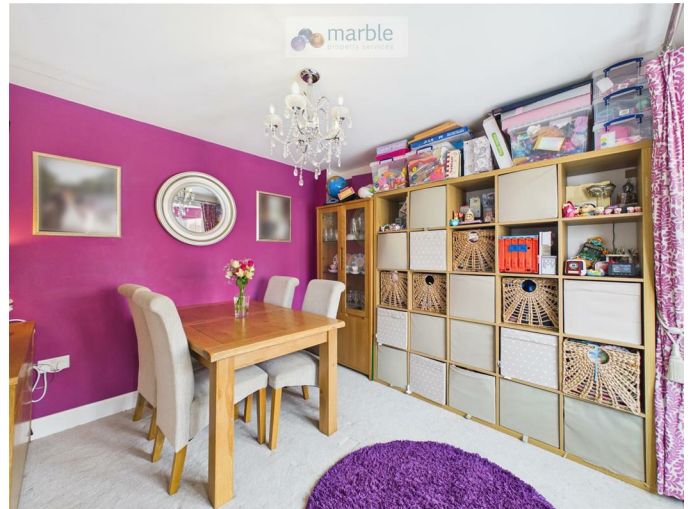
Enter via composite front door - finished with white tiled flooring, featuring a staircase rising to the first floor, wall-mounted thermostat, and providing access to all ground floor accommodation.

Living Room



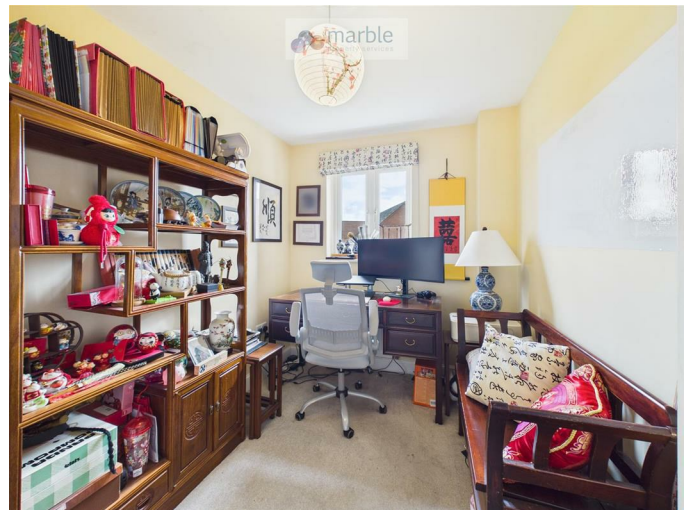
A bright dual-aspect reception room featuring a bay window to the front elevation, side aspect window, and French doors opening onto the rear garden. Finished with carpeted flooring, a gas fire, and a gas central heating radiator.

Dining Room



Featuring a bay window to the front elevation, carpeted flooring, and a gas central heating radiator.

Home Office/Snug

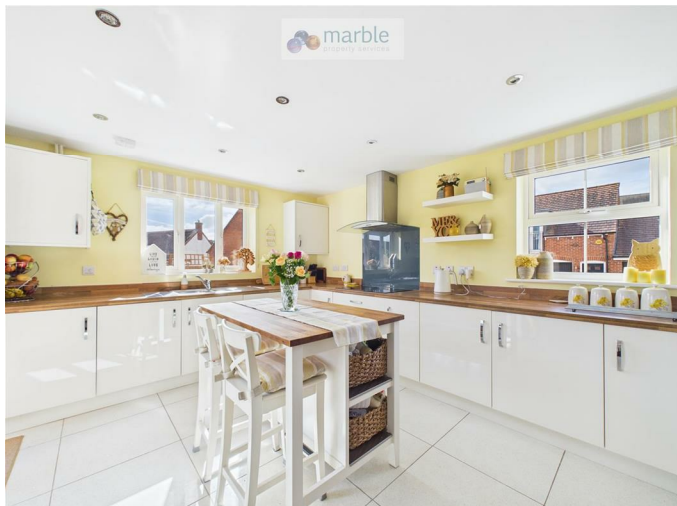


Finished with carpeted flooring, featuring a window to the rear elevation and a gas central heating radiator.

WC

Finished with tiled flooring, comprising a low-level WC, wall-mounted hand wash basin, and a gas central heating radiator.

Kitchen

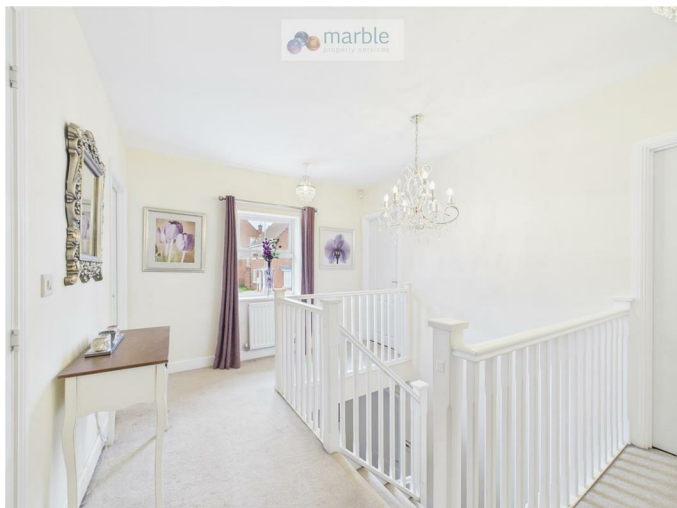


A modern high gloss kitchen finished with tiled flooring and complemented by wood-effect work surfaces.

Fitted with a range of wall and base units with drawers, alongside integrated appliances including a washing machine, dishwasher, fridge/freezer, and high-level oven with grill. The space also features an induction hob with glass splashback and extractor above.

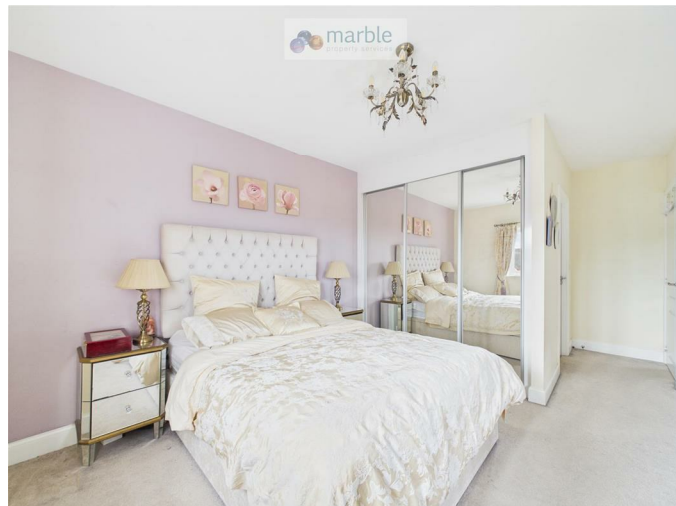
Windows to the side and rear elevations, and French doors opening onto the garden. Complete with a gas central heating radiator.

First Floor Gallery Landing



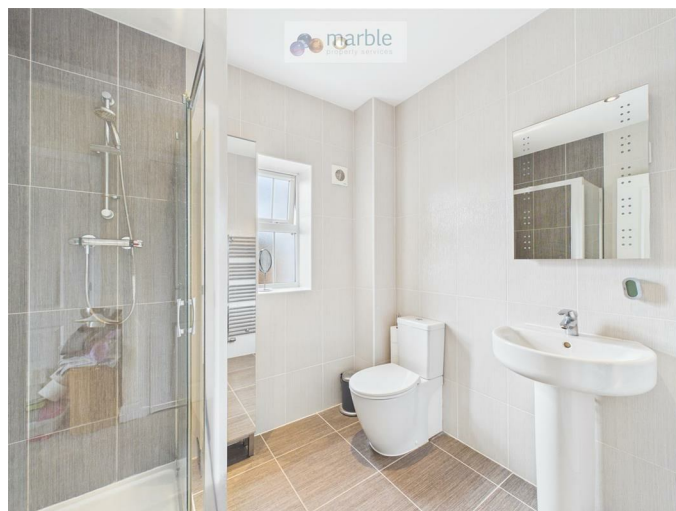
Extremely spacious gallery landing with carpeted flooring and access to upstairs rooms with front elevation window and gas central heating radiator.

Principle Bedroom



A spacious double room finished with carpeted flooring, featuring fitted sliding mirrored wardrobes and additional storage within the alcove. With windows to the rear and side elevations, a gas central heating radiator, and access to the en-suite bathroom.

En-Suite



Fully tiled walls and flooring, comprising a shower enclosure with mixer rainfall shower, pedestal wash hand basin, and low-level WC. Complete with a heated towel rail, mirror with shaving points, and a frosted window to the side elevation.

Bedroom 2



A well-proportioned room with carpeted flooring, a gas central heating radiator, and a window to the rear elevation.

Bedroom 4



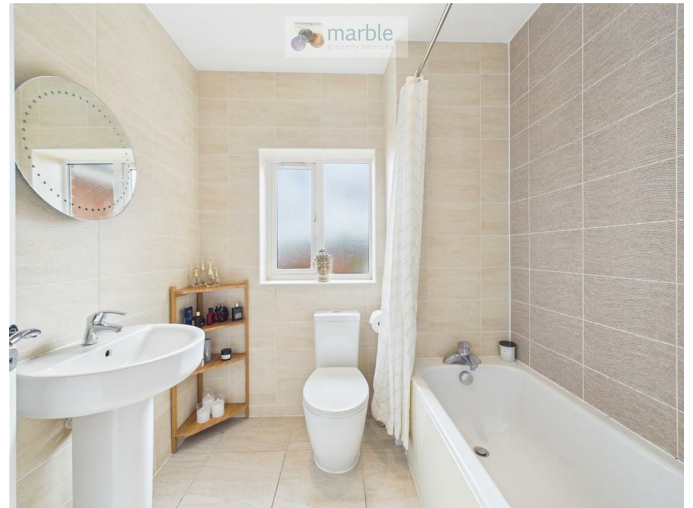
A comfortable room finished with carpeted flooring, featuring a gas central heating radiator and a window to the front elevation.

Bedroom 3



Another well-proportioned room finished with carpeted flooring, featuring a gas central heating radiator and a window to the front elevation.

Bathroom



A fully tiled suite comprising a bath with shower and curtain, pedestal wash hand basin, and low-level WC. Complete with a heated towel rail, wall-mounted mirror, and a frosted window.

Outside



To the rear, the garden features a patio area adjoining the property, leading onto a lawned section, creating an ideal space for family use and outdoor entertaining. The property benefits from a driveway, double garage and coach house.

Coach House

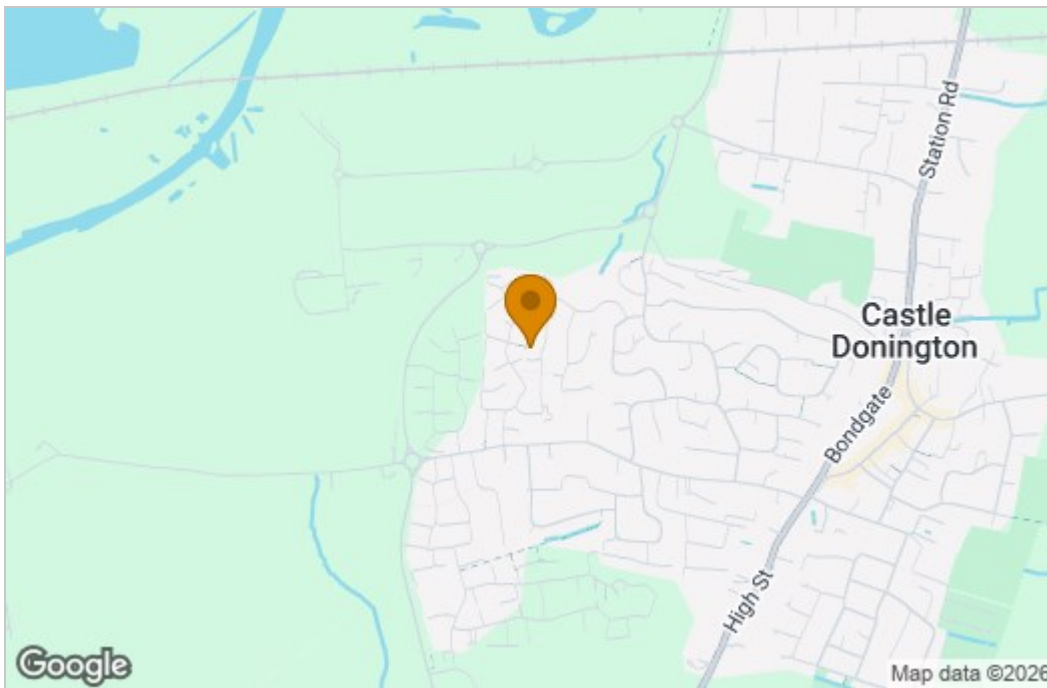


Accessed via a composite entrance door with carpeted stairs rising to the first floor. The main space features double doors to both the front and rear elevations, wooden flooring, and vaulted ceilings, creating a bright and open feel. Currently utilised as a home office, gym, snug, and games room, this highly versatile space offers a range of potential uses to suit a variety of needs.

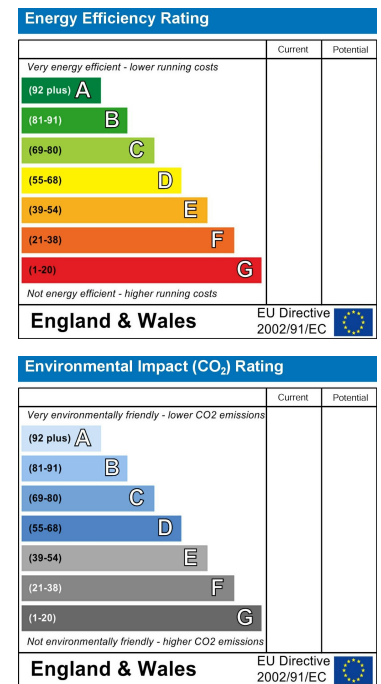
Floor Plan



Area Map



Energy Efficiency Graph



These particulars, whilst believed to be accurate are set out as a general outline only for guidance and do not constitute any part of an offer or contract. Intending purchasers should not rely on them as statements of representation of fact, but must satisfy themselves by inspection or otherwise as to their accuracy. No person in this firm's employment has the authority to make or give any representation or warranty in respect of the property.