



Nightingale Avenue, Ottershaw, KT16 0SA





This beautifully presented five-bedroom family home offers stylish, flexible accommodation across three floors.

The heart of the home is a bright kitchen/dining room, featuring French doors to the garden and two skylights that flood the space with natural light—ideal for entertaining. The modern kitchen includes sleek cabinetry, integrated appliances and a breakfast bar seating three.

To the front, a formal reception room with a bay window provides an elegant living space. A cloakroom and hallway storage complete the ground floor.

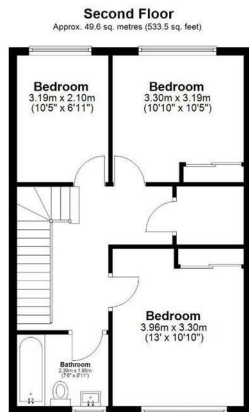
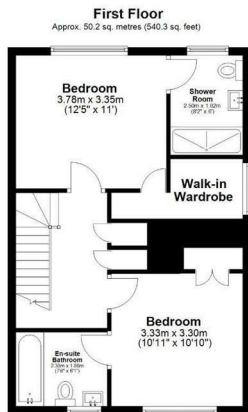
On the first floor, the principal bedroom benefits from a dressing room and contemporary en suite, alongside a well-appointed guest suite with en suite, built-in storage and a large floor-to-ceiling window.

The second floor offers three further bedrooms, two with built-in storage, served by a family bathroom.

Outside, the easy maintenance rear garden is designed for both relaxation and entertaining with, with a patio spanning the rear, and a lawn with side access to the garage which has been divided to give both a storage area and family snug / bar.



Freehold



Total area: approx. 181.0 sq. metres (1948.4 sq. feet)

This floor plan has been created by a third party and should be used as a general outline for guidance only. Any areas, measurements or distances quoted are approximate and any intending purchaser or lessee should satisfy themselves by inspection, searches, enquiries and/or full survey as to the correctness of each statement. We accept no responsibility or liability for any loss whatsoever that may arise as a result of this plan and the information contained within.

© @moderphoto | www.moderphoto.co.uk
Plan produced using PlanIt®...

Nightingale Road Lyne



EPC Rating: 85 B





Grants Homes 60 Church Street, Weybridge, Surrey, KT13 8DL
T: 01932 858885 E: addestone@grantshomes.co.uk

