



Connells

Whinbush Road
Hitchin



Property Description

A three bedroom period property situated in this rarely available location close to Hitchin town centre and the station.

The downstairs accommodation comprises separate reception rooms, a kitchen and family bathroom. Upstairs are three excellent sized bedrooms.

This fabulous bay-fronted property also offers excellent potential to improve and extend, a large rear garden and the the rare benefit of its own side access.

Whinbush Road is a quiet location equidistant to the town and station and offers permit only residents parking.

Ground Floor

Lounge

Door and double glazed bay window to front, electric fireplace, wood flooring and radiator.

Dining Room

Single glazed sash window to rear aspect, original fireplace, built-in cupboard housing fuse box, wood flooring and radiator.

Kitchen

Fully fitted kitchen with double glazed window to side. A range of wall and base units, work surfaces with splashback tiling, one and a half bowl stainless steel sink and drainer, cooker point, space for fridge/freezer, boiler, plumbing for washing machine. Spotlights, tiled flooring and door to side leading to garden.



First Floor

Landing

Doors to all first floor accommodation.

Bedroom One

Two double glazed windows to front aspect, original fireplace, built-in cupboard, loft access, wood flooring and radiator.

Bedroom Two

Double glazed window to rear aspect, wood flooring and radiator.

Bedroom Three

Double glazed window to rear aspect and radiator.

Bathroom

Double glazed window to side aspect, wash hand basin, bath with shower over, WC, partly tiled, extractor fan, tiled flooring and radiator.

Outside

Front Garden

Singled frontage with picket fence to borders and rose bushes.

Rear Garden

A good size rear garden laid to lawn with mature borders. There is a seating area to the nearside of the property and a large timber shed to the rear. Private side access.

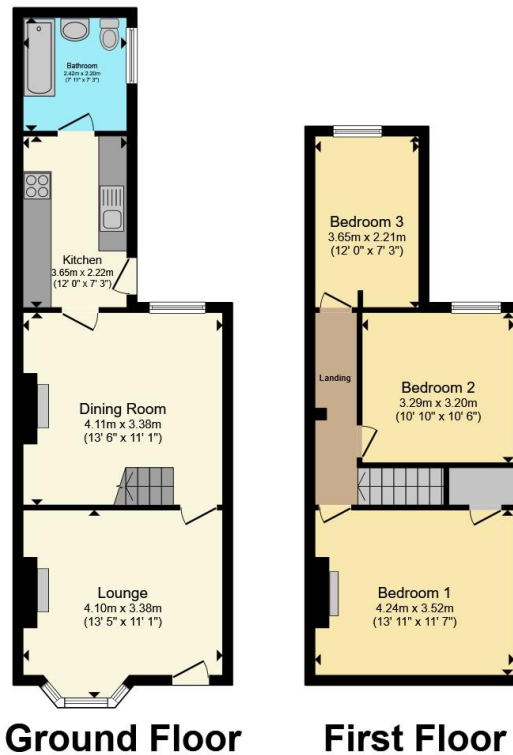
Parking

Permit on-street access.









Total floor area 88.3 m² (950 sq.ft.) approx

This floor plan is for illustrative purposes only. It is not drawn to scale. Any measurements, floor areas (including any total floor area), openings and orientation are approximate. No details are guaranteed, they cannot be relied upon for any purpose and they do not form part of any agreement. No liability is taken for any error, omission or misstatement. A party must rely upon its own inspection(s). Powered by www.propertybox.io



To view this property please contact Connells on

T 01462 437 666
E hitchin@connells.co.uk

14 High Street
 HITCHIN SG5 1AT

EPC Rating: E Council Tax Band: C

Tenure: Freehold

view this property online connells.co.uk/Property/HIT308423



1. MONEY LAUNDERING REGULATIONS Intending purchasers will be asked to produce identification documentation at a later stage and we would ask for your co-operation in order that there will be no delay in agreeing the sale. 2. These particulars do not constitute part or all of an offer or contract. 3. The measurements indicated are supplied for guidance only and as such must be considered incorrect. Potential buyers are advised to recheck measurements before committing to any expense. 4. We have not tested any apparatus, equipment, fixtures, fittings or services and it is in the buyers interest to check the working condition of any appliances.

Connells Residential is registered in England and Wales under company number 1489613, Registered Office is Cumbria House, 16-20 Hockliffe Street, Leighton Buzzard, Bedfordshire, LU7 1GN. VAT Registration Number is 500 2481 05.

See all our properties at www.connells.co.uk | www.rightmove.co.uk | www.zoopla.co.uk

Property Ref: HIT308423 - 0002