



Taylors

HALESOWEN, Pegasus Court

Offers In Region Of £185,000

🛏 1 🚿 1 🛋 1

- Super ground floor retirement apartment
- Convenient position
- Lounge with space for table
- Refitted kitchen with oven hob fridge and freezer
- Refitted shower room
- Opens onto communal gardens
- House manager
- Emergency pull cord system
- Communal Lounge and utility
- Age restriction of 60yrs



A super GROUND FLOOR RETIREMENT APARTMENT in this popular sought after and convenient location. Set in communal garden and communal parking facilities. Having good size pleasant communal entrance with entrance telephone system. Most attractively and pleasantly presented - Hall, Store Cupboard off, Good size Living Room with space for table and having double glazed door and window to outside. Refitted Kitchen with oven, hob, fridge and freezer, Double Bedroom with fitted furniture. Well fitted Shower Room. Emergency Pull cord system, House Manager, Use of Communal Lounge and Utility. Age Restriction of over 60 applies. Mains water, drainage and electricity connected. Tenure Leasehold, Lease 125 yrs from 2001 [100yrs approx remaining]. Ground rent £399 from 1st January 2026, escalating by £100 every 25yrs. Service charge 2025 £3441.36 revised annually. Council tax band C. EPC C. Broadband/Mobile coverage:<https://checker.ofcom.org.uk/en-gb/broadband-coverage>. Construction traditional. Long term flood risk - surface water high rivers very low.

Communal Entrance With entrance telephone security system

Ground floor Apartment No 5 comprising

Attractive Hall With Deep Store Cupboard / Airing Cupboard off

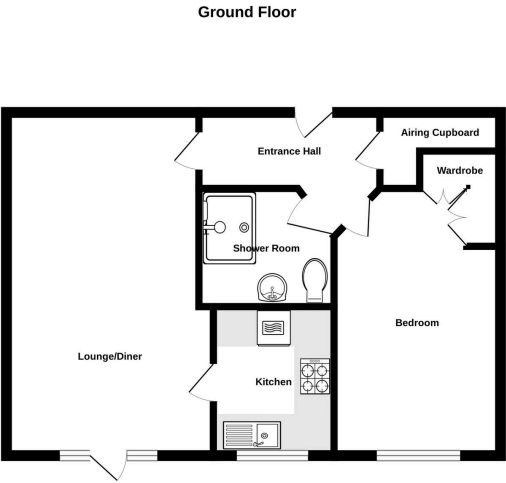
Comfortable Lounge with Dining Area - 5.84m x 3.2m (19'2" x 10'6") Having attractive fireplace with electric fire, wall lights and ceiling lights. PVC double glazed window and door looking out pleasantly to the communal gardens

Refitted Kitchen - 2.31m x 1.96m (7'7" x 6'5") With a good range of modern floor and wall cupboards, integral oven, hob and cooker hood, fridge and freezer

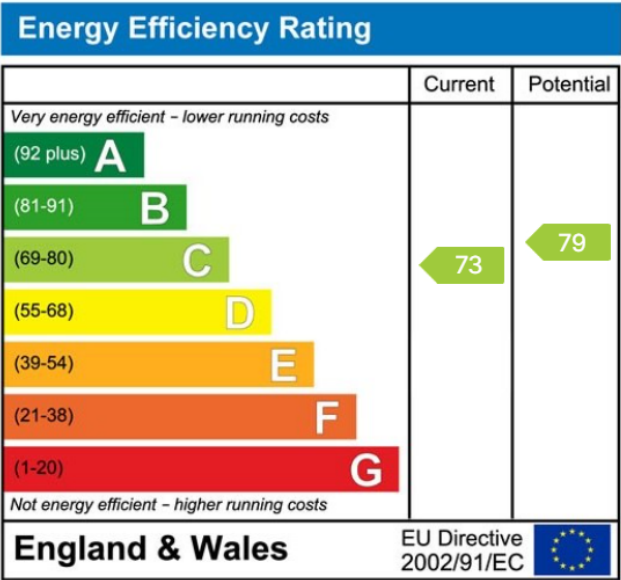
Double Bedroom - 4.24m x 2.74m (13'11" plus wardrobes x 9'0") Excellent range of fitted wardrobes and sidedrawer unit

Attractive Shower Room - 2.18m x 1.96m (7'2" x 6'5") Having good size shower cubicle, handbasin and WC in unit with cupboards beneath. Electric towel rail and heater. Fitted tall cupboard





Measurements are approximate. Not to scale. Illustrative purposes only.
Made with Metronom (2022)



MISREPRESENTATION ACT 1967: These particulars do not constitute any part of an offer or a contract. Whilst every care is taken to ensure accuracy, no responsibility for errors or misdescription is accepted. Any intending purchaser must satisfy themselves by inspection or otherwise as to the correctness of each of the statements in these particulars. The vendor does not make nor give, and neither Taylors nor any person in their employment has any authority to make or give any representation or warranty whatsoever about this property. As the seller's estate agents, we are not surveyors or conveyancing experts, and we cannot comment on the property's condition or issues relating to the title or other legal issues that may affect this property unless we have been made aware of such matters. Interested parties should employ professionals to make such enquiries before making transactional decisions. **EPC:** can be supplied free of charge. **CONSUMER PROTECTION REGULATIONS (2008):** These particulars have been prepared with care and approved by the vendors (where possible) but are intended as a guide only, with measurements being approximate and usually the maximum size, which may include alcoves, recesses or otherwise as described, and you must NOT rely on them for any other purpose. The appearance of an item in any photograph does not mean that it forms part of the property or sale price. **FIXTURES AND FITTINGS:** Only those items specifically mentioned in these sales particulars are included in the sale price. Taylors have NOT tested any apparatus, equipment, fixture or fitting and cannot verify they are in working order or fit for their purpose. **PLANNING PERMISSION / BUILDING REGULATIONS:** Any reference to the property being extended, altered or converted in any way does not infer that planning permission or building regulations have been granted or applied for, nor do Taylors accept any responsibility for such not having been obtained. **FLOOR PLAN:** This plan is for illustrative purposes only. The services, systems and appliances shown have not been tested and no guarantee as to their operability or efficiency can be given.