

BRENNAN

BESPOKE

£200,000

Carsington Close

Kettering, NN16 8LS

If you want a home that's already in a great position for day-to-day convenience, Carsington Close should be top of your list. Tucked away within a quiet and popular cul-de-sac, this two-bedroom semi-detached property is offered with no onward chain and is particularly well located for those needing easy access to Kettering General Hospital, which is just a short walk away. The accommodation provides a practical layout for first-time buyers, downsizers or investors, with a comfortable lounge and a kitchen/dining room that offers a sociable space for everyday living and mealtimes. Upstairs, there are two bedrooms and a family bathroom, creating straightforward and easy-to-maintain accommodation. Outside, the property benefits from a side driveway providing off-road parking, while the rear garden is private and mainly laid to lawn with established shrubs, offering a pleasant outdoor space for relaxing, entertaining or low-maintenance gardening.

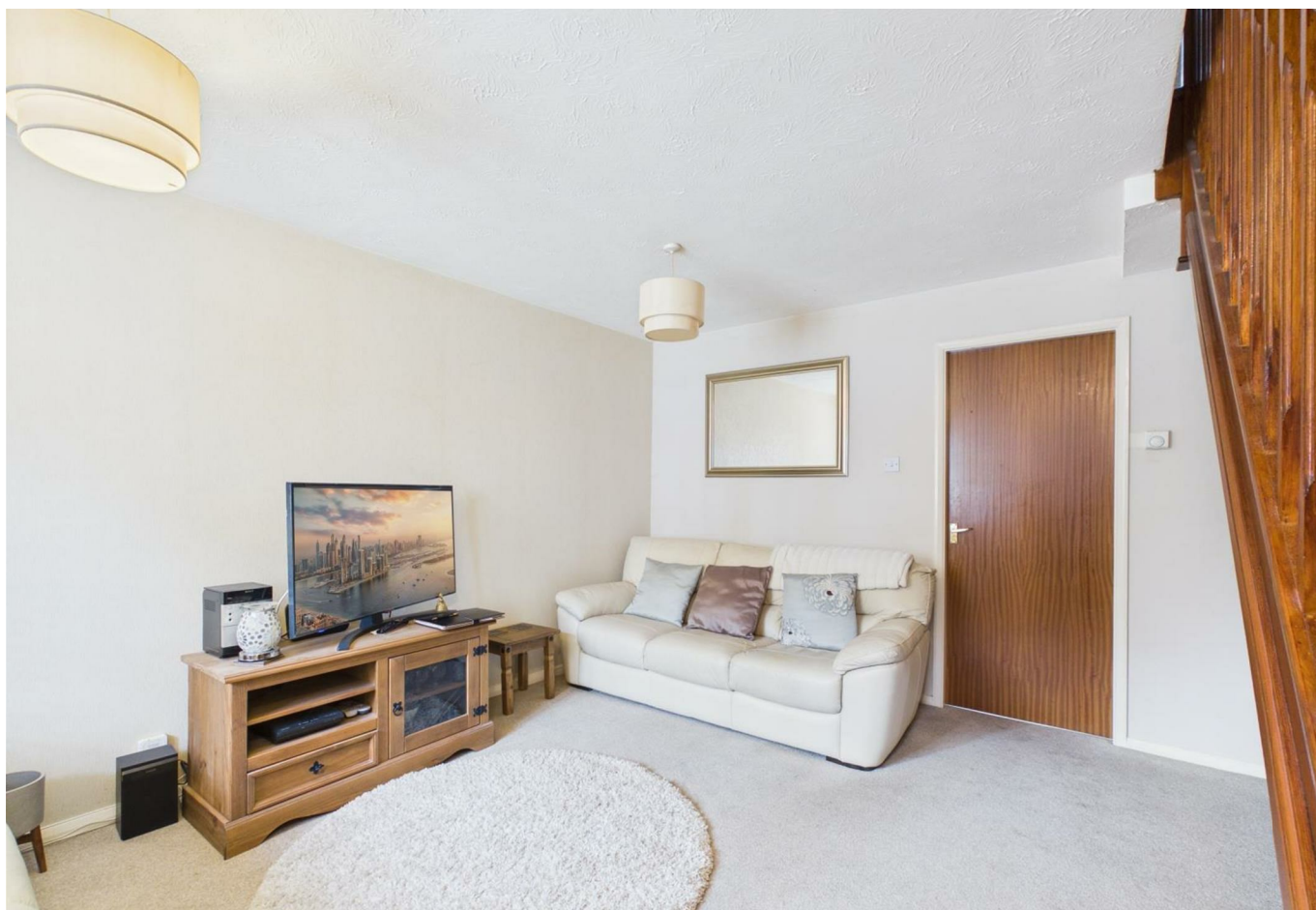
2



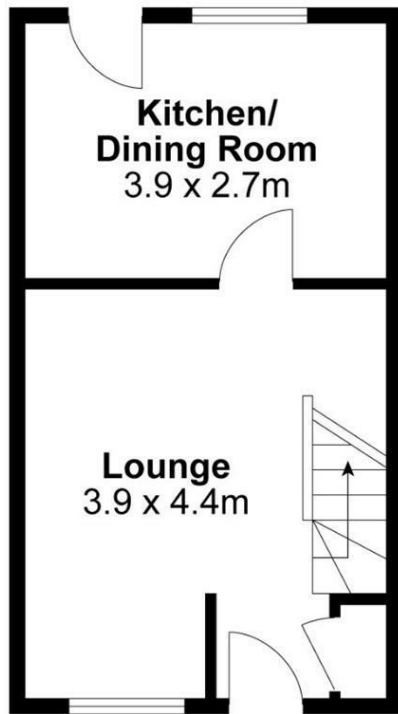
1



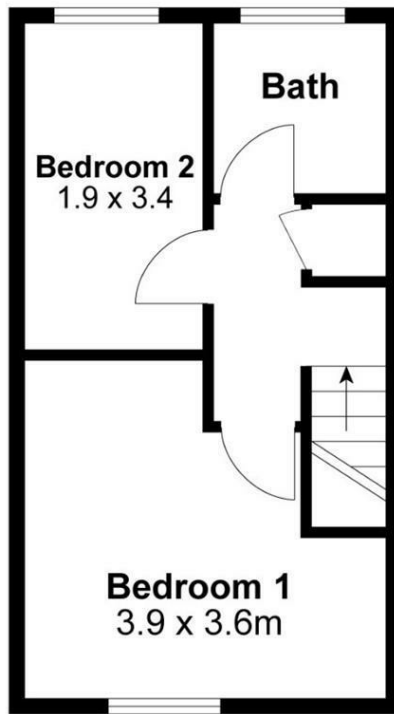
1







Ground Floor



First Floor

For identification only not to scale

Internal Area Approx. : 56m²

BRENNAN
BESPOKE

LOCAL AUTHORITY
North Northamptonshire

TENURE
Freehold

COUNCIL TAX BAND
B

VIEWINGS
By prior appointment only

Energy Efficiency Rating		Current	Potential
<i>Very energy efficient - lower running costs</i>			
(92 plus)	A		
(81-91)	B		
(69-80)	C		
(55-68)	D		
(39-54)	E		
(21-38)	F		
(1-20)	G		
<i>Not energy efficient - higher running costs</i>			
England & Wales		EU Directive 2002/91/EC	

Agents Note: Whilst every care has been taken to prepare these particulars, they are for guidance purposes only. All measurements are approximate and are for general guidance purposes only and whilst every care has been taken to ensure their accuracy, they should not be relied upon and potential buyers/tenants are advised to recheck the measurements

BRENNAN
BESPOKE

OFFICE ADDRESS
BRENNAN BESPOKE
2 The Tithe Barn Glendon Lodge Farm
Glendon
Kettering
Northamptonshire
NN14 1QF

OFFICE DETAILS
01536 904400
info@brennanbespoke.co.uk
<https://www.brennanbespoke.co.uk>