



Belsize Grove, NW3

£299,950

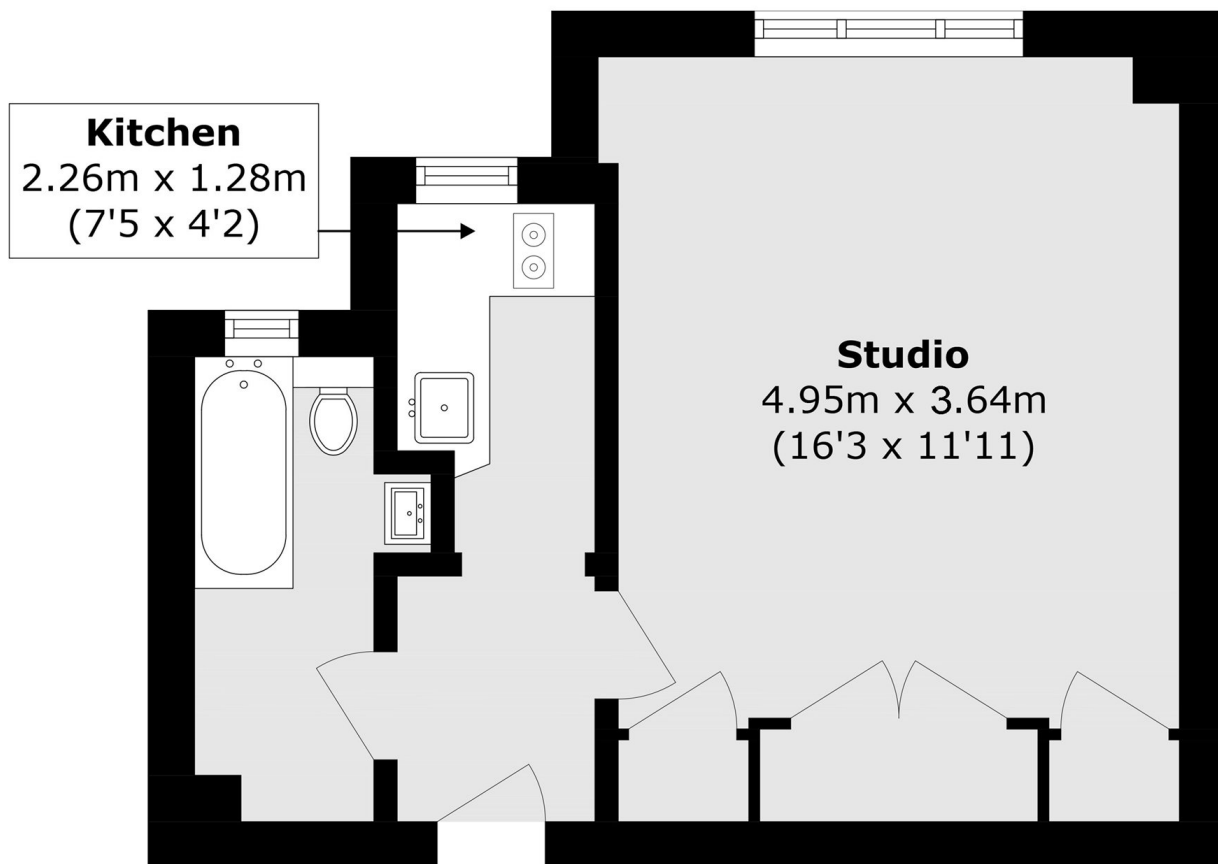
Set on the third floor of a sought-after 1930s development, this bright studio apartment features a spacious south-facing living area with fitted storage, a modern kitchen, and a generous bathroom. Further benefits include lift access, communal gardens, and a daytime porter.

Ideally located just moments from Belsize Park underground station and an excellent selection of popular shops, cafés, and restaurants. The expansive green spaces of Hampstead Heath and Primrose Hill are also within easy reach.

Features

- Top Floor
- Lift
- Beautifully Maintained
- Communal Gardens
- Porter Service
- Prime Central Location

Belsize Grove, London, NW3



Total area (approx.): 27.9 sq. m (300.0 sq. ft)