



# Romney House

47 Marsham Street, SW1P

£3,600 per month  
(£830.77 per week)

Modern 2-bedroom 5th floor apartment with lift access, featuring bright interiors and a private balcony. Ideally located near the shops, cafés, and restaurants of Victoria Street and Westminster.



# Romney House

47 Marsham Street, SW1P

-



Long Let– Situated just steps away from the trendy shops and eateries of Victoria Street, this stylish 2-bedroom apartment on the 5th floor (with lift access) boasts bright, spacious interiors and a private balcony for relaxing or entertaining.

Located on Marsham Street, you'll be perfectly positioned to enjoy Westminster's charming cafés, galleries, and a vibrant mix of boutiques, bars, and restaurants nearby.

---

**Minimum Term:** months  
**Deposit Required:** £0.00  
**Local Authority:**  
**Council Tax Band:**  
**EPC Rating:** To be confirmed

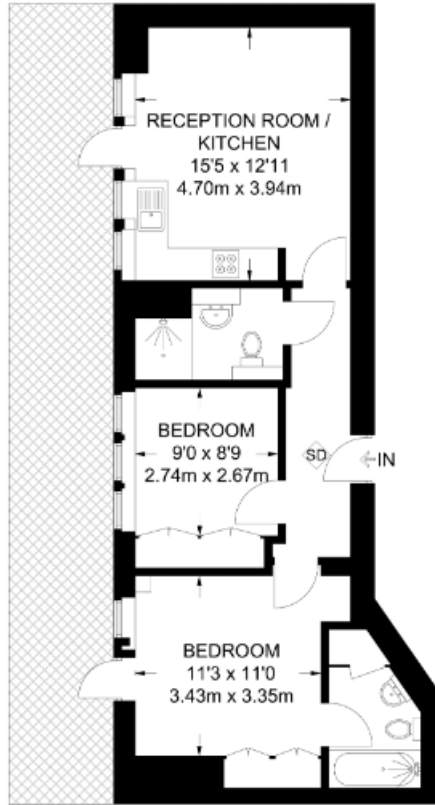
---

### *Chestertons Westminster & Pimlico Lettings*

105 Wilton Road  
London  
SW1V 1DZ  
westminster@chestertons.co.uk  
02030408220  
chestertons.co.uk

Additional tenant charges apply (fees apply to non-AST tenancies only)  
Tenancy Agreement Fee: £300  
References per Tenant/Guarantor: £60  
Inventory check (approx. £100 – £250 inc. VAT)  
[chestertons.co.uk/property-to-rent/applicable-fees](http://chestertons.co.uk/property-to-rent/applicable-fees)

APPROXIMATE FLOOR AREA = 667 SQ FT / 62 SQ M  
INCLUDING LIMITED USE AREA (17 SQ FT / 1.6 SQ M)



FIFTH FLOOR

