



RAVENSBURY TERRACE, SW18

£1,250,000

- Victorian freehold house
- Fully extended
- Four bedrooms
- Popular location
- Excellent condition
- Energy rating: D





ABOUT THE HOME

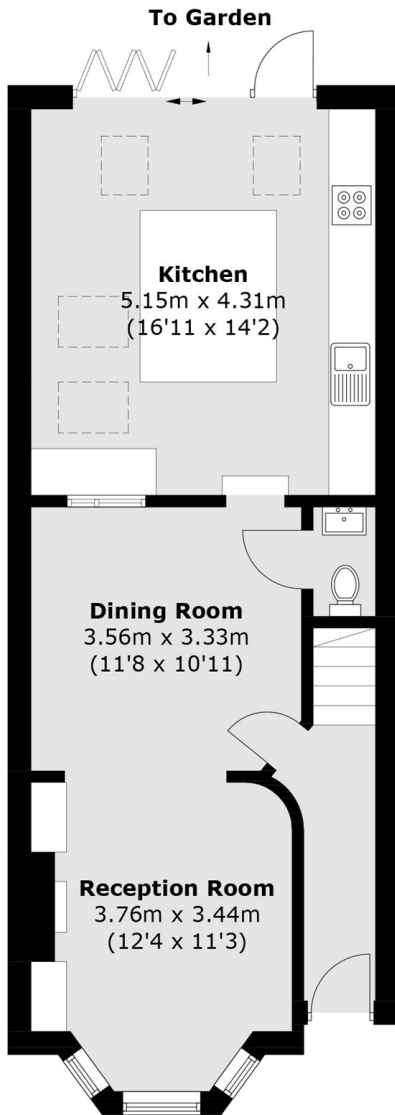
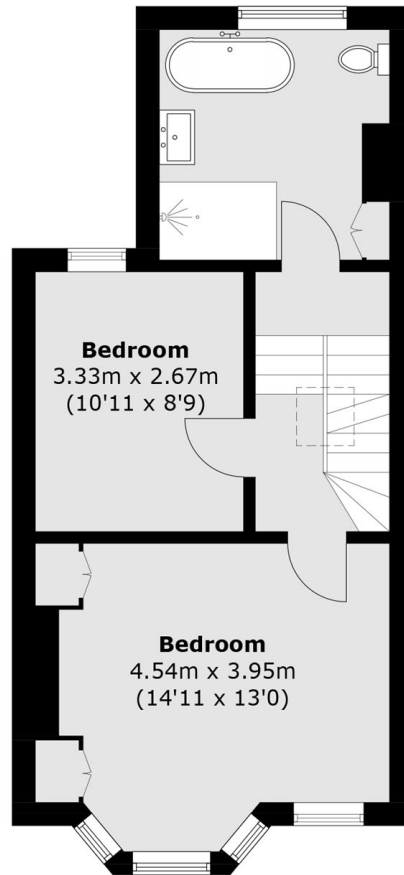
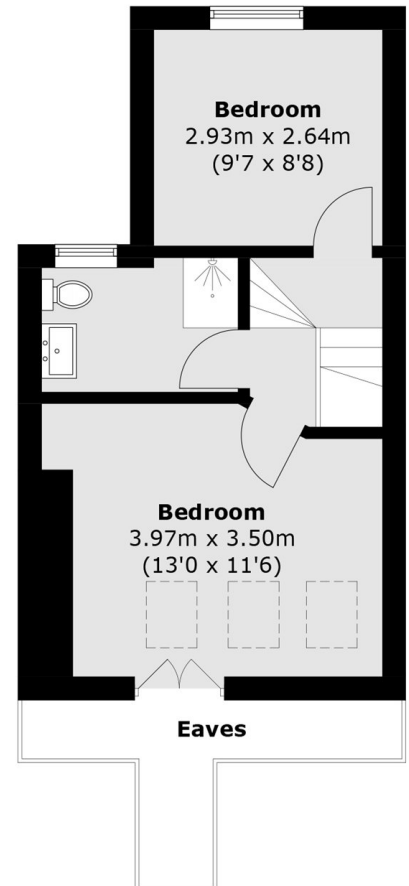
A truly wonderful, four bedroom, Victorian family home with generous garden, located in a prime location.

The property is mid terrace and has been fully extended into the loft and at the rear to create a fantastic living space. Accommodation comprises; a welcoming entrance hall with a downstairs W/C and a well presented double reception room. The kitchen is a true centrepiece, offering an array of integrated appliances. The kitchen is open plan to a dining room which creates a wonderful entertaining space by having bi-folding doors lead out to a beautiful garden. On the first floor there is a modern family bathroom and three well proportioned bedrooms. Stairs lead to the second floor where you'll find a principle bedroom boasting ample storage, a Juliet balcony and a second bathroom.

Ravensbury Terrace is a highly sought after road in Earlsfield, being well placed for some of the most desirable schools in the area and only 0.2 miles from Earlsfield mainline station. Garratt Lane with its vast array of shops, bars and restaurants is within easy reach. The green open spaces of King George's Park is close by.






Ground Floor

First Floor

Second Floor

Total area (approx.): 126.8 sq. m (1,364.8 sq. ft)
(Excluding Eaves)

JACKSONS EARLSFIELD

372-374 Garratt Lane,
Earlsfield, London, SW18 4ES
Sales: 020 8971 7979
Lettings: 020 8971 7070

Energy Rating: D We aim to make our particulars both accurate and reliable. However they are not guaranteed; nor do they form part of an offer or contract. If you require clarification on any points then please contact us, especially if you're traveling some distance to view. Please note that appliances and heating systems have not been tested and therefore no warranties can be given as to their good working order.