



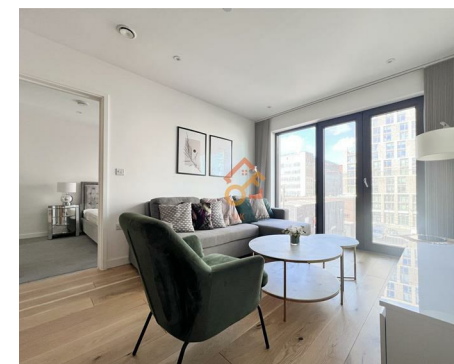
Let **UK** Home

1 Bedrooms

Flat

**Located
in Birmingham**

£1,150 Per Month



pmadmin@letukhome.co.uk

<https://www.letukhome.co.uk/>

0121 828 8955



36 Windmill Street Birmingham

B1 1FW



Let UK Home are excited to offer this spectacular one bedroom property in The Axiom, located in a prime city centre location in Birmingham.

The flat comprises a spacious open kitchen with a stylishly attached dining area, a magnificent living room, one bright bedroom and one modern bathroom.

The Axiom is a high specification apartment situated within the sought after location of Windmill Street in Central Birmingham. Each apartment enjoys intelligent and sophisticated designs allowing for maximum space and natural light. Concierge is available on site, 7 days a week. And this development also has a communal terrace space for a more comfortable living experience.

The development is close to several well-known universities such as the University of Birmingham, Aston University, and Birmingham City University.

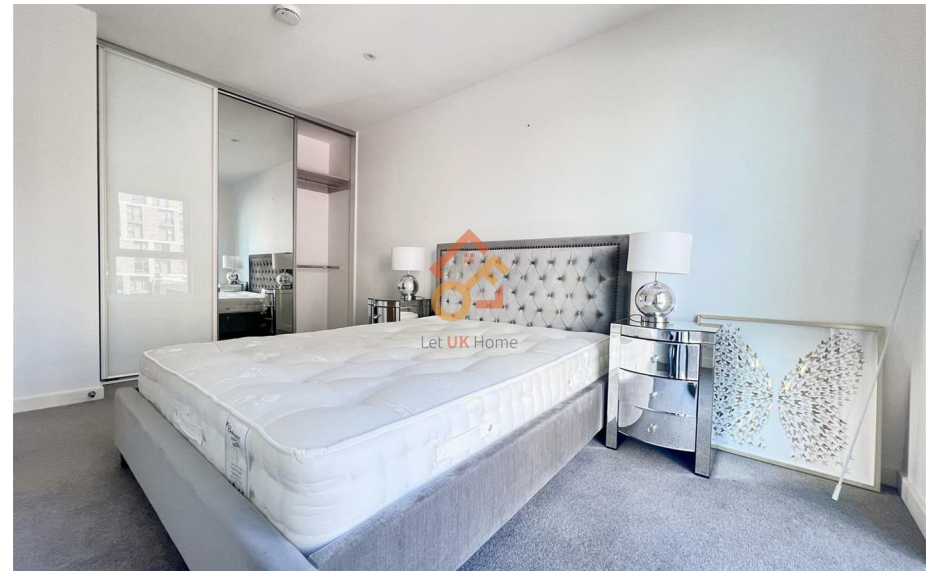
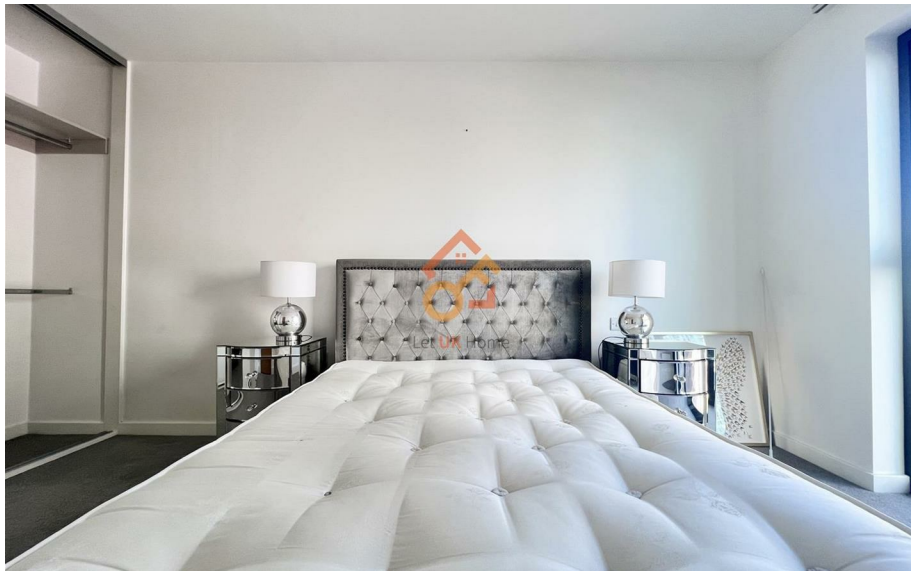
The development incorporates all of the functionality and high standards expected from city centre living. The Bull Ring Shopping Centre, Mailbox shopping center, Grand Central Station and the cities financial district are all within a few minutes stroll along with being close proximity to other local shops and amenities. There are convenience stores, restaurants, and large shopping areas such as Selfridges, House of Fraser, John Lewis, and supermarkets like M&S all around the development, meeting all your daily needs.

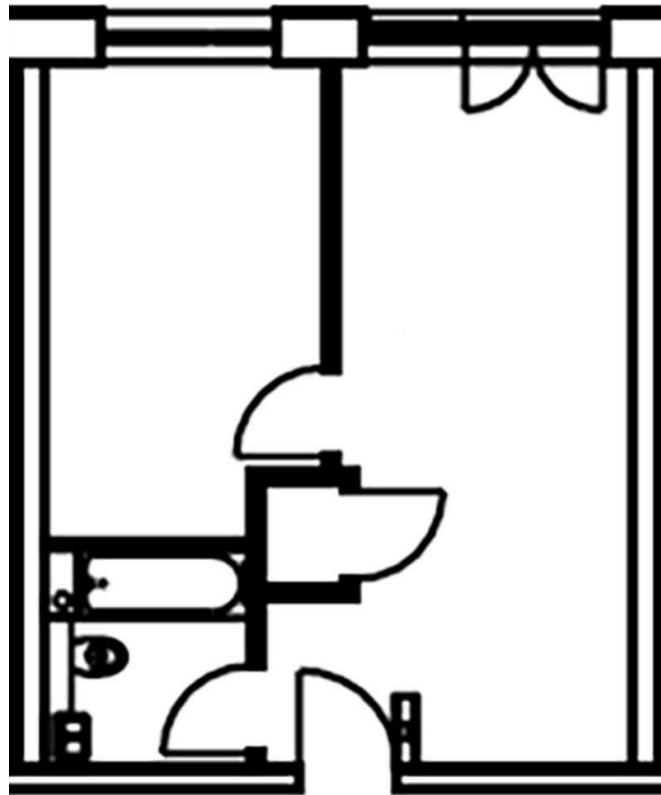
36 Windmill Street Birmingham

£1,150 Per Month



- 1st Floor
- 24h Security
- Close to Transport Links
- Communal Terrace
- Concierge Service
- Close to Local Shops
- CCTV
- EPC Rating: B





Total floor area 44 square metres



Let UK Home

Let UK Home

JQ Modern 120 Vyse St

Birmingham

B18 6NF

0121 828 8955

pmadmin@letukhome.co.uk

Council Tax Band: C

Local Authority:

Agents Note: Whilst every care has been taken to prepare these particulars, they are for guidance purposes only. All measurements are approximate and are for general guidance purposes only and whilst every care has been taken to ensure their accuracy, they should not be relied upon and potential buyers/tenants are advised to recheck the measurements.

Energy Efficiency Rating		Current	Potential
Very energy efficient - lower running costs			
(92 plus) A			
(81-91) B		85	85
(69-80) C			
(55-68) D			
(39-54) E			
(21-38) F			
(1-20) G			
Not energy efficient - higher running costs			
England & Wales		EU Directive 2002/91/EC	

<https://www.letukhome.co.uk/>