



Price

£240,000

Leasehold

2x  1x  1x 

Riverside Court, Lower
Southend Road,
Wickford, Essex, SS11

OVER 60?

Secure this property
for up to **59% less!**

 **DOUGLAS
ALLEN**
Helping you move forwards



Main features

- Immaculately presented ground floor apartment
- Refurbished with integrated appliances
- Ideal home for first time buyers
- Positioned favourably in the corner with outside area
- Allocated parking space

Accommodation

GROUND FLOOR

Hallway

Lounge/Kitchen/Dining Room: 24'7 x 10'9 (7.50m x 3.28m)

Bedroom 1: 10'11 x 8'7 (3.33m x 2.62m)

Bedroom 2: 13'0 x 6'1 (3.97m x 1.86m)

Bathroom

OUTSIDE

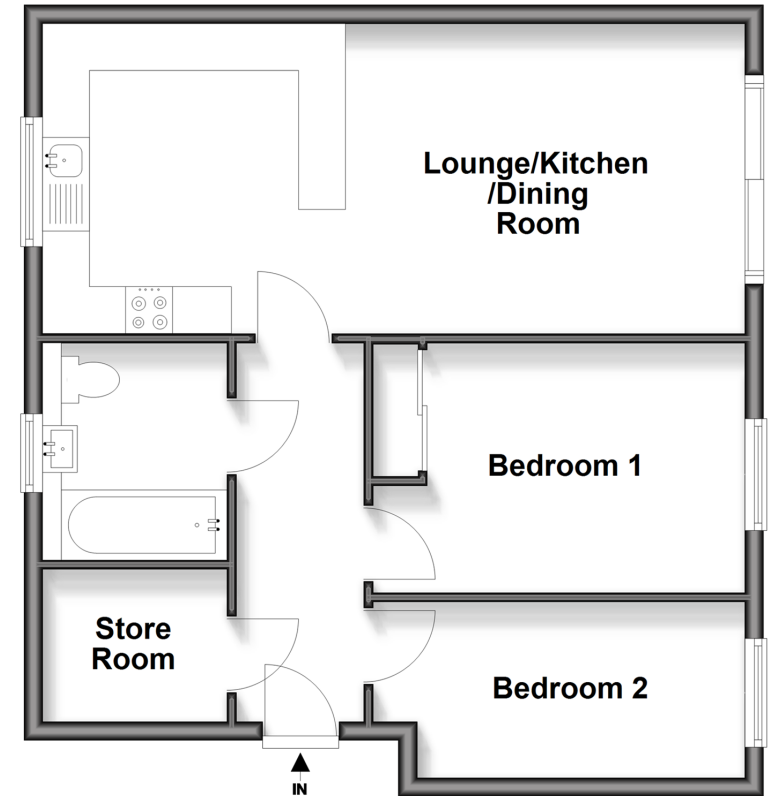
Private Patio Area

Allocated Parking

Communal Garden

Ground Floor

Approx. 57.9 sq. metres (622.8 sq. feet)



Call Wickford - 01268 561287 ■ douglasallen.co.uk

- Legal advice should be taken to verify fixtures/fittings, planning, alterations and/or lease details
- Appliances & services are untested, dimensions are approximate and floor plans are not to scale
- Through a Homewise Home For Life Plan people aged 60+ can secure this property for up to 59% less, by purchasing a Lifetime Lease



53413309/20260207/RP/BH