



Flat 3404, 67 Bondway, London, SW8 1GT  
**£911 Per Week**



## Flat 3404, 67 Bondway, London, SW8 1GT

**£911 Per Week**

A 2 bedroom apartment in Damac Tower, which represents the first collaboration between the world-renowned Versace Home and a residential property in London to bring the ultimate in branded living experience.

Finished to a high standard with a winter garden and views towards the River Thames this new apartment blends modern design, classical motifs and elegant craftsmanship with lavish interiors.

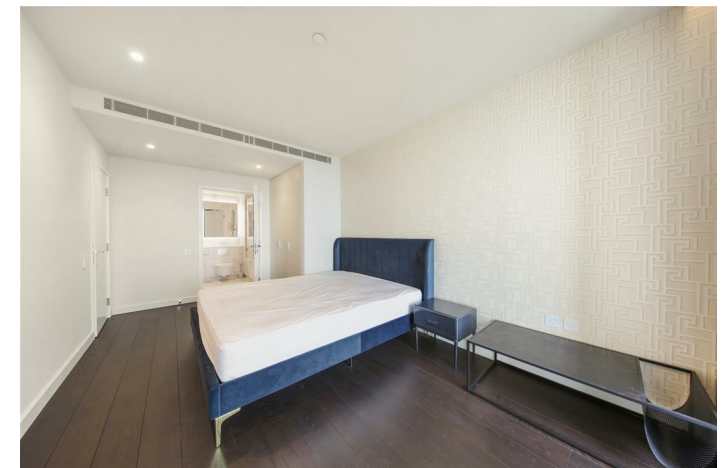
A range of luxury residents' facilities include concierge, gym, lounge, rooftop gardens, pool, spa, Jacuzzi, cinema and children's play area.

Located between Vauxhall and Battersea on the south bank of the River Thames in one of London's newest quarters and a short journey from London's most fashionable neighbourhoods

## Description

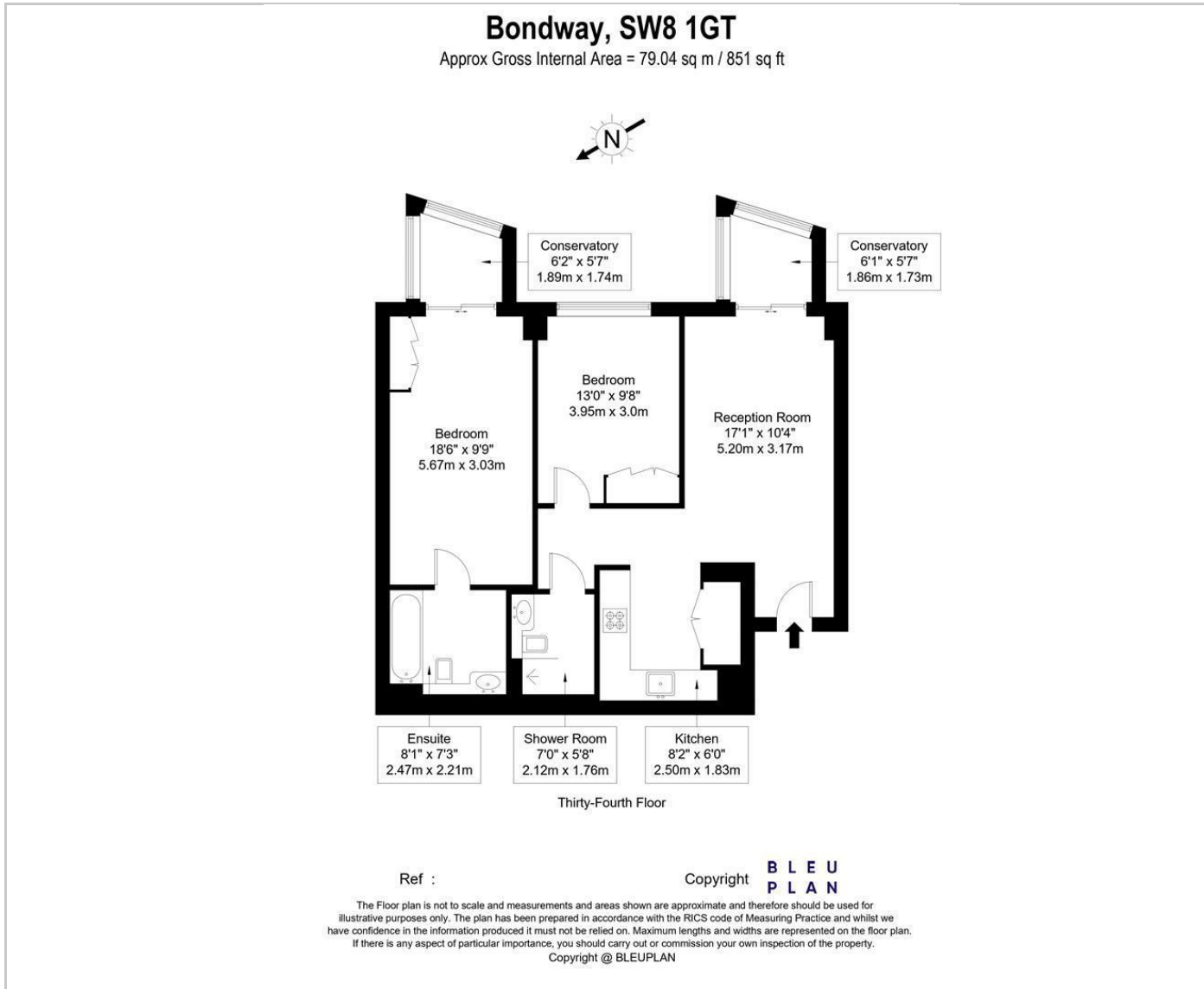


## Situation

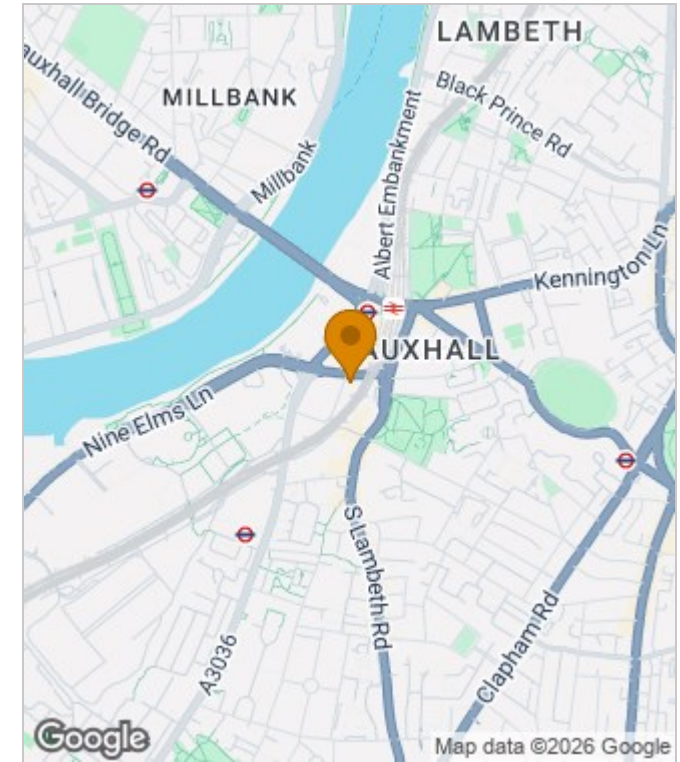


Furnished  
Council Tax Band: F  
Available: 14th January 2026

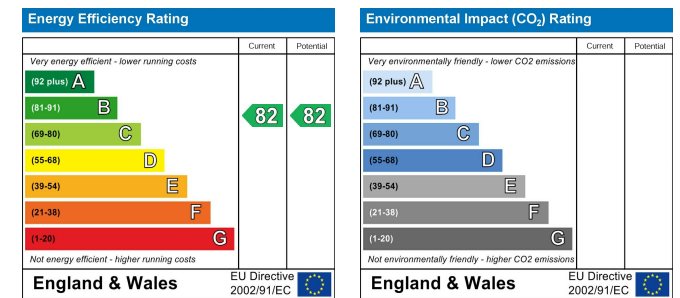
## Floor Plans



## Area Map



## Energy Performance Graph



These particulars, whilst believed to be accurate are set out as a general outline only for guidance and do not constitute any part of an offer or contract. Intending purchasers should not rely on them as statements of representation of fact, but must satisfy themselves by inspection or otherwise as to their accuracy. No person in this firm's employment has the authority to make or give any representation or warranty in respect of the property.