



## Grove Close, KT1

### £399,950

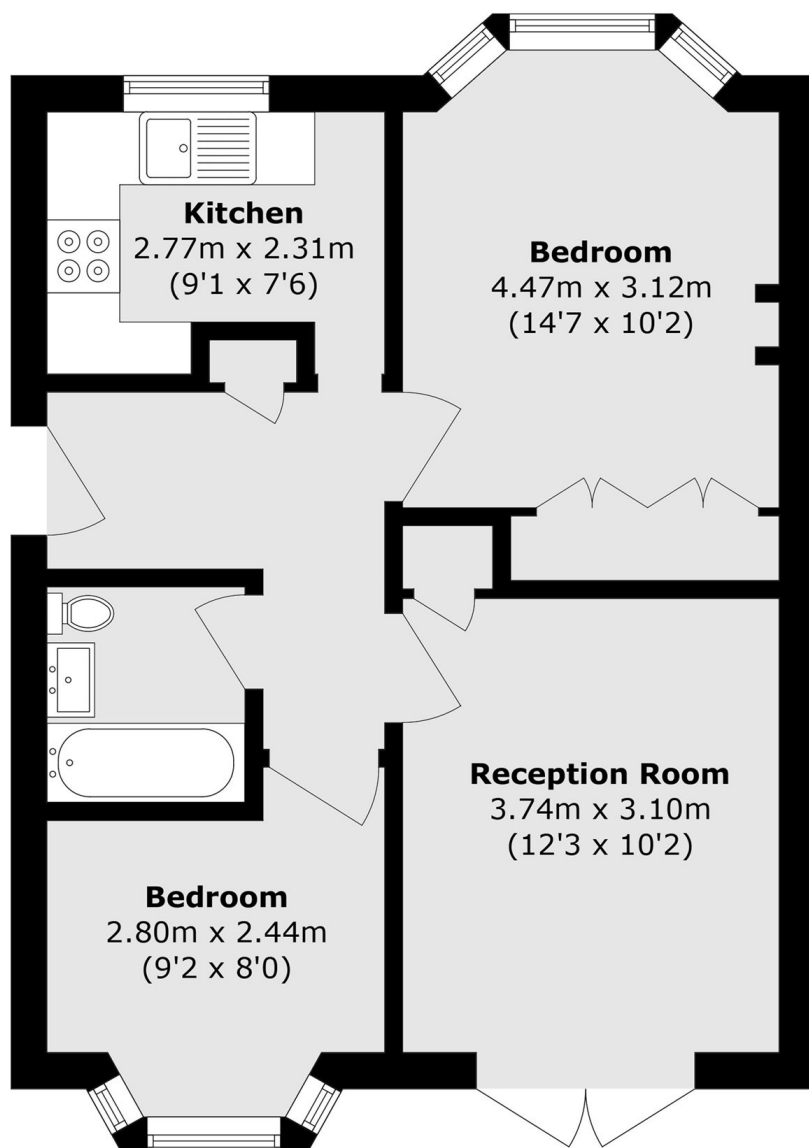
A charming two double bedroom, ground floor maisonette, quietly situated in a peaceful cul-de-sac within the highly sought after Grove area of Kingston. The property boasts a private entrance, a front garden and direct access to a spacious private rear garden. Inside, there is a smart, modern kitchen, while the home offers plenty of potential for the new owners to update and personalise to their tastes.

Grove Close is ideally situated just over half a mile from the vibrant Kingston town centre and the scenic River Thames. For commuters, Surbiton Station, offering a fast link into Central London, is less than a mile away.

### Features

- Ground Floor
- Private Rear Garden
- Two Double Bedrooms
- No Onward Chain
- New Lease
- Modern Kitchen

# Grove Close, Kingston Upon Thames, KT1



Total area (approx.): 48.4 sq. m (520.9 sq. ft)