



BREWHOUSE YARD, EC1V

£2,750 pcm

This magnificent one double bedroom exquisitely fully furnished apartment in the highly popular Horse Shoe Court development. The apartment briefly comprises entrance hall with access to the open plan integrated kitchen and dining room, alongside which is a fantastic private balcony.

- Available from 4th August
- One Bedroom Apartment
- Fully Furnished
- 3rd Floor with Lift Access
- Large Private Balcony
- Fantastic Clerkenwell Location



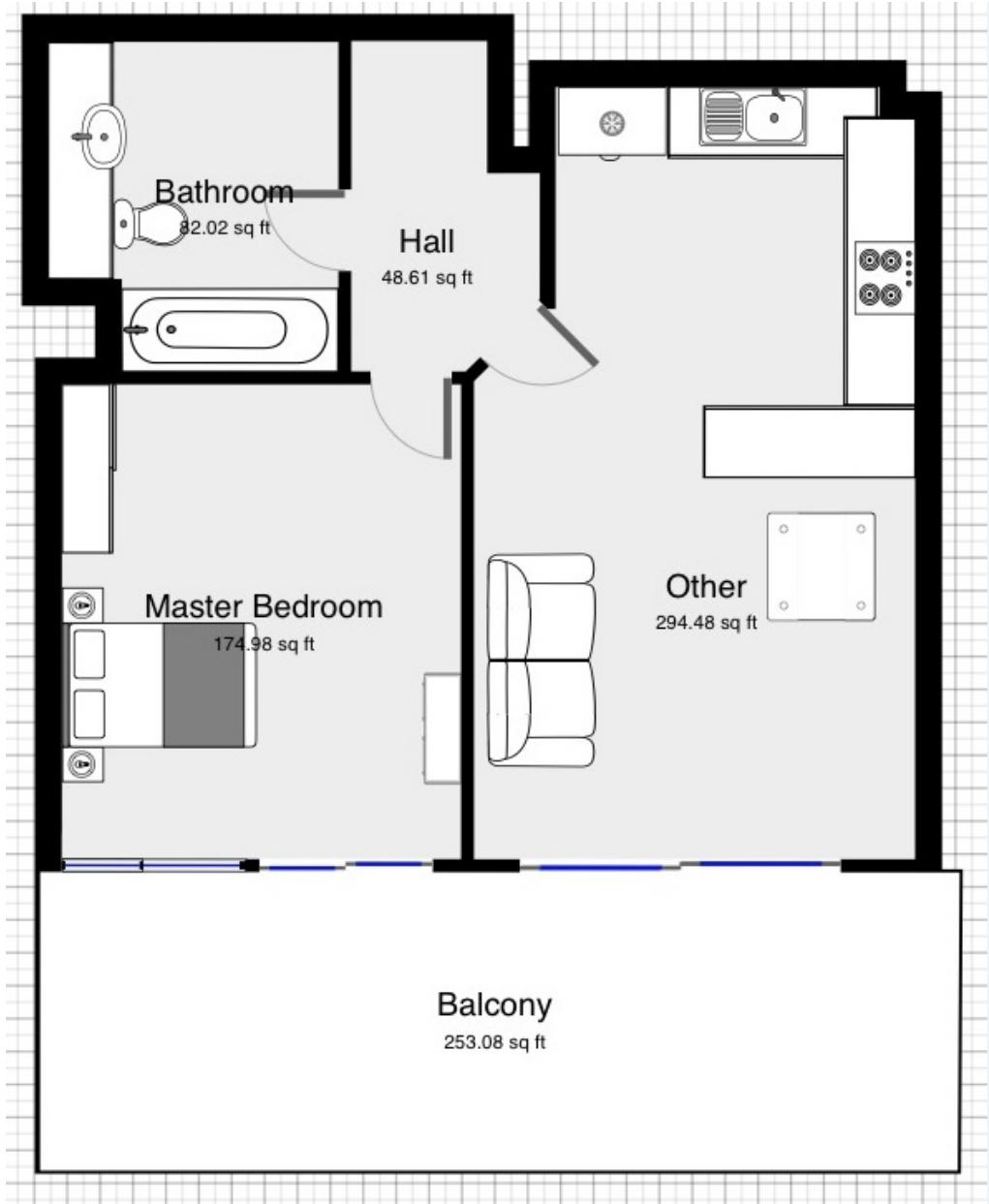
ABOUT THE HOME

This magnificent one double bedroom exquisitely fully furnished apartment in the highly popular Horse Shoe Court development. The apartment briefly comprises entrance hall with access to the open plan integrated kitchen and dining room, alongside which is a fantastic private balcony. The double bedroom is furnished with good sized wardrobe and drawers and the bathroom comprises an excellent 3-Piece Suite. Bewhouse Yard benefits from a 24 Hour Concierge.

Fantastic location which is quiet and peaceful, yet just around the corner from the attractions of the Barbican, Farringdon and Old Street and their relative stations. LIFE at Horse Shoe Court offers comfortable living in a trendy area with ideal access to The City for working professionals. Waitrose, Tesco and other local amenities based on site for added convenience. Don't miss out, get in







LiFE RESIDENTIAL

71 Drayton Park, London, N5

1BF

Sales: 020 3838 8666

Lettings: 020 7359 4488

Energy Rating: C. We aim to make our particulars both accurate and reliable. However they are not guaranteed; nor do they form part of an offer or contract. If you require clarification on any points then please contact us, especially if you're traveling some distance to view. Please note that appliances and heating systems have not been tested and therefore no warranties can be given as to their good working order.