



WESTWOODLEBER

WESTWOODLEBER
LET US GUIDE YOU HOME

Avenue Road, Hoddesdon, EN11 0BA
£730,000



Avenue Road, Hoddesdon, EN11 0BA

CHAIN FREE Westwood Leber are delighted to bring to the market this exceptional four bedroom detached family home located in this highly sought-after road in Dobbs Weir which provides fantastic lake views from the rear bedrooms. This excellent family home has been tastefully updated by the current owners and offers deceptively spacious and extremely versatile living accommodation throughout, which includes an open plan kitchen/breakfast room, large free flowing lounge/diner, ground floor gym, separate study, utility room, downstairs w/c and a large entrance hall. Further benefits include four double bedrooms, en-suite to master and three-piece bathroom suite. Externally there is a large and well landscaped rear garden, gated parking for several cars and a detached garage. We would highly recommend an internal viewing!

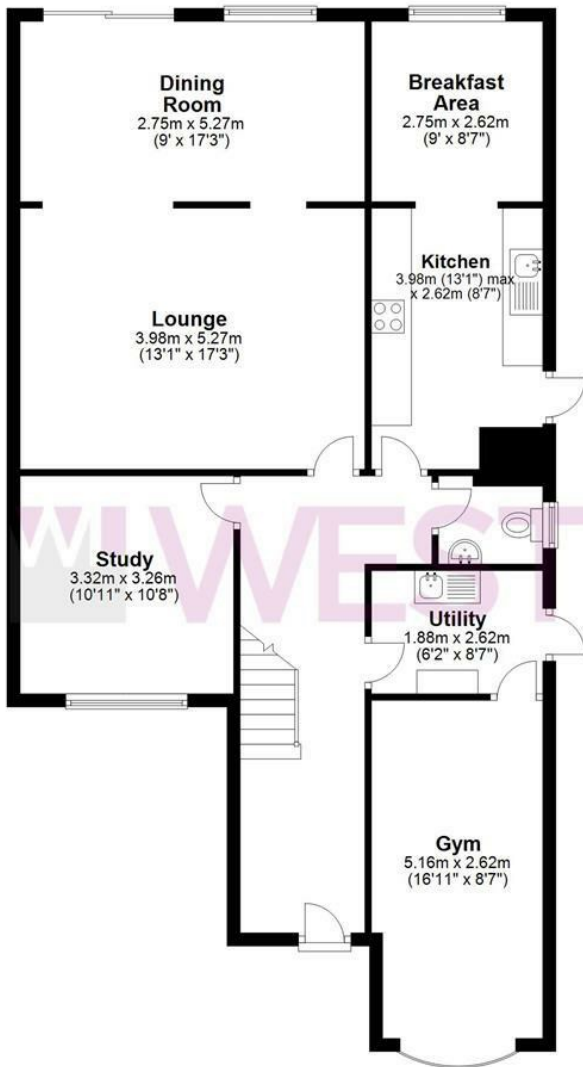


 WESTWOODLEBER

 WESTWOODLEBER
LET US GUIDE YOU HOME

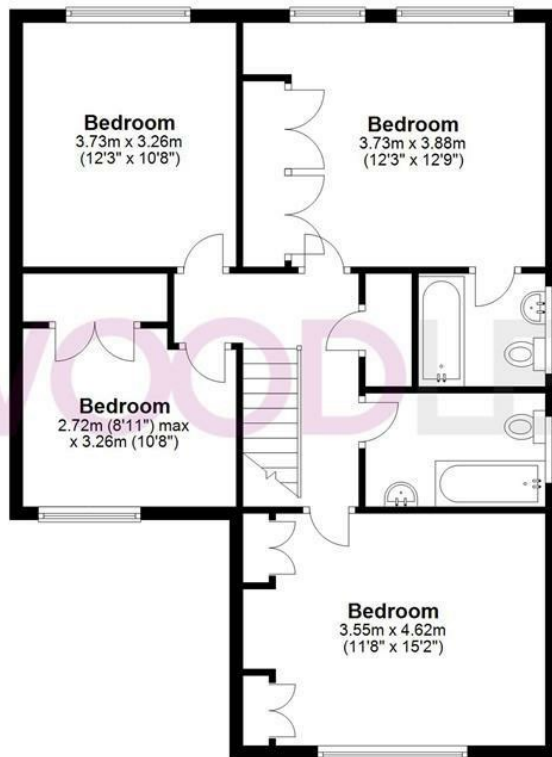
Ground Floor

Approx. 102.9 sq. metres (1107.1 sq. feet)



First Floor

Approx. 75.8 sq. metres (815.6 sq. feet)



Garage

Approx. 12.9 sq. metres (138.3 sq. feet)



Total area: approx. 191.5 sq. metres (2061.0 sq. feet)

FOR ILLUSTRATIVE PURPOSES ONLY. NOT TO SCALE. Whilst every attempt had been made to ensure the accuracy of the floor plan shown, all measurements, positioning, fixtures, features, fittings and any other data shown are an approximate interpretation for illustrative purposes only and are not to scale. No responsibility is taken for any error, omission, miss-statement or use of data shown.

Property marketing provided by www.fotomarketing.co.uk





WESTWOODLEBER



WESTWOODLEBER



WESTWOODLEBER



WESTWOODLEBER



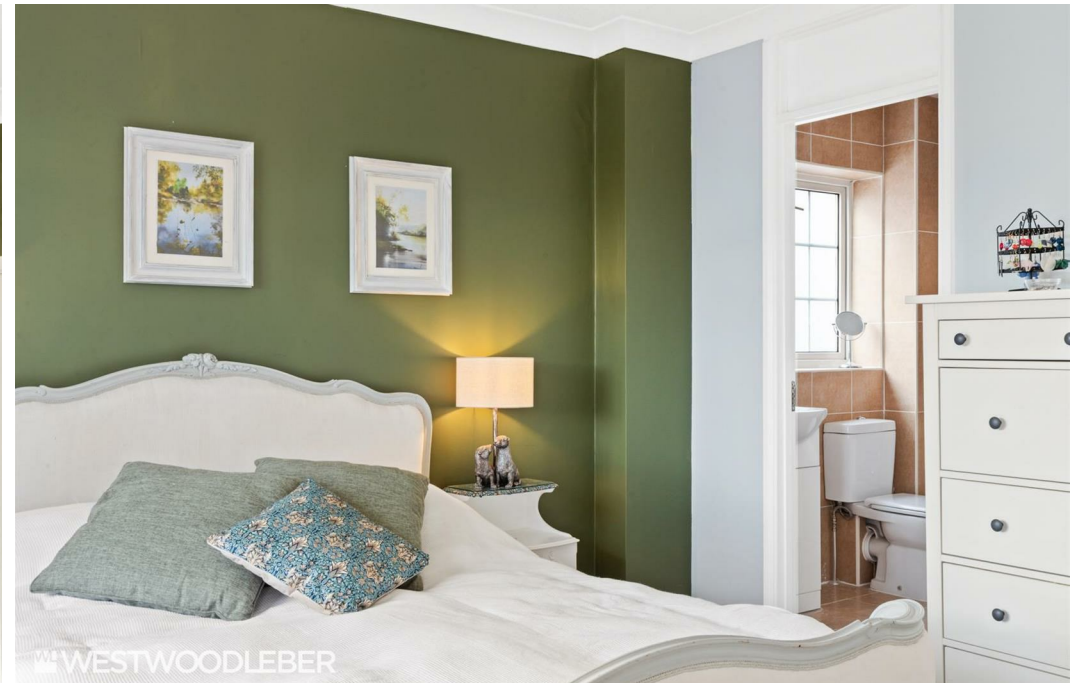
WESTWOODLEBER



WESTWOODLEBER



WESTWOODLEBER



WESTWOODLEBER









WESTWOODLEBER

WESTWOODLEBER
LET US GUIDE YOU HOME