

SNELLERS

ESTATE AGENTS



Blyth Close, TW1

£440,000

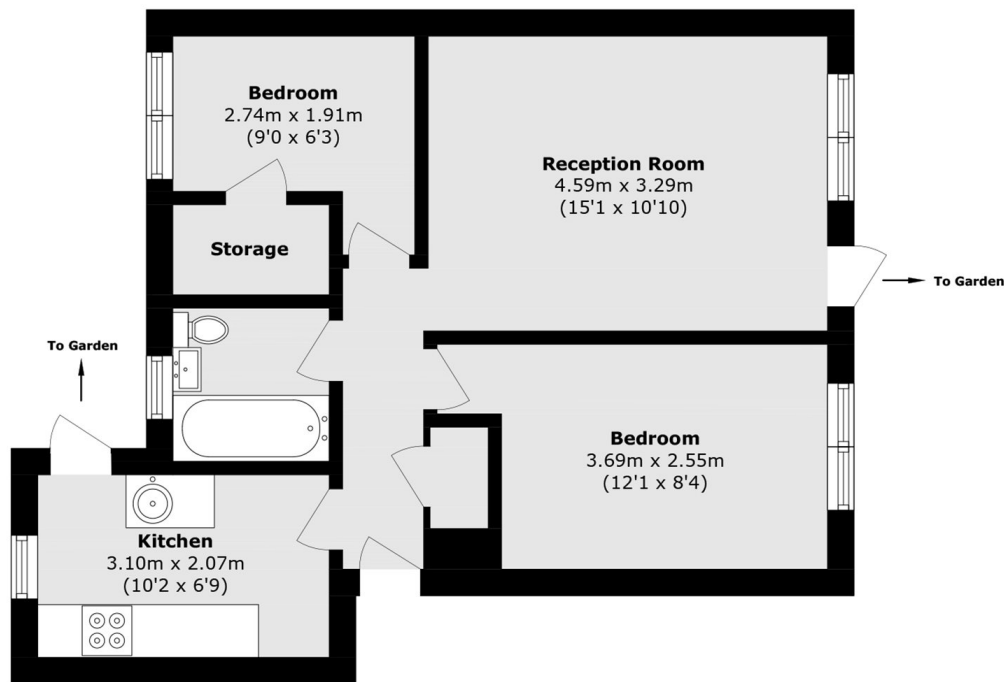
A beautifully presented ground floor maisonette, set in this private cul-de-sac of only eight flats. The property has two double bedrooms, a good size living room, modern kitchen with doors onto a rear garden, complete with a studio and a contemporary bathroom. Further benefits include private entrance, allocated parking and low service charges.

Blyth Close is a quiet cul-de-sac located off Grimwood Road, less than half a mile from Twickenham Station and within the catchment of some of the area's best schools.

- Quiet Cul-de-Sac • Ground Floor • Front & Rear Gardens •
- Off Street Parking • Two Double Bedrooms • Close to Amenities •

SNELLERS

ESTATE AGENTS



Total area (approx.): 49.6 sq. m (533.8 sq. ft)

Snellers Twickenham Sales
64-66 Heath Road
Twickenham
TW1 4BX
020 8892 5555
twickenhamsales@snellers.co.uk

Energy Rating: C We aim to make our particulars both accurate and reliable. However they are not guaranteed; nor do they form part of an offer or contract. If you require clarification on any points then please contact us, especially if you're traveling some distance to view. Please note that appliances and heating systems have not been tested and therefore no warranties can be given as to their good working order