



## Calthorpe Street, WC1X

£500,000

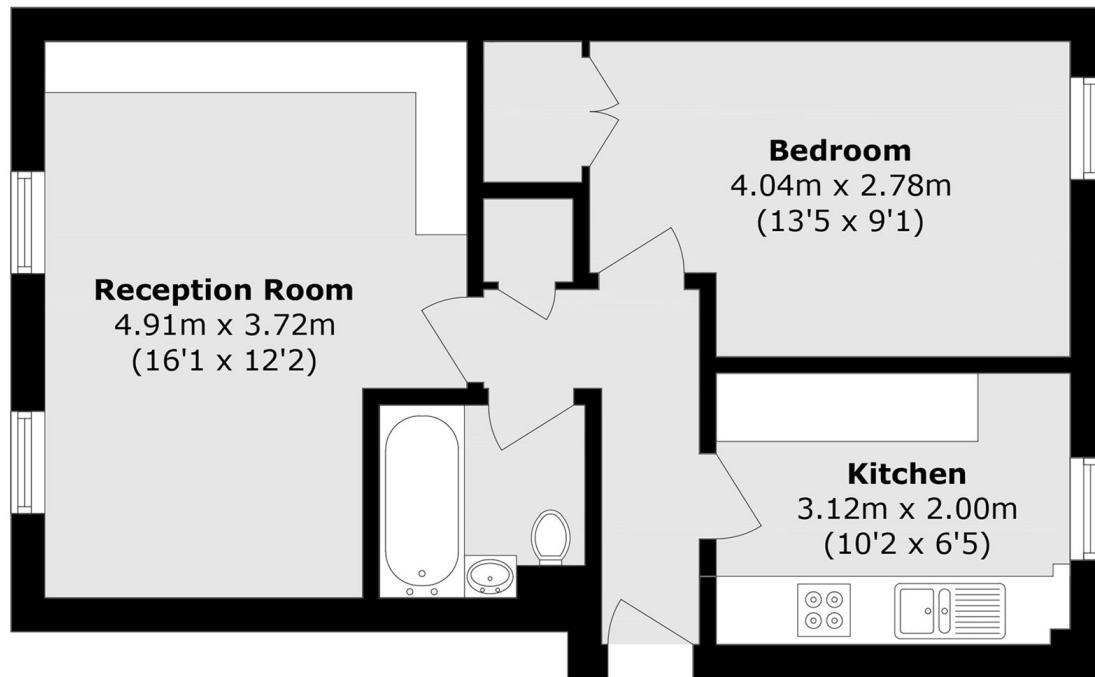
A beautifully appointed one double bedroom home with a separate kitchen, bright living room and communal roof terrace. The property is in excellent condition throughout and comes with a long lease and low service charge.

Located a short walk away from both Farringdon and Russell Square tube stations as well as the Brunswick Shopping Centre making the flat ideal for those who want to be centrally located with plenty of shops, bars, restaurants and transport on their doorstep.

### Features

- One Double Bedroom
- Large Roof Terrace
- Excellent Condition Throughout
- Low Service Charge
- Long Lease
- Separate Kitchen

# Calthorpe Street, London, WC1X



## Fourth floor

Total area (approx.): 46.0 sq. m (495.1 sq. ft)