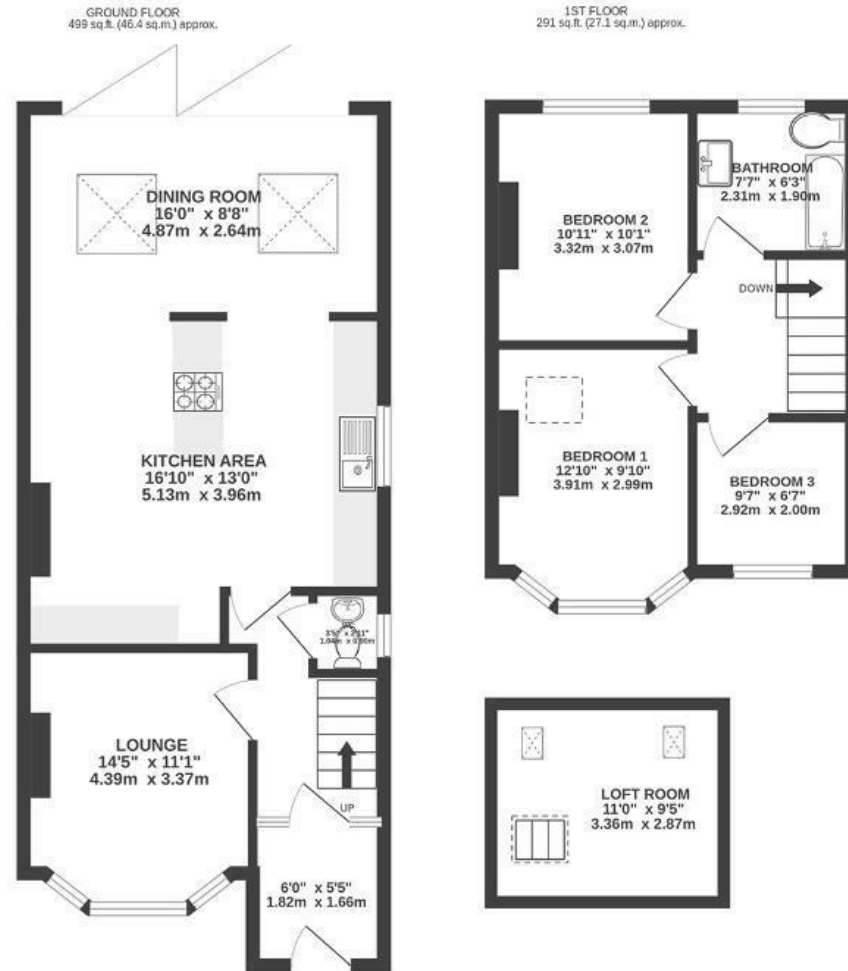


Grittleton Road

HORFIELD

APPROXIMATE FLOOR AREA (INCL. LOFT SPACE & EAVES)
95 SQM / 1022 SQFT



MEASUREMENTS ARE APPROXIMATE. NOT TO SCALE. ILLUSTRATIVE PURPOSES ONLY.

Boardwalk

Grittleton Road

HORFIELD, BRISTOL



£500,000



3 Bedrooms



BS7 0XB



1 Bathrooms

"We love this house, we'd stay forever except we are moving North. The garden is fabulous, great for playing with the kids in, as well as enjoying a drink on the patio once they are in bed! The big tree has also added much needed shade over the last few heatwaves. Our favourite room is the extension, it has a great view of the garden, and a few other interesting trees near by. We will miss watching the light on the trees change through the day and year."

