



SHERBROOKE WAY

Worcester Park, KT2



SPACIOUS FAMILY HOME IN WORCESTER PARK

A spacious detached family home with six bedrooms located within a popular modern development boasting a unique self-contained annex to the rear.



Local Authority: Sutton

Council Tax band: G

Tenure: Freehold

Guide Price: £1,500,000



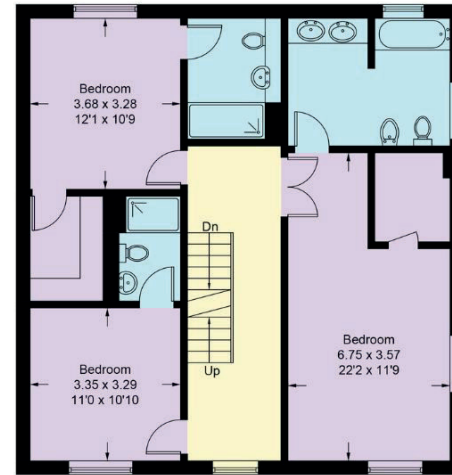
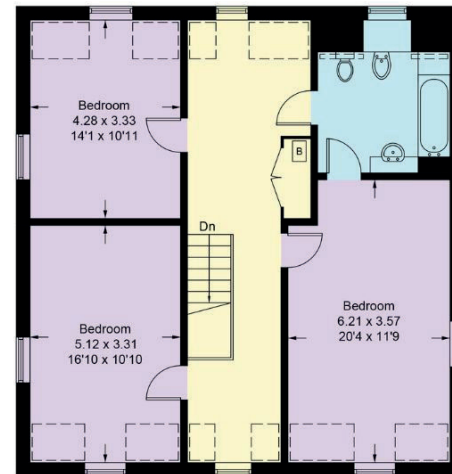
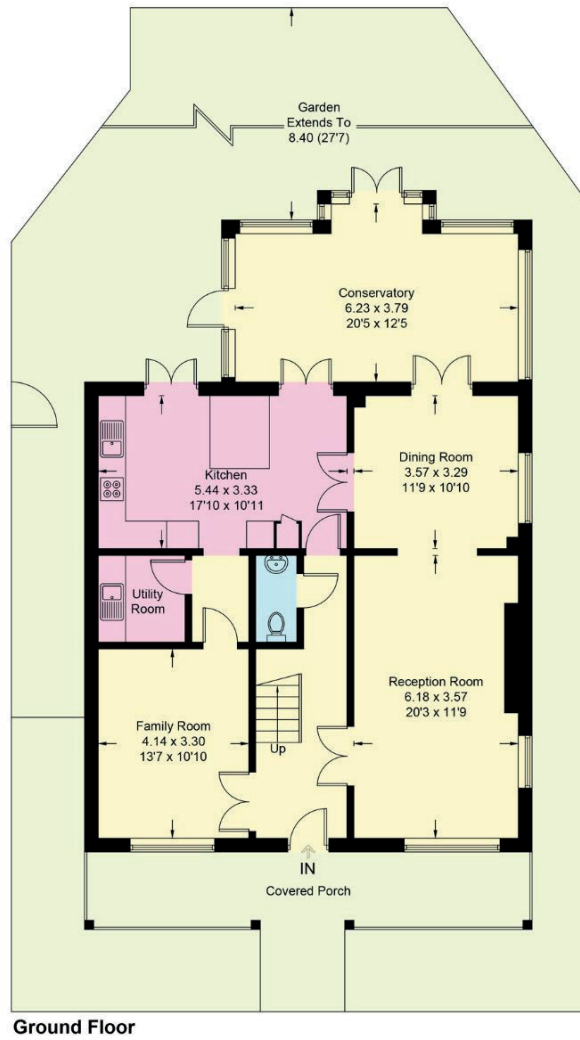
ABOUT THE PROPERTY

A spacious six-bedroom detached family home with four bathrooms featuring an open-plan kitchen, three reception rooms, and a brilliant conservatory, complemented by a private garden and its own garage leading to a distinct self-contained annex to the rear, all offered with no onward chain.

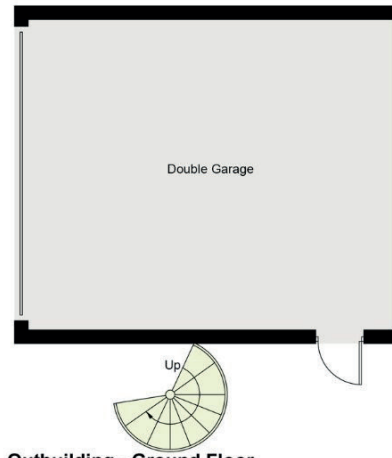
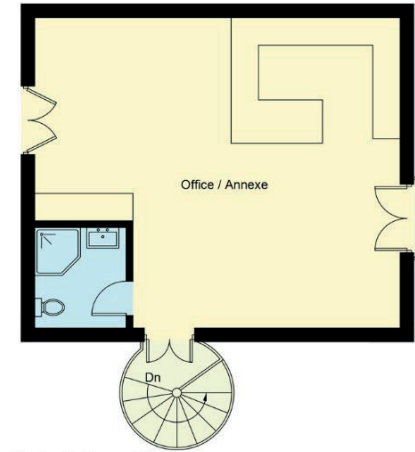
The Hamptons Estate was built by St James Homes and has thirty acres of parkland. Residents have access to tennis courts, water features, jogging trails and the gymnasium. Worcester Park station is within two thirds of a mile which makes the estate popular with families and commuters alike.







= Reduced headroom below 1.5m / 5'0



(Not Shown In Actual Location / Orientation)

Approximate Gross Internal Area (Excluding Outbuilding) = 282.3 sq m / 3039 sq ft
 Reduced Headroom = 9.3 sq m / 100 sq ft
 Total = 291.6 sq m / 3139 sq ft

This plan is for layout guidance only. Not drawn to scale unless stated. Windows and door openings are approximate. Whilst every care is taken in the preparation of this plan, please check all dimensions, shapes and compass bearings before making any decisions reliant upon them. (ID767266)

Ross Jordan

+44 20 3830 8634

ross.jordan@knightfrank.com

Knight Frank Wimbledon

58 High Street, London

SW19 5EE

knightfrank.co.uk

Your partners in property

1. Particulars: These particulars are not an offer or contract, nor part of one. You should not rely on statements given by Knight Frank in the particulars, by word of mouth or in writing ("information") as being factually accurate about the property, its condition or its value. Neither Knight Frank nor any joint agent has any authority to make any representations about the property, and accordingly any information given is entirely without responsibility on the part of Knight Frank. 2. Material Information: Please note that the material information is provided to Knight Frank by third parties and is provided here as a guide only. While Knight Frank has taken steps to verify this information, we advise you to confirm the details of any such material information prior to any offer being submitted. If we are informed of changes to this information by the seller or another third party, we will use reasonable endeavours to update this as soon as practical. 3. Photos, Videos etc: The photographs, property videos and virtual viewings etc. show only certain parts of the property as they appeared at the time they were taken. Areas, measurements and distances given are approximate only. 4. Regulations etc: Any reference to alterations to, or use of, any part of the property does not mean that any necessary planning, building regulations or other consent has been obtained. A buyer must find out by inspection or in other ways that these matters have been properly dealt with and that all information is correct. 5. Fixtures and fittings: A list of the fitted carpets, curtains, light fittings and other items fixed to the property which are included in the sale (or may be available by separate negotiation) will be provided by the Seller's Solicitors. 6. VAT: The VAT position relating to the property may change without notice. 7. To find out how we process Personal Data, please refer to our Group Privacy Statement and other notices at <https://www.knightfrank.com/legals/privacy-statement>.

Particulars dated June 2025. Photographs and videos dated June 2025. All information is correct at the time of going to print. Knight Frank is the trading name of Knight Frank LLP. Knight Frank LLP is a limited liability partnership registered in England and Wales with registered number OC305934. Our registered office is at 55 Baker Street, London W1U 8AN. We use the term 'partner' to refer to a member of Knight Frank LLP, or an employee or consultant. A list of members names of Knight Frank LLP may be inspected at our registered office. If you do not want us to contact you further about our services then please contact us by either calling 020 3544 0692, email to marketing.help@knightfrank.com or post to our UK Residential Marketing Manager at our registered office (above) providing your name and address.

 Knight
Frank

