



ANDOVER PLACE, NW6

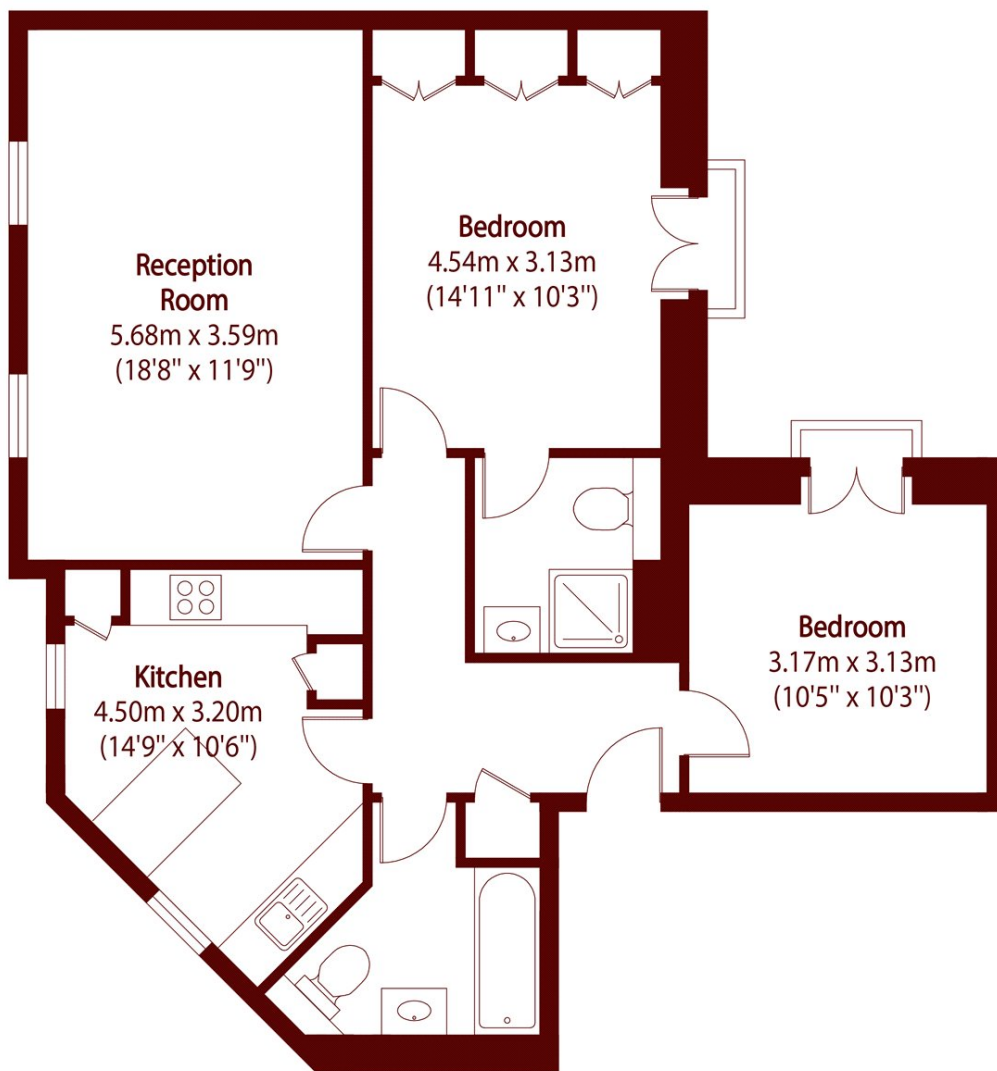
£650,000

A well presented two bedroom, two bathroom first floor apartment offering approximately 823 sq ft of bright, modern living space. The property features a generous reception room, a separate contemporary

Two bedrooms
Two bathrooms
Off street parking

Gated development
Approximately 823sq ft
Chain free

STEP INSIDE ANDOVER PLACE



Total area (approx): 76.44 sq m (823 sq. ft)

Little Venice
020 7993 3050

Energy Rating: We aim to make our particulars both accurate and reliable. However, they are not guaranteed; nor do they form part of an offer or contract. If you require clarification on any points then please contact us, especially if you're traveling some distance to view. Please note that appliances and heating systems have not been tested and therefore no warranties can be given as to their good working order

**MARSH &
PARSONS**